

# Stormwater Management Program

NPDES Permit #IDS028207



Michael Lenz, Director of Highways  
5629 E. Seltice Way  
Post Falls, Idaho 83854

(208) 765-3717

<https://www.postfallshd.com>

## Contents

ACRONYMS .....	2
DEFINITIONS.....	3
1 Basic SWMP Information .....	8
1.1 Staff Organization .....	8
1.2 Receiving Waters .....	8
1.3 SWMP Information and Statistics .....	8
1.4 Transfer of Ownership, Operational Authority, or Responsibility for SWMP Implementation..	10
2 Map of the Separate Storm Sewer System .....	11
3 Targeting of Pollutants of Concern .....	14
3.1 Monitoring/Assessment of MS4 Discharges to Impaired Waters .....	14
3.2 Pollutant Reduction Activities.....	14
4 Legal Authority and Enforcement .....	15
5 Storm Water Control Measures to Reduce Pollutants to the Maximum Extent Practicable .....	16
5.1 Construction Site Runoff Control.....	16
5.2 Storm Water Management for Areas of New Development and Redevelopment .....	19
5.3 Pollution Prevention/Good Housekeeping for MS4 Operations .....	21
5.4 Illicit Discharge Detection and Elimination .....	23
5.5 Education, Outreach, and Public Involvement .....	27
6 Unique Provisions Specific to Lakes, Post Falls, and East Side Highway Districts.....	29
6.1 Annual Compliance Evaluation .....	29
6.2 Alternative Control Measure Requests.....	29
6.3 Adaptive Management Actions .....	29

## ACRONYMS

---

<b>AHDS</b>	Associated Highway District Standards
<b>BMP</b>	Best Management Practice
<b>CFR</b>	Code of Federal Regulations
<b>CGP</b>	Construction General Permit
<b>CWA</b>	Clean Water Act
<b>EPA</b>	Environmental Protection Agency
<b>ERP</b>	Enforcement Response Policy
<b>ESHD</b>	East Side Highway District
<b>GIS</b>	Geographic Information System
<b>IDDE</b>	Illicit Discharge Detection & Elimination
<b>IDEQ</b>	Idaho Department of Environmental Quality
<b>LHD</b>	Lakes Highway District
<b>µg/L</b>	Micrograms per Liter
<b>mg/L</b>	Milligrams per Liter
<b>MEP</b>	Maximum Extent Practicable
<b>MS4</b>	Municipal Separate Storm Sewer System
<b>NPDES</b>	National Pollutant Discharge Elimination System
<b>O&amp;M</b>	Operations & Maintenance
<b>ORI</b>	Outfall Reconnaissance Inventory
<b>PCB</b>	Polychlorinated Biphenyls
<b>PDF</b>	Portable Document Format
<b>PFHD</b>	Post Falls Highway District
<b>SEEP</b>	Stormwater & Erosion Education Program
<b>SWMP</b>	Storm Water Management Program
<b>TMDL</b>	Total Maximum Daily Load
<b>US</b>	United States
<b>USACE</b>	United States Army Corps of Engineers
<b>WLA</b>	Wasteload Allocations
<b>WOTUS</b>	Waters of the United States
<b>WQS</b>	Water Quality Standards

## DEFINITIONS

---

**Best Management Practice (BMP):** Schedules of activities, prohibition of practices, maintenance procedures, and other management practices to prevent or reduce the pollution of waters of the United States. BMPs also mean treatment requirements operating procedures, and practices to control, runoff, spillage, or leaks, sludge, or waste disposal, or drainage from raw material storages. See 40 CFR 122.2 and 122.44(k). For the purposes of the NPDES Permit, BMP broadly refers to any type of structural or non-structural practice or activity undertaken by the Permittee in the course of implementing its SWMP.

**Code of Federal Regulations (CFR):** The official annual compilation of all regulations and rules promulgated during the previous year by the agencies of the United States government, combined with all the previously issued regulations and rules of those agencies that are still in effect.

**Construction General Permit (CGP):** The current available version of EPA's NPDES General Permit for Stormwater Discharges for Construction Activities in Idaho, Permit No. IDR12-0000. EPA's CGP is posted on EPA's website at [www.epa.gov/npdes/stormwater/gcp](http://www.epa.gov/npdes/stormwater/gcp).

**Construction Activity:** Includes, but is not limited to, clearing, grading, excavation, and other site preparation work related to the construction of residential buildings and non-residential buildings, and heavy construction (e.g., highways, streets, bridges, tunnels, pipelines, transmission lines, and industrial non-building structures).

**Coeur d'Alene Urbanized Area (NPDES Permit Area):** Defined by the decennial census data from Year 2000 and Year 2010. An urbanized area is the densely settled core of census tracts and/or census blocks that have a population of at least 50,000, along with adjacent territory containing non-residential urban land uses as well as territory with low population density included to link outlying densely settled territory with the densely settled core. It is a calculation used by the Bureau of Census to determine the geographic boundaries of the most heavily developed and dense urban areas. Once a small MS4 is designated into the program based on the UA boundaries, it cannot be waived from the program if in subsequent UA calculation the small MS4 is no longer with the UA boundaries. The following websites are for the Census 2000 and Census 2010 UA maps, respectively:

[http://www2.census.gov/geo/maps/urbanarea/uaoutline/UA2000/ua18451/ua18451\\_01.pdf](http://www2.census.gov/geo/maps/urbanarea/uaoutline/UA2000/ua18451/ua18451_01.pdf)  
[http://www2.census.gov/geo/maps/dc10map/UAUC\\_RefMap/ua/ua18451\\_coeur\\_dalene\\_id/](http://www2.census.gov/geo/maps/dc10map/UAUC_RefMap/ua/ua18451_coeur_dalene_id/)

**Clean Water Act (CWA):** (formerly referred to as the Federal Water Pollution Control Act or Federal Water Pollution Control Act Amendments of 1972) Public Law 92-500, as amended by Public Law 95-217, Public Law 95-576, Public Law 96-483, and Public Law 97-117, 33 U.S.C. § 1251 et seq. [40 CFR §122.2].

**Discharge of a Pollutant:** any addition of any "pollutant" or combination of pollutants to "waters of the United States" from any "point source," or any addition of any pollutant or combination of pollutants to the waters of the "contiguous zone" or the ocean from any point source other than a vessel or other floating craft which is being used as a means of transportation. This definition includes additions of pollutants into waters of the United States from: surface runoff which is collected or channeled by man; discharges through pipes, sewers, or other conveyances owned by a State, municipality, or other person which do not lead to a treatment works; and discharges through pipes, sewers, or other conveyances, leading into privately owned treatment works. This term does not include an addition of pollutants by any "indirect discharger" [40 CFR §122.2].

**Erosion:** The process of carrying away soil particles by the action of water.

**Hazardous Materials:** Defined at IDAPA 58.01.02.010.47 and means a material or combination of materials which, when discharged in any quantity into state waters, presents a substantial present or potential hazard to human health, the public health, or the environment. Unless otherwise specified, published guides such as Quality Criteria for Water (1976) by EPA, Water Quality Criteria (Second Edition, 1963) by the state of California Water Quality Control Board, their subsequent revisions, and more recent research papers, regulations and guidelines will be used in identifying individual and specific materials and in evaluating the tolerances of the identified materials for the beneficial uses indicated.

**Impaired Waters:** Any water body that does not meet applicable water quality standards for one or more beneficial uses by one or more pollutants. For the purposes of this Permit, impaired water includes any water body that IDEQ includes in its 2014 Integrated Report, as a “Category 4a” water of the state for which a total maximum daily load has been completed and approved; as a “Category 4b” water of the state that have pollution control requirements in place other than a TMDL and are expected to meet standards; and/or as a “Category 5” water of the state where a TMDL is necessary. The term impaired water also includes any interstate surface water body that originates in Idaho and flows into Washington that the Washington Department of Ecology categorizes as Category 4a, 4b, or 5 in its latest Water Quality Assessment 305(b) Report and 303(d) List as approved by EPA on July 22, 2016.

**Illicit Connections:** Include, but are not limited to, pipes, drains, open channels, or other conveyances that have the potential to allow an illicit discharge to enter the MS4.

**Illicit Discharge:** Any discharge to a municipal storm sewer that is not composed entirely of stormwater except discharges pursuant to a NPDES permit (other than the NPDES permit for discharges from the municipal separate storm sewer) and discharges from firefighting activities. See 40 CFR 122.26(b)(2).

**Interconnection:** The point (excluding sheet flow over impervious surfaces) where the Permittee’s MS4 discharges to another MS4 or other storm sewer system, through which the discharge is eventually conveyed to a water of the United States. Interconnections shall be treated similarly to outfalls throughout the Permit.

**MS4 (Municipal Separate Storm Sewer System):** Is used in the NPDES Permit to refer to ‘Small Municipal Separate Storm Sewer System’ as defined in 40 CFR 122.26(b)(16). The term, as used in the context of the NPDES Permit, refers to those portions of the municipal separate storm sewer systems owned and/or operated by the entities named herein. See also Municipal Separate Storm Sewer and Small MS4.

**Municipality:** A city, town, borough, county, parish, district, association, or other public body created by or under State law and having jurisdiction over disposal of sewage, industrial wastes, or other wastes, or an Indian tribe or an authorized Indian tribal organization, or a designated and approved management agency under Section 208 of the CWA.

**Municipal Separate Storm Sewer:** Defined in 40 CFR §122.26(b)(8) and means a conveyance or system of conveyances (including roads with drainage systems, municipal streets, catch basins, curbs, gutters, ditches, man-made channels, or storm drains): (i) Owned or operated by a State, city, town, borough, county, parish, district, association, or other public body (created by or pursuant to State law) having jurisdiction over disposal of sewage, industrial wastes, stormwater, or other wastes, including special districts under State law such as a sewer district, flood control district or drainage district, or similar entity, or an Indian tribe or an authorized Indian tribal organization, or a designated and approved management agency under Section 208 of the CWA that discharges to waters of the United States; (ii)

Designed or used for collecting or conveying stormwater; (iii) Which is not a combined sewer; and (iv) Which is not part of a Publicly Owned Treatment Works (POTW) as defined at 40 CFR §122.2.

**National Pollutant Discharge Elimination System (NPDES):** The national program for issuing, modifying, revoking and reissuing, terminating, monitoring and enforcing permits, and imposing and enforcing pretreatment requirements, under sections 307, 402, 318, and 405 of CWA [40 CFR §122.2].

**Outfall:** Defined at 40 CFR §122.26(b)(9) means a point source (see definition below) at the point where a municipal separate storm sewer discharges to waters of the United States and does not include open conveyances connecting two municipal separate storm sewers or pipes, tunnels, or other conveyances which connect segments of the same stream or other waters of the United States and are used to convey waters of the United States.

**Permanent Stormwater Controls, or Practices, Permanent Controls, and/or Post-Construction Stormwater Management Controls:** Structural and non-structural controls that are designed to treat or control pollutants in stormwater runoff on a permanent basis.

**Permit:** For the purposes of this document, means North Idaho Highway Districts MS4 NPDES Permit.

**Pollutant:** Dredged spoil, solid waste, incinerator residue, filter backwash, sewage, garbage, sewage sludge, munitions, chemical wastes, biological materials, radioactive materials [except those regulated under the Atomic Energy Act of 1954, as amended (42 U.S.C. § 2011 et seq.)], heat, wrecked or discarded equipment, rock, sand, cellar dirt and industrial, municipal, and agricultural waste discharged into water [40 CFR §122.2].

**Pollutant(s) of Concern:** For the purposes of the NPDES Permit, any pollutant identified by IDEQ or WDOE as a cause of impairment of any water body that receives MS4 discharges authorized under the NPDES Permit. See also “impaired water.”

**Post-Construction Stormwater Management Controls or “Permanent Stormwater Controls”:** Controls designed to treat or control runoff on a permanent basis once construction is complete.

**Redevelopment:** For the purposes of the NPDES Permit, the alteration, renewal or restoration of any developed land or property that results in land disturbance of one acre or more, or less than one acre that is part of a common plan of development of sale that exceeds one acre, and that has one of the following characteristics: land that currently has an existing structure, such as buildings or houses; or land that is currently covered with an impervious surface, such as a parking lot or roof; or land that is currently degraded and is covered with sand, gravel, stones, or other non-vegetative covering.

**Storm Event:** For the purposes of the NPDES Permit, means a precipitation event that results in an actual discharge from the outfall, and which follows the preceding measurable storm event by at least 48 hours (2 days).

**Stormwater and Storm Water Runoff:** As used in the NPDES Permit, means stormwater runoff, snow melt runoff, and surface runoff and drainage, and is defined at 40 CFR §122.26(b)(13). “Stormwater” means that portion of precipitation that does not naturally percolate into the ground or evaporate, but flows via overland flow, interflow, channels, or pipes into a defined surface water channel or a constructed infiltration facility.

**Stormwater Control Measure or Stormwater Management Program Control Measure:** The physical, structural, and/or managerial measures that, when used singly or in combination, reduce the  
Post Falls Highway District Stormwater Management Program 2021

downstream quality and quantity impacts of storm water runoff. Also, stormwater control measures means a permit term or condition used to prevent or control the discharge of pollutants. This may include a schedule of activities, prohibition of practices, maintenance procedures, or other management practices. Stormwater control measures may include, but are not limited to, treatment requirements; operating procedures; practices to control plant site runoff, spillage, leaks, sludge, or waste disposal; or drainage from raw material storage. See best management practices (BMPs). Minimum stormwater control measures are defined 40 CFR §122.34(b).

**Stormwater Management Practice or Stormwater Management Control:** Practices that manage stormwater, including structural and vegetative components of a storm water system.

**Stormwater Management Program (SWMP):** A comprehensive program to manage the quality of storm water discharged from the municipal separate storm sewer system. For the purposes of the NPDES Permit, the SWMP consists of the actions and activities conducted by the Permittees as required by the NPDES Permit and described in the Permittees' SWMP Document. A "SWMP Document" is the written summary describing the unique and/or cooperative means by which an individual Permittee or entity implements the specific stormwater management control measures required by the NPDES Permit within their jurisdiction.

**Small Municipal Separate Storm Sewer System or Small MS4:** Defined at 40 CFR 122.26(b)(16) and (17), respectively, and means all separate storm sewers that are: (i) owned or operated by the United States, a State, city, town, borough, county, parish, district, association, or other public body (created by or pursuant to State law) having jurisdiction over disposal of sewage, industrial wastes, stormwater, or other wastes, including special districts under State law such as a sewer district, flood control district or drainage district, or similar entity, or an Indian tribe or an authorized Indian tribal organization, or a designated and approved management agency under section 208 of the CWA that discharges to waters of the United States; (ii) not defined as "large" or "medium" municipal separate storm sewer systems pursuant to 40 CFR 122.26(b)(4) and (b)(7), or designated under paragraph 40 CFR 122.26(a)(1)(v); and (iii) includes systems similar to separate storm sewer systems in municipalities, such as systems at military bases, large hospital or prison complexes, and highways and other thoroughfares. The term does not include separate storm sewers in very discrete areas, such as individual buildings.

**Total Maximum Daily Load (TMDL):** the sum of the individual wasteload allocations for point sources, load allocations (LAs) for non-point sources, and natural background. Such load shall be established at a level necessary to implement the applicable water quality standards with seasonal variations and a margin of safety which takes into account any lack of knowledge concerning the relationship between effluent limitations and water quality [IDAPA 58.012.02.010.100].

**Toxic Substance:** Defined at IDAPA 58.01.02.010.102, and means any substance, material or disease-causing agent, or a combination thereof, which after discharge to waters of the State and upon exposure, ingestion, inhalation or assimilation into any organism (including humans), either directly from the environment or indirectly by ingestion through food chains, will cause death, disease, behavioral abnormalities, malignancy, genetic mutation, physiological abnormalities (including malfunctions in reproduction) or physical deformations in affected organisms or their offspring. Toxic substances include, but are not limited to, the one hundred twenty-six (126) priority pollutants identified by the EPA pursuant to Section 307(a) of the federal Clean Water Act.

**Treatment:** The reduction and removal of pollutants from stormwater.

**Uncontaminated:** For the purposes of the NPDES Permit, means that the MS4 discharge does not:  
Post Falls Highway District Stormwater Management Program 2021

- result in the discharge of a reportable quantity for which notification is or was required pursuant to 40 CFR 117.21 or 40 CFR 302.6 at any time since November 16, 1987; or
- result in the discharge of a reportable quantity for which notification is or was required pursuant to 40 CFR 110.6 at any time since November 16, 1987; or
- contribute to a violation or exceedance of an applicable Idaho Water Quality Standard.

**Waters of the United States or Waters of the U.S.:**

- (a) All waters which are currently used, were used in the past, or may be susceptible to use in interstate or foreign commerce, including all waters which are subject to the ebb and flow of the tide;
- (b) All interstate waters, including interstate “wetlands;”
- (c) All other waters such as intrastate lakes, rivers, streams (including intermittent streams), mudflats, sandflats, “wetlands,” sloughs, prairie potholes, wet meadows, playa lakes, or natural ponds the use, degradation, or destruction of which would affect or could affect interstate or foreign commerce including any such waters:
  - (1) Which are or could be used by interstate or foreign travelers for recreational or other purposes;
  - (2) From which fish or shellfish are or could be taken and sold in interstate or foreign commerce; or
  - (3) Which are used or could be used for industrial purposes by industries in interstate commerce;
- (d) All impoundments of water otherwise defined as waters of the United States under this definition;
- (e) Tributaries of waters identified in paragraphs (a) through (d) of this definition;
- (f) The territorial sea; and
- (g) “Wetlands” adjacent to waters (other than waters that are themselves wetlands) identified in paragraphs (a) through (f) of this definition [40 CFR §122.2].



## **1. Basic SWMP Information**

# 1 BASIC SWMP INFORMATION

---

This Storm Water Management Program (SWMP) Document was developed by Ruen-Yeager & Associates, Inc. on behalf of the Lakes, Post Falls, and East Side Highway Districts (North Idaho Highway Districts) to describe the activities and control measures conducted to meet the terms and conditions of NPDES Permit # IDS028207.

## 1.1 Staff Organization

This document contains information pertaining to a joint Storm Water Management Program for the Post Falls Highway District. The personnel responsible for implementing the SWMP are the respective Highway District Director of Highways. Post Falls Highway District Director of Highways is Michael Lenz.

The Associated Highway Districts of Kootenai County consist of the East Side, Lakes, Post Falls, and Worley Highway Districts. The East Side, Lakes, and Post Falls Highway District are included in this SWMP and are permitted for MS4 discharges under NPDES Permit #IDS028207. Each Highway District operates independent of the other and has established mapped boundaries, with individual elected Board of Commissioners.

This SWMP was developed under agreement between the participating Associated Highway Districts of Kootenai County to be adopted as a management program tool to provide guidance and track progress of respective Highway District MS4s under the joint NPDES permit.

## 1.2 Receiving Waters

The waterbodies identified in Table 1 receive storm water discharges from the Post Falls Highway District MS4.

*Table 1 Post Falls Highway District Receiving Water Summary*

Receiving Waterbody Segments	WQS Classification	Impairment/Pollutant of Concern	TMDLs? (Yes/No)	Applicable WLAs (Yes/No)	No. of Discharging Outfalls
Spokane River		Cadmium; Lead; Total Phosphorus; Zinc	No	No	15

## 1.3 SWMP Information and Statistics

Post Falls Highway District will track the following information to set priorities and assess permit compliance:

**Public Education and Outreach** – Events performed in respect to Public Education and Outreach will be documented. Any questionnaires administered during outreach will be recorded and analyzed for effectiveness.

**Illicit Discharge Detection and Elimination** – Post Falls Highway District is always monitoring for illicit discharges in its district as they make daily travel through the District.

- MS4 Maps and Outfall Inventory have been developed and refined for Post Falls Highway District to more accurately depict point source discharges to Post Falls Highway District MS4 jurisdiction.
- Dry Weather Outfall Screening – All outfalls were observed during July through September dry season and any outfalls with flows were tested for pH; total chlorine; surfactants; total phenols; E. coli; total phosphorus; turbidity; temperature and suspended solids. Test results will be documented and will provide a baseline for future identification or investigation of recurring illicit discharges.
- Annual training is documented and performed for the staff of each Highway District to identify and respond to illicit discharges and for good housekeeping and best management practices.

**Construction Site Stormwater Runoff Control** – Post Falls Highway District requires erosion control, sediment control, and waste material management controls for any projects within their MS4 jurisdiction. Any projects disturbing one or more acres are required to obtain NPDES coverage under the current Idaho Construction General Permit.

- Post Falls Highway District will log the nature and number of inspections, follow up actions, and subsequent enforcement actions.

**Post-Construction Stormwater Management for New Development and Redevelopment** – Post Falls Highway District will require the installation and long term maintenance of permanent stormwater controls at new development and redevelopment project sites within their MS4 boundary that result in land disturbance of greater than or equal to one (1) acre.

- The Highway Districts will perform plan reviews and approval of permanent stormwater controls.

**Pollution Prevention/Good Housekeeping for MS4 Operations** – Post Falls Highway District does not have any facilities, yards, or material stockpile areas within the MS4 boundary. However, they do still adhere to and require best management practices within their facilities.

- Post Falls Highway District will maintain records reflecting their catch basin and inlet inspection and cleaning.
- Post Falls Highway District will maintain a schedule for street sweeping in the MS4 area streets every spring as soon as weather permits.
- Post Falls Highway District began a spring reminder in 2021 to all registered trash pick-up groups to schedule their trash pick ups in the months of May.
- Post Falls Highway District conducts and documents annual staff training sessions concerning pollution prevention, proper BMP's, good housekeeping practices, and illegal discharge and detection information.
- Post Falls Highway District also performs public outreach, including workshops, fliers, and media, etc. These outreach methods are detailed throughout this SWMP.

- Post Falls Highway District maintains a website containing information on their MS4.

#### 1.4 Transfer of Ownership, Operational Authority, or Responsibility for SWMP Implementation

There are no Transfers of Ownership, Operational Authorities, or responsibilities for SWMP implementation. Each permitted Highway District is responsible for its own MS4 jurisdiction.

## 2. Map of MS4

## 2 MAP OF THE SEPARATE STORM SEWER SYSTEM

The Post Falls MS4 Outfall Map is attached at the end of this section.

### Post Falls Highway District

The Post Falls Highway District maintains fifteen (15) MS4 Outfalls within the Coeur d'Alene Urbanized Area. The primary receiving water is the Spokane River, stretching from Spokane Street to the west to Harbor Drive to the east with many pipe outlets (Outfalls) located on private property.

### 2021 Dry Weather Monitoring Pictures





Jul 20, 2021 8:36:04  
503 South Lower Crystal Bay Rd  
Post Falls  
Kootenai County  
Idaho

**Inlet to Outfall #5**



**Outfall #6**



Jul 20, 2021 9:12:17  
1947 West Riverview Dr  
Post Falls  
Kootenai County  
Idaho

**Inlet to Outfall #7**



**Inlet to Outfall #8**



Jul 20, 2021 9:53:52  
11555 West Riverview Dr  
Post Falls  
Kootenai County  
Idaho

**Inlet to Outfall #9**



Jul 20, 2021 10:00:39  
11142 West Riverview Dr  
Post Falls  
Kootenai County  
Idaho

**Outfall #10**



Jul 20, 2021 10:07:30 AM  
11075 West Riverview Drive  
Post Falls  
Kootenai County, Id.

**Inlet to Outfall #11**



Aug 10, 2021 2:54:03

**Outfall #12**



Jul 20, 2021 11:23:46  
3055 East Rivercrest Dr  
Post Falls  
Kootenai County, Id.

**Outfall #13**



Jul 20, 2021 11:23:59  
3055 East Rivercrest Dr  
Post Falls  
Kootenai County, Id.

**Outfall #14**



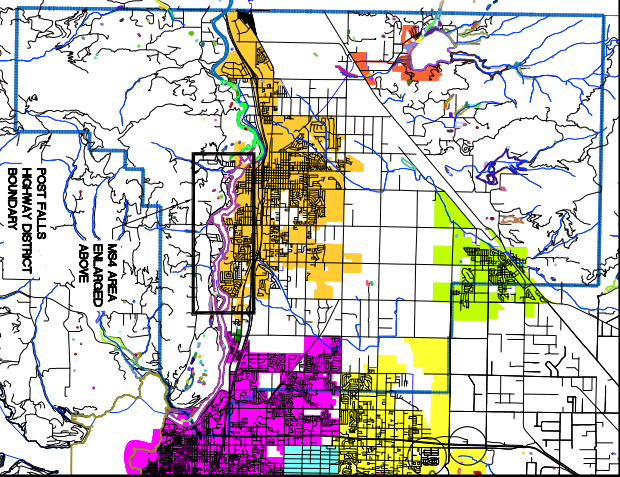
Aug 10, 2021 3:14:11

**Outfall #15**



## 2. Attachments

# POST FALLS HIGHWAY DISTRICT MUNICIPAL SEPARATE STORM SEWER SYSTEM (MS4) MAP USEPA NPDES PERMIT NO. IDS-028193



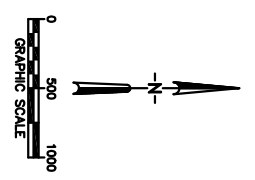
- LEGEND:**
- 2010 CENSUS DEFINED URBANIZED AREA
  - DRAINAGES PER NATIONAL HYDROGRAPHY DATASET
  - STREAMS (TRIBUTARIES) PER IDEO
  - CORPORATE BOUNDARIES
  - PHSD ROADSIDE DITCHES
  - PHSD STORM PIPING & CULVERTS
  - 1 OUTFALL POINTS (SEE TABLE)
  - CB CATCH BASINS (SEE TABLE)
  - CITY OF POST FALLS ID

THIS MAP SHOWS THE 2010 URBANIZED AREA BOUNDARY WHICH VARIES FROM THE 2000 URBANIZED AREA TO SHOW THE GROWTH PERMITS. HOWEVER, THERE IS NO SIGNIFICANT VARIATION WITHIN THE ENLARGED AREA SHOWN ON THIS MAP.

## OUTFALL TABLE

MAP NO.	LATITUDE	LONGITUDE	OUTFALL DESCRIPTION
1	N047° 41' 36.83"	W116° 56' 52.63"	15" CMP TO SPRING CREEK FROM SCHILLING DITCH, JUST SOUTH OF S MINNALOOSA LN
2	N047° 41' 47.60"	W116° 56' 48.2"	36" PVC TO SPRING CREEK FROM W RIVERVIEW STORM SEWER SYSTEM
3	N047° 41' 47.60"	W116° 56' 48.2"	12" PVC TO SPRING CREEK FROM W RIVERVIEW STORM SEWER SYSTEM
4	N047° 41' 57.14"	W116° 56' 15.47"	12" CMP TO SPOKANE RIVER FROM SOUTH LOWER CRYSTAL BAY RD
5	N047° 41' 58.11"	W116° 56' 09.64"	12" HDPE TO SPOKANE RIVER FROM SOUTH LOWER CRYSTAL BAY RD CATCH BASIN
6	N047° 41' 49.43"	W116° 55' 25.47"	18" HDPE TO SPOKANE RIVER, 12025 W RIVERVIEW DR.
7	N047° 41' 47.77"	W116° 55' 23.52"	18" CMP TO SPOKANE RIVER, 11917 W RIVERVIEW DR.
8	N047° 41' 46.61"	W116° 55' 24.24"	12" CMP TO UPRIGHT PIPE TO 4" HDPE TO SPOKANE RIVER, 11879 W RIVERVIEW DR.
9	N047° 41' 38.12"	W116° 55' 13.25"	18" CMP TO SPOKANE RIVER, 11555 W RIVERVIEW DR.
10	N047° 41' 32.87"	W116° 55' 04.28"	18" CMP TO GREEN FERRY BAY BOAT LAUNCH (SR) FROM RIVERVIEW DITCH
11	N047° 41' 29.80"	W116° 54' 58.50"	18" HDPE TO GREEN FERRY BAY (SR) FROM RIVERVIEW DITCH, 11075 W RIVERVIEW DR.
12	N047° 41' 26.21"	W116° 54' 52.12"	15" CMP TO CEDAR CK (ABOVE STREAM CULVERT) FROM DITCH, GREENFERRY DITCH
13	N047° 42' 02.42"	W116° 54' 18.69"	12" CMP FROM RIVERCREST DRIVE TO BRUSH THEN SPOKANE RIVER
14	N047° 42' 02.42"	W116° 54' 18.69"	12" CMP FROM RIVERCREST DRIVE TO BRUSH THEN SPOKANE RIVER
15	N047° 41' 37.00"	W116° 52' 27.00"	24" CMP FROM HARBOR DRIVE DITCH

NOTE: LATITUDE & LONGITUDE INFORMATION WAS COLLECTED WITH A HANDHELD GPS & MAY REFER TO ROADWAY CENTERLINES WHERE PIPES AND DITCHES ARE NOT EASILY ACCESSIBLE. THE DATA IS USEFUL TO GET IN THE GENERAL AREA OF THE OUTFALL.



PROJECT: P080104  
 FILE NAME: 2021 MS4 MAP.dwg  
 PFD: 2021 MS4 MAP.dwg  
 PLOT DATE: 11/12/2021  
 DRAWN BY: WJS

**RUBIN-YEAGER & ASSOCIATES, INC.**  
 CONSULTING ENGINEERS - LAND SURVEYORS - PLANNERS  
 320 N. HERTZ, STE. 102  
 CEDAR RAPIDS, IA 52401  
 219 PINE ST.  
 SANDPOINT, IDAHO 83864  
 (208) 265-4629

### **3. Targeting Pollutants of Concern**

### 3 TARGETING OF POLLUTANTS OF CONCERN

Part 4.3 of the NPDES Permit requires Post Falls Highway District to submit a Monitoring/Assessment Plan by October 1, 2022 designed to quantify pollutant loadings from the MS4 into the Spokane River.

#### 3.1 Monitoring/Assessment of MS4 Discharges to Impaired Waters

The pollutants of concern in the Post Falls Highway District MS4 Area are cadmium, lead, zinc, and total phosphorous. PFHD will monitor and assess pollutant loadings from the MS4 into the Spokane River for these parameters by the end of the permit term.

PFHD will ensure that only EPA-approved sample collection, analysis activities, and chain-of-custody procedures as described in *Requirements for Quality Assurance Project Plans (EPA/QA/R-5)* and *Guidance for Quality Assurance Project Plans (EPA/QA/G-5)* are used.

Further details of the actions to be taken by PFHD to monitor and assess MS4 discharges can be found in the Monitoring/Assessment Plan.

10/1/2022	Monitoring/Assessment Plan submitted to EPA
Public Engagement	Yes/No – describe activity if yes
By 9/30/2025	PFHD to conduct the monitoring/assessment of pollutants of concern in MS4 discharges

#### 3.2 Pollutant Reduction Activities

In order to reduce the levels of cadmium, lead, zinc, and total phosphorous from the MS4 into the Spokane River, Post Falls Highway District Plans to \_\_\_\_\_ and \_\_\_\_\_. The estimated pollutant reduction from these activities will be quantified and included in the final report as required by Part 4.1.3 of the NPDES Permit. (Post Falls Highway District anticipates the chosen pollutant reduction activities to be identified in the 2022 SWMP).

##### *Pollutant Reduction Activity #1*

Description	
Interim Milestone Goals	
Desired Outcome	
Person(s) or Department Responsible	

##### *Pollutant Reduction Activity #2*

Description	
Interim Milestone Goals	
Desired Outcome	
Person(s) or Department Responsible	

## **4. Legal Authority & Enforcement**

## 4 LEGAL AUTHORITY AND ENFORCEMENT

Post Falls Highway District has no ordinance authority and must rely on the authority of Kootenai County, Idaho Department of Environmental Quality, and Panhandle Health for enforcement.

<b>Post Falls Highway District <i>relies on the following legal authorities</i></b>	
1. To prohibit and eliminate illicit discharges to the MS4:	Kootenai County, Idaho Department of Environmental Quality, Panhandle Health
2. To control the discharge of spills, dumping or disposal of materials other than storm water to the MS4:	Kootenai County, Idaho Department of Environmental Quality, Panhandle Health
3. To control the discharge of storm water and pollutants from land disturbance and development, both during the construction phase and after site stabilization has been achieved	Kootenai County
4. To control the contribution of pollutants from one MS4 to another interconnected MS4;	Idaho Department of Environmental Quality
5. To require local compliance with such requirements; and	Kootenai County, Idaho Department of Environmental Quality, Panhandle Health
6. To carry out all inspection, surveillance, and monitoring procedures necessary to determine compliance and noncompliance with the Permit.	Idaho Department of Environmental Quality

## 5. Storm Water Control Measures

## 5.1 Construction Site Runoff



## 5 STORM WATER CONTROL MEASURES TO REDUCE POLLUTANTS TO THE MAXIMUM EXTENT PRACTICABLE

---

The following sections describe Post Falls Highway District’s program to reduce pollutants in the MS4 discharges to the maximum extent practicable, as required by Permit Part 3. Each section summarizes the mandatory program and describes how Post Falls Highway District meets each program component.

### 5.1 Construction Site Runoff Control

To control the discharge of storm water and pollutants from land disturbance during the construction phase Post Falls Highway District must:

- ✓ Require appropriate erosion, sediment, and waste management requirements for construction site activity that results in land disturbance of 1 acre or more.
- ✓ Establish installation and use guidelines for required erosion/sediment/waste management during all phases of construction site activity.
- ✓ At a minimum, review preconstruction site plans for construction sites that will result in land disturbance of one (1) or more acres, using a checklist or similar process to consider and address potential water quality impacts from the site activities.
- ✓ Inspect and enforce erosion, sediment, and waste management requirements on construction sites.
- ✓ Establish an inspection prioritization plan.
- ✓ Establish an enforcement response policy.
- ✓ Ensure that Permittee staff is trained to conduct these activities.

#### Staff Training

Date	Entities	Training Topics
2010 & 2011	LHD	Municipal Storm Water Pollution Prevention Training (Storm Watch)
2013	LHD & PFHD	Presentation by LHD’s consulting engineer regarding MS4 areas and IDDE; video titled “Rain Check: Storm Water Pollution Prevention for MS4’s”; Q&A session
December 22, 2014	LHD & PFHD	Annual Staff Training
December 11, 2015	LHD, PFHD, & ESHD	Annual Staff Training
November 29, 2016	LHD, PFHD, & ESHD	Annual Staff Training: BMPs, IDDE, “Rain Check” Videos
December 14, 2017	LHD, PFHD, & ESHD	Annual Staff Training: BMPs, Good Housekeeping, IDDE
December 7, 2018	LHD, PFHD, & ESHD	Annual Staff Training: BMPs, Good Housekeeping, IDDE
December 18, 2019	LHD, PFHD, & ESHD	Annual Staff Training: BMPs, Good Housekeeping, IDDE

#### *Requirements for Construction Site Operators Disturbing >1 Acre*

The Post Falls Highway District is aware of the NPDES Construction General Permit and complies with permit requirements for its own projects. The Post Falls Highway District will also assist with review & monitoring of private construction projects that discharge to its MS4. The District also tracks approach and utility permits within the MS4 and distributes information regarding storm

water BMPs to those projects located in the MS4 at the time of permit issuance.

*Process of Informing Construction Project Proponents to Obtain the NPDES CGP Coverage for Sites Disturbing >1 Acre*

The Post Falls Highway District continues its public education and outreach program through a partnership with SEEP in order to meet its requirements for distributing information to local construction site operators.

*Enforcement of Local Erosion, Sediment, and Waste Management Control Requirements for Sites Disturbing >1 Acre*

The Post Falls Highway District is in compliance to the best of the District's legal authority. The Post Falls Highway District does not have ordinance authority but will notify Kootenai County, IDEQ and EPA if it becomes aware of potential violations of the Construction General Permit and/or the Kootenai County Site Disturbance Ordinance.

*Prioritization of Inspection of Construction Sites*

Highest Priority – Projects with one acre or more of disturbance and with potential to discharge to Post Falls Highway District MS4 Jurisdiction.

Medium Priority – Projects with less than one area of disturbance and potential to discharge to Post Falls Highway District MS4 Jurisdiction.

Lower Priority – Projects that have no potential to discharge to Post Falls Highway District MS4 Jurisdiction.

Post Falls Highway District MS4 will log the nature and number of inspections, follow up actions, and subsequent enforcement actions (see attached Construction Site Inspection Log).

Planned Activities for 2022 and beyond include continued implementation of procedures for site inspections for work within the road right-of-way.

*Enforcement Response Policy*

As stated previously, Post Falls Highway District does not have ordinance authority. Therefore, the District will notify Kootenai County, IDEQ, and Panhandle Health if it becomes aware of any potential violations.

*Planned Activities for 2022*

The Post Falls Highway District will do the following during the 2022 calendar year:

- Continue to develop, discuss with the Associated Highway District supervisors and commissioners, and adopt when finalized the NPDES related standards approved for inclusion in the next Associated Highway Districts of Kootenai County Highway Standards.
- Comply with CGP requirements for Post Falls Highway District constructed projects.
- Review erosion control plans as part of its review process for private projects under Post Falls Highway District jurisdiction.
- As part of the road inspection process for new private projects, ensure that the appropriate level of erosion control is in place during construction.
- Educate staff on construction storm water discharges and direct staff to keep an eye on construction storm water discharges from private projects during road maintenance activities and

maintenance rounds.

- Document and report to IDEQ and Kootenai County any detected illegal construction storm water discharges.
- The District will track approach and utility permits within the MS4 and at the time of permit issuance will distribute information regarding storm water BMPs to those projects located in the MS4.

## 5.1 Attachments



## 2021 MS4 ANNUAL STAFF TRAINING

Thursday, September 30, 2021 7:00AM

### SIGN-IN SHEET

Print Name:

Signature:

Print Name:	Signature:
Eric Prestegard	
Randy Nare	
Michael Ketchum	
Tuekota Tate-Vandever	
Travis Hall	
Travis Wisley	
Taylor Wood	
Leslie Likes	
Shannon Schranck	
Ed Mael	
Michael Lenz	
Darrel Stevens	
Brian Crumb	
Harry Howell	

7



2021  
MS4 PERMIT  

---

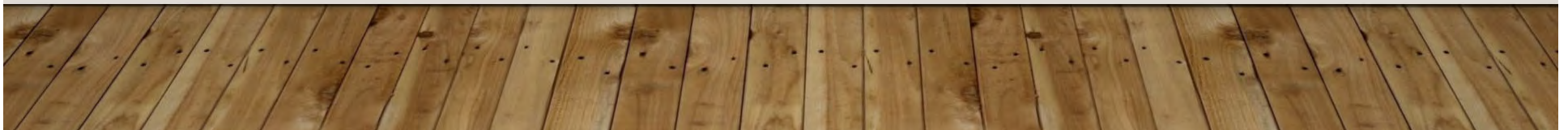
ANNUAL STAFF  
TRAINING

# WHY ARE WE HERE?

Annual Training is required by the District's MS4 permit:

"Permittees' construction inspectors, maintenance field staff, and code compliance officers must be sufficiently trained to conduct dry weather screening activities and to respond to reports of illicit discharges and spills into the MS4."

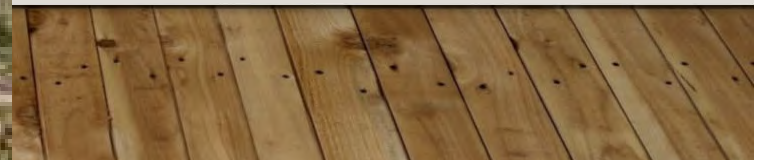
*"Permittees must ensure that all persons responsible for the stormwater infrastructure management and O&M activities as required by this Part are trained or otherwise qualified to conduct such activities."*





## OUR ANNUAL TRAINING WILL REVIEW...

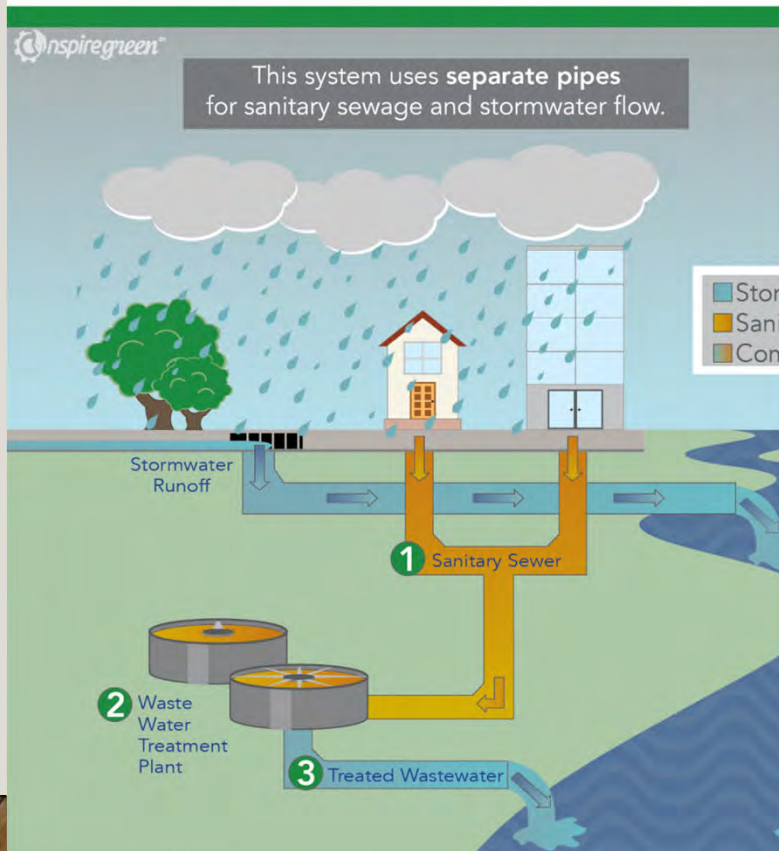
- We will talk about what an MS4 Permit is.
- We will go over Identifying and responding to illicit discharges and spills
- O&M activities to protect stormwater quality
- Good Housekeeping and Best Management Practices



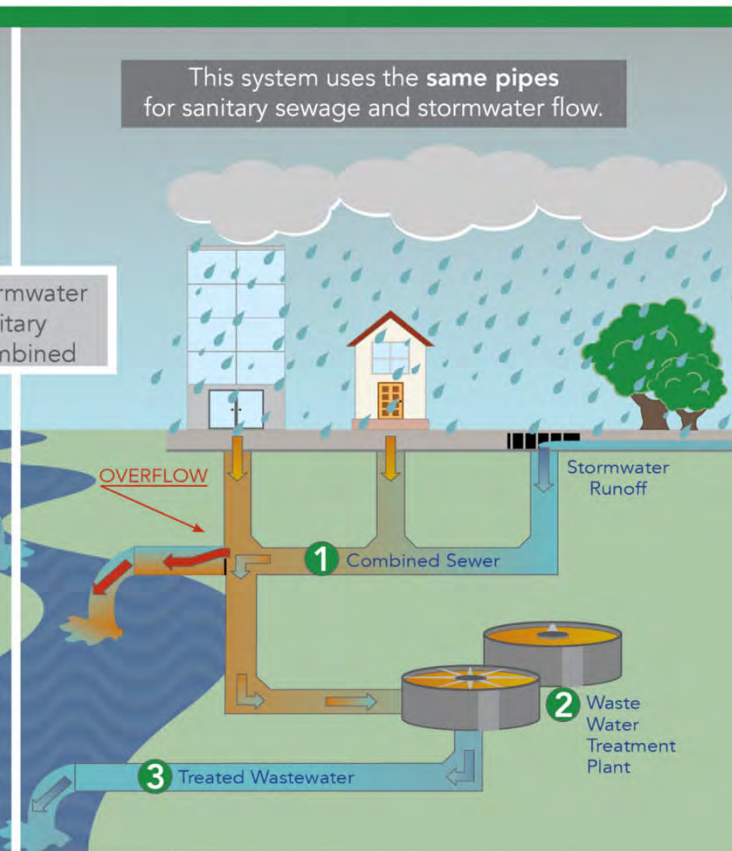


# WHAT IS A MS4?

## MS4 MUNICIPAL SEPARATE STORM SEWER SYSTEM



## CSS COMBINED SEWER SYSTEM

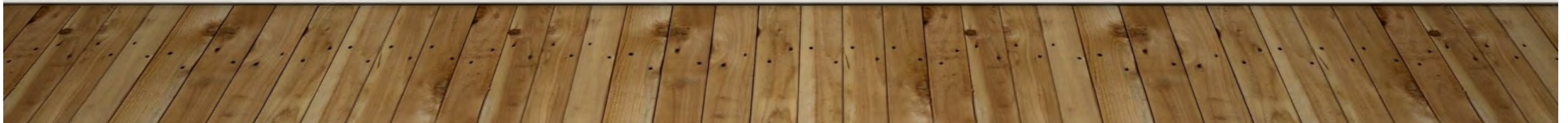
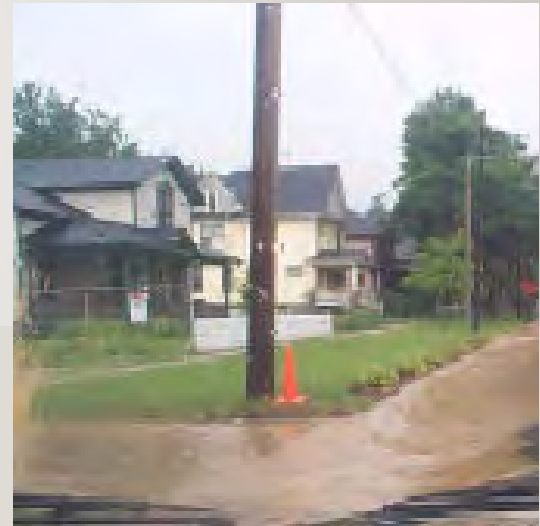




MS4' S CONSIST OF  
ROADS WITH  
DRAINAGE  
SYSTEMS  
INCLUDING:

CATCH BASINS,  
DITCHES,  
CURB & GUTTER,  
CULVERTS,  
DRAINAGE  
SWALES,& SNOW  
STORAGE

THAT DRAIN TO A  
WATERS OF THE  
US....



PERTAINING TO A  
HIGHWAY DISTRICT  
THIS IS BASICALLY,

A) ANYTHING INSIDE  
OUR RIGHT-OF-WAY,

B) WITHIN THE MS4  
BOUNDARY  
(URBANIZED AREA)

C) THAT COLLECTS  
STORMWATER,

D) AND OUTFALLS TO  
A WATER OF THE US.



# WHAT ABOUT THE MS4 PERMIT?

---

Issued by the EPA

Administrated by the Idaho Department of Environmental Quality

Allows MS4's to discharge stormwater to Waters of the US

It was developed as a result of the Clean Water Act (1972)

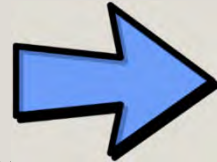
Must be clear, specific, measurable, enforceable

Helps keep our waters clean

# WHAT DOES A MS4 PERMIT REQUIRE?

All Operators of Regulated MS4s must implement a Storm Water Management Program (SWMP) designed to:

- Reduce pollutants to the *maximum extent practicable*;
- Protect water quality; and
- Satisfy the appropriate water quality requirements of the Clean Water Act.



The SWMP must address:

- Public Education and Outreach
- Illicit Discharge Detection and Elimination
- Construction Site Runoff Control
- Post-Construction Stormwater Management
- Pollution Prevention/Good Housekeeping

- HOW TO IDENTIFY AND RESPOND TO ILLICIT DISCHARGES AND SPILLS.



# WHAT IS AN ILLICIT DISCHARGE?



- Any discharge to a MS4 that is not composed entirely of stormwater; except discharges pursuant to a NPDES permit and discharges from firefighting.

## WHAT ARE SOME STORMWATER POLLUTANTS?

---

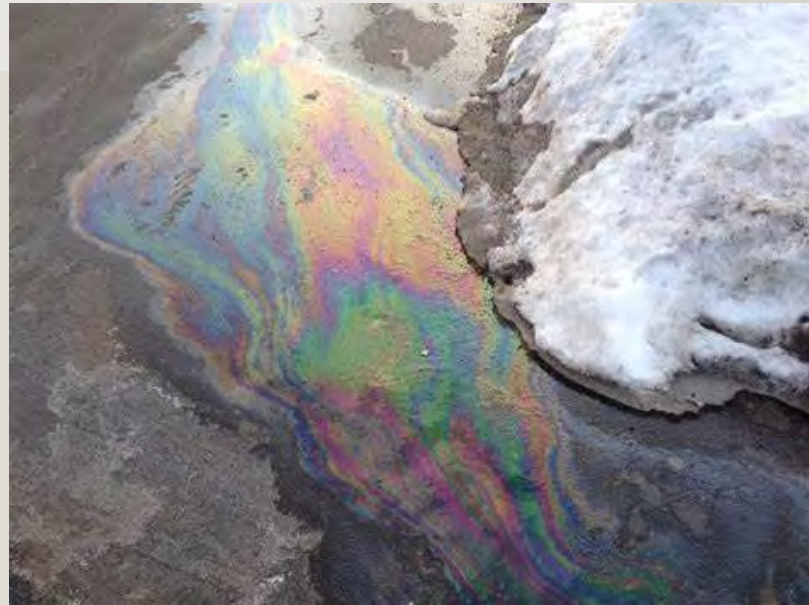
- Septic Overflow or Leakage
- Fertilizers
- Pesticides
- Animal Waste
- Grass Clippings
- Vegetative Debris
- Oil and Gas
- Pool Water
- Sediment (Mud)
- Car Wash Discharge
- Cement Washout

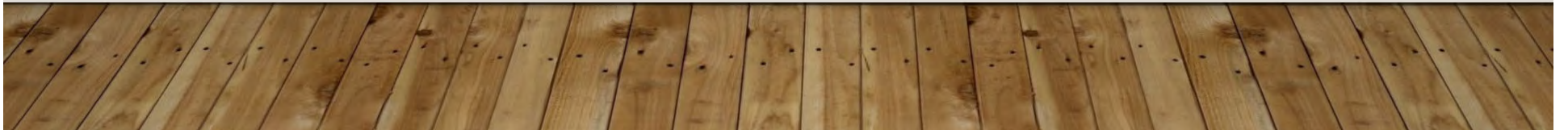


# HOW TO IDENTIFY AN ILLICIT DISCHARGE?

---

Always keep your eyes  
open for potential illicit  
discharge occurrences.



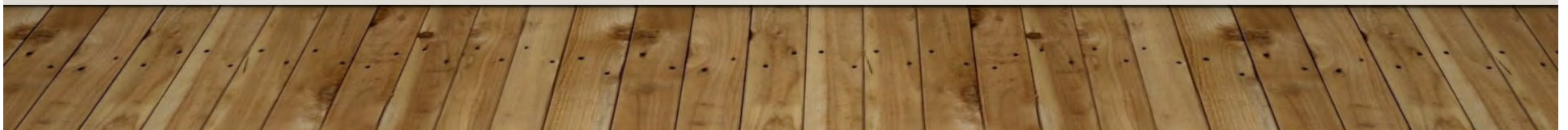


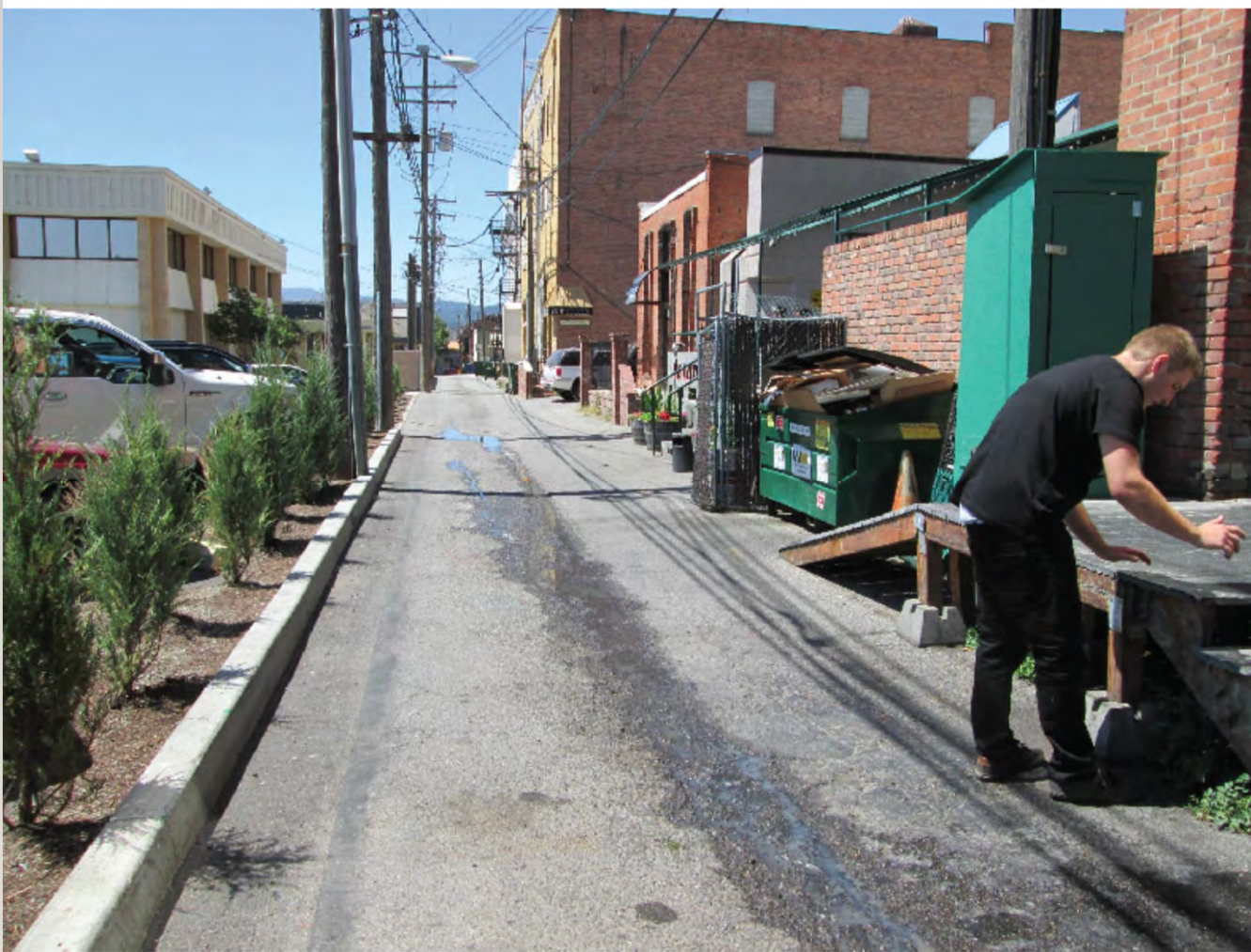


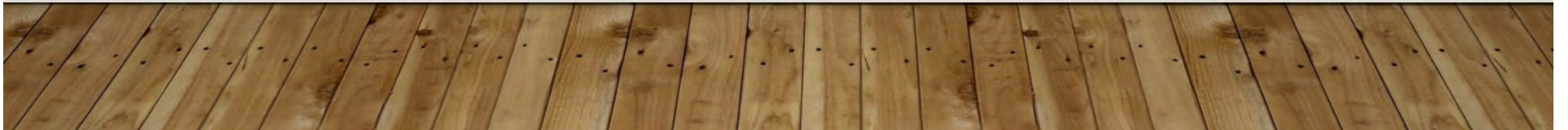




Alley behind Crickets











# REFER TO THE ILLICIT DISCHARGE AND SPILL RESPONSE PLAN

---

Contact your Supervisor

Take photos

Stay on Highway District ROW

Document Location/Address

2021

## ILLICIT DISCHARGE AND SPILL RESPONSE PLAN FOR POST FALLS HIGHWAY DISTRICT LAKES HIGHWAY DISTRICT AND EAST SIDE HIGHWAY DISTRICT



Address:  
11341 N. Ramsey Road  
Hayden, ID 83435  
Phone:  
208.772.7527



Address:  
5025 E. Seltice Way  
Post Falls, ID 83854  
Phone:  
208.765.3717



Address:  
6095 E. Mule Trail Road  
Coeur d'Alene, ID 83814  
Phone:  
208.765.4714

# HOW DO YOU RESPOND TO AN ILLICIT DISCHARGE?

---

- In the event of a suspected illicit discharge, it will be the responsibility of the Highway District to:
  - ❖ Investigate
  - ❖ Discharge Abatement
  - ❖ Document the corrective action
- If the discharge falls under the jurisdiction of an already existing plan, it will be the Highway District's responsibility to notify the appropriate party. Documentation of the corrective action will be obtained kept on file.

# OPERATIONS & MAINTENANCE ACTIVITIES FOR CLEAN STORMWATER

---

## **Permanent Stormwater Controls O&M**

Detention Swales

Grassy Infiltration Areas

Filtration Basin

# PERMANENT STORMWATER CONTROLS

---

## Periodic Maintenance

- Detention Swales
- Grassy Infiltration Areas
- Filtration Basins

## Swales

Swales are designed to manage water runoff, filter pollutants and increase runoff infiltration.



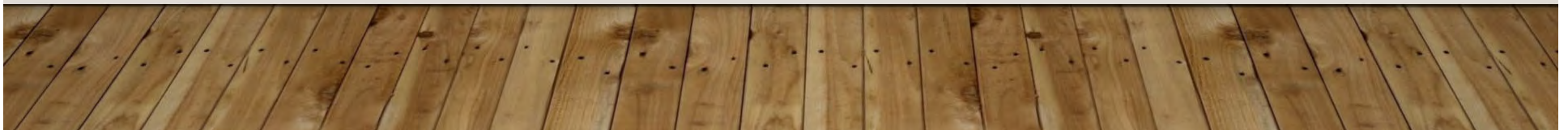
# DITCHES AND CULVERTS

---

Ditches need periodic reshaping  
and reseeding

Culverts need cleaning out

Catch Basins need cleaning out



SO WHAT ARE  
SOME GOOD  
POLLUTION  
PREVENTION &  
HOUSEKEEPING  
PRACTICES?

---



# FLEET VEHICLE WASHING

Washing Fleet Vehicles generates oil, grease, sediment and metals, as well as cleaning solvents into the wash water.

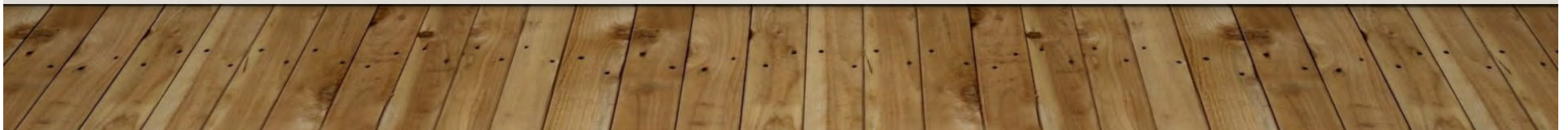


Perform a dry debris removal, collect and dispose as solid waste.

Wash vehicles in a designated WASH area.

Collect wash water if possible.

Use a power washer avoiding detergents.



# SNOW REMOVAL & SNOW DISPOSAL

---





## SNOW REMOVAL & SNOW DISPOSAL

---

- **Use Upland Areas for Storage and Disposal of Snow**
- **Choose flat pervious areas where melting snow can infiltrate**
- **Keep snow storage at least 100 feet away from water bodies, wetlands, and public or private drinking water wells**
- **Remove sediment and debris from dumping areas each spring**

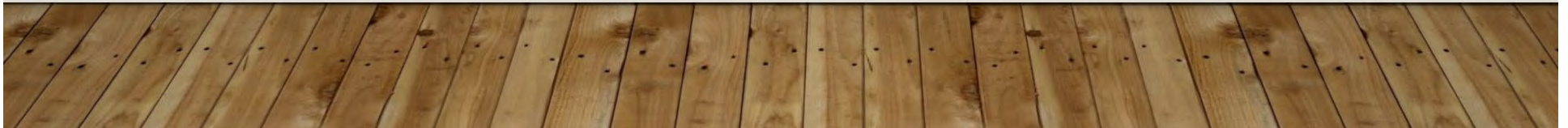


# PROPER MATERIAL STORAGE

Maintaining Order in your Shop



**The Best Spill Protection is Proper Containment.**



# MATERIALS STORAGE

## Store

- Store oil, grease, chemicals and other hazardous materials in containers on spill pallets

## Stockpile Placement

Do not stockpile sediment, aggregate, sand, or asphalt near drainage systems

## Covered Areas

- Store materials in covered areas where possible

## Double Containment

Make sure that storage areas for chemicals and fuels have double containment



# STREET MAINTENANCE

---

- Certain Streets that discharge to receiving waters should have priority in street sweeping and debris removal.



- Connected Streets with a higher pollution loading should be prioritized and cleaned more frequently.





Sherman Avenue





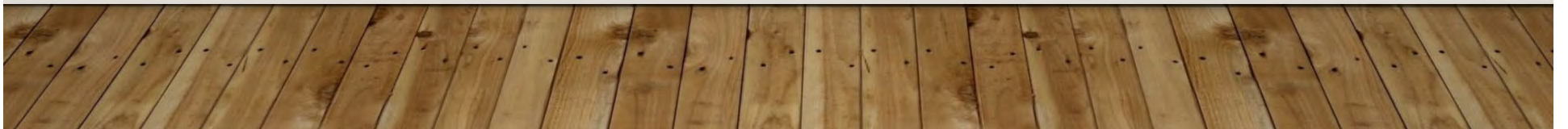
Alley Behind Sherman Avenue

08/19/2011



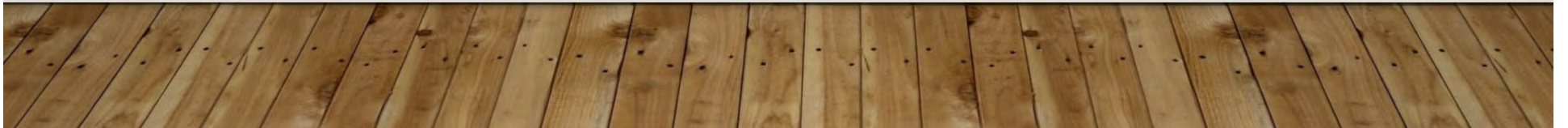


Sanders Beach





Sanders Beach Outfall



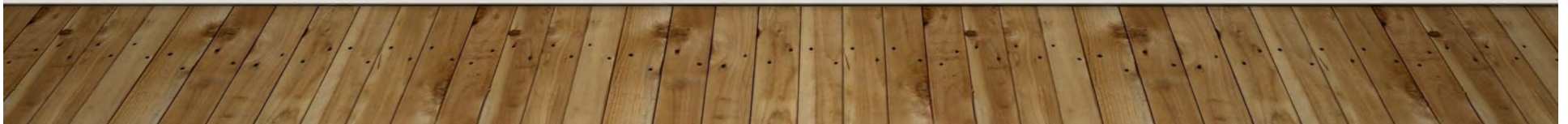




# SPILL CONTROL & RESPONSE

---

- Everyone should be familiar with spill control response actions:
- What to do
- Who to call
- Where is spill equipment



# BUILDING AND GROUNDS MAINTENANCE

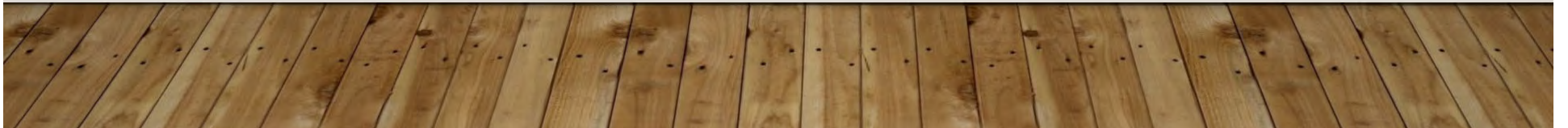
- Clean up after yourself
- Keep solid waste in containers away from drainage systems
- Perform Periodic brooming of the maintenance yard



**THE BOTTOM LINE.....**



**Is Keeping our Waters Clean!**



# ANY QUESTIONS?



Laura Winter, P.E., CFM

[lwinter@ruenyeager.com](mailto:lwinter@ruenyeager.com)

(208) 292-0820





## Construction Site Inspection Log

Project Name	Project Location	Does Project have SWPPP?
Inspection No.	Inspection Date	Weather at time of Inspection
Describe Present Phase of Construction:		
Type of Inspection <input type="checkbox"/> Regular <input type="checkbox"/> Pre-Storm Event <input type="checkbox"/> During Storm Event <input type="checkbox"/> Post Storm Event		
Is there evidence of any discharges?		
List BMP's in place:		
Are there any site conditions that need to be addressed?		

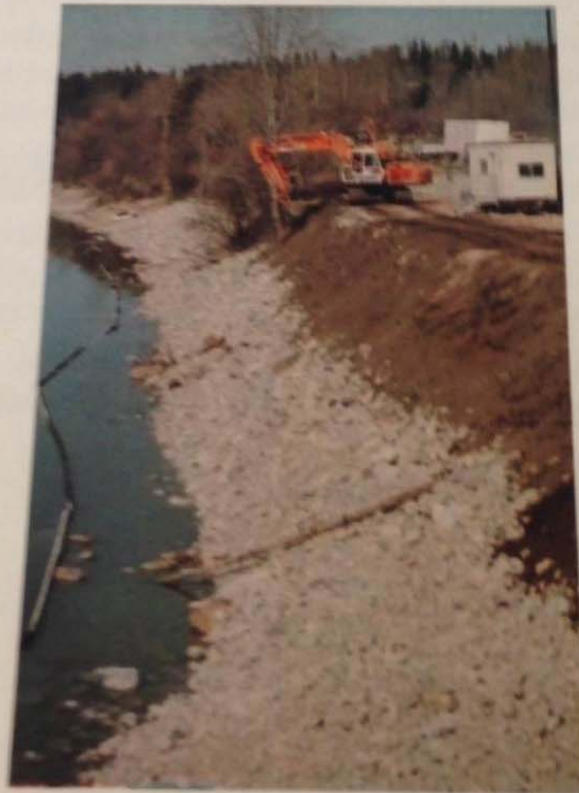








North Idaho  
**Stormwater  
Erosion &  
Sediment Control  
Field Guide**



[www.PanhandleSEEP.org](http://www.PanhandleSEEP.org)

## **5.2 Storm Water Management for Area of New Development**

## 5.2 Storm Water Management for Areas of New Development and Redevelopment

To control the discharge of storm water and pollutants from land disturbance and development, after construction is completed Post Falls Highway District must:

- ✓ Require the installation and long-term maintenance of permanent storm water controls at new development and redevelopment project sites that result from land disturbance of 1 acre or more.
  - Permanent storm water controls must be sufficient to retain onsite the runoff volume produced from a 24-hour, 95th percentile storm event; or sufficient to provide the level of pollutant removal greater than the pollutant removal expected by using onsite retention of runoff volume produced from a 24 hour, 95th percentile storm event.
  - Alternatively, storm water treatment requirements must be required that can attain an equal or greater level of water quality benefits as onsite retention of storm water discharges from new development and redevelopment sites.
  - Other alternatives may be allowed for projects to meet the onsite retention requirement at a particular project site based on technical infeasibility, and/or site constraints.
- ✓ Establish proper installation and use guidelines for permanent storm water controls – the Permittee may establish different types of controls for different types and/or sizes of site development activity.
- ✓ At a minimum, review and approve preconstruction plans for permanent storm water controls at new development and redevelopment sites that result from land disturbance of one (1) or more acres
- ✓ Periodically inspect “high priority” permanent storm water controls for proper installation and operation, using an inspection prioritization system
- ✓ Maintain an inspection prioritization plan and enforcement response policy,
- ✓ Maintain a database inventory to track and manage the operational condition of permanent storm water controls
- ✓ Ensure the appropriate Permittee staff is trained to conduct these activities.

### *Implement and Enforce Installation Requirements of Permanent Sites*

Ordinances are already in place through Kootenai County, the City of Post Falls and the City of Coeur d’Alene that require post-construction storm water controls for significant private construction projects in the Post Falls Highway District’s jurisdiction. Post Falls Highway District design and construction practices have historically followed the principals of the ordinances. The Post Falls Highway District maintains all drainage facilities within its right-of-way and provides plan review of postconstruction storm water designs for projects within its jurisdiction.

### *Prioritization of Permanent Stormwater Controls*

Highest Priority – Projects with one acre or more of disturbance and with potential to discharge to Post Falls Highway District MS4 jurisdiction.

Medium Priority – Projects with less than one area of disturbance and potential to discharge to Post Falls Highway District MS4 jurisdiction.

Lower Priority – Projects that have no potential to discharge to Post Falls Highway District MS4 jurisdiction.

The Highway Districts will log the nature and number of inspections, follow up actions, and subsequent enforcement actions.

#### *Enforcement Response Policy*

As stated previously, Post Falls Highway District does not have ordinance authority. Therefore, the District will notify Kootenai County, IDEQ and Panhandle Health if it becomes aware of any potential violations.

#### *Tracking of Operation & Maintenance of Permanent Controls*

Post Falls Highway District staff provide the Operations & Maintenance for permanent stormwater controls with their own jurisdiction. As the Outfall maps are revised to include all permanent stormwater controls, a tracking sheet will be developed to track the Operations & Maintenance activities. It is anticipated this task to be completed by 2024.

#### *Planned Activities for 2022*

The Post Falls Highway District will do the following during the 2022 calendar year:

- Continue efforts to advocate NPDES standards to be included in the Associated Highway Districts Highway Standards.
- Continue to follow local storm water management design principles for Post Falls Highway District constructed projects.
- Provide installation inspection of storm water controls for private projects within the right-of-way and those facilities off the right-of-way that discharge to the MS4.
- Continue maintaining all drainage facilities within the right-of-way.
- Monitor private storm water facilities off the right-of-way that discharge to the MS4. Notify the owner and/or appropriate regulatory entity if the facility is not being maintained or is not functioning properly.

### **5.3 Pollution Prevention & Good Housekeeping**

### 5.3 Pollution Prevention/Good Housekeeping for MS4 Operations

To properly operate and maintain the MS4, and its facilities using prudent pollution prevention and good housekeeping, Post Falls Highway Districts must:

- ✓ Maintain a current Map of the MS4, including an inventory of all Outfalls and other features;
- ✓ Inspect catch basins and inlets at least once every five years. using an inspection prioritization plan
- ✓ Maintain or clean catch basins based on those inspections,
- ✓ If applicable, maintain Operation and Maintenance (O&M) Procedures for Streets, Roads, Highways and Parking Lots, including:
  - ✓ If applicable, inventory and manage Street/Road Maintenance Materials
  - ✓ If applicable, implement a Street, Road, Highway and Parking Lot Sweeping Management Plan;
  - ✓ Maintain O&M Procedures for Other Municipal Areas and Activities to protect water quality;
  - ✓ Use best practices to reduce the discharge of pollutants to the MS4 associated with the Permittee's application and storage of pesticides, herbicides and fertilizers;
  - ✓ Develop site-specific Pollution Prevention Plans for Permittee-owned facilities;
  - ✓ Work cooperatively with other entities to control litter on a regular basis;
  - ✓ Ensure the appropriate Permittee staff is trained to conduct these activities.

#### *Operations & Maintenance Requirements*

Operation and Maintenance procedures to protect storm water runoff will be formalized into a text document as part of the SWMP by 2022 Annual Report. PFHD maintenance staff attended a training session on February 1, 2012, December 4, 2013, December 22, 2014, December 11, 2015, and November 29, 2016, December 14, 2017, December 7, 2018, December 18, 2019, and September 30, 2021. (See attachment for the 2021 sign-in attendance sheets for the training and a copy of the presentation).

The District's Operations & Maintenance has been improved through annual training on the Highway District's winter maintenance and snow removal policy. The District will continue to perform street sweeping in the MS4 area this spring and early summer.

The O&M procedures have been developed and the District believes this is adequate to cover the requirement for a Stormwater Pollution Prevention Plan for its maintenance facility, since the facility is outside of the MS4 boundary.

#### *Inlet/Catch Basin Inspections & Maintenance*

As PFHD improves and completes their outfall map to include catch basins, an inspection and maintenance schedule will be developed and implemented to meet the requirements of catch basin inspection and cleaning at least once per five years.

#### *Last Review/Update of Inspection and Maintenance Schedules*

PFHD will implement a yearly checklist (see attached) of Pollution Prevention and Good Housekeeping Practices and intends to incorporate this annual inspection into its 2022 activities.

#### *Material Storage Locations*

The PFHD Maintenance yards are located outside of the Coeur d'Alene Urbanized Area and MS4 Boundary. Therefore, action contained in Section 3.5.4 is not specifically required. No further action will be taken under this permit.

#### *Sweeping Management Plan*

PFHD spring and summer maintenance efforts include street sweeping in the MS4 boundary. PFHD will include their Street Sweeping Management Plan in the SWMP no later than April 3, 2025.

#### *Planned Activities for 2022*

The PFHD will do the following during the 2022 calendar year:

- Conduct another training session for PFHD employees in 2022 on good housekeeping, BMPs, and illicit discharge detection.
- Perform a Pollution Prevention & Good Housekeeping Check.
- Send additional staff members to SEEP certification classes.



## 5.3 Attachments



**Pollution Prevention / Good Housekeeping Checklist**  
 (to be performed annually)

Date	Item to Check for Good Practices	Comments
	<i>Fleet Maintenance and Vehicle Washing Operations</i>	
	<i>Building Maintenance</i>	
	<i>Snow Management and Snow Disposal Sites</i>	
	<i>Solid Waste Transfer Activities</i>	
	<i>Materials Storage</i>	
	<i>Heavy Equipment Storage Area</i>	
	<i>Hazardous Materials Storage</i>	
	<i>Used Oil Recycling</i>	
	<i>Spill Control &amp; Prevention Measure for Refueling</i>	

## 5.4 Illicit Discharge Detection & Elimination

## 5.4 Illicit Discharge Detection and Elimination

To prohibit and eliminate illicit discharges to the MS4, Lakes, Post Falls, and East Side Highway Districts must:

- ✓ Enforce an ordinance that effectively prohibits illicit discharges into the MS4;
- ✓ Respond to Complaints or Reports of illicit Discharges from the Public;
- ✓ Keep Track of Complaints/Reports, and any Response Actions Taken;
- ✓ Conduct MS4 outfall screening inspections during dry weather;
- ✓ Follow-up to determine the source of a recurring illicit discharge identified as a result of complaints, or of the dry weather screening investigations within thirty (30) days;
- ✓ Take appropriate action to address the source of an ongoing illicit discharge;
- ✓ Prevent and Respond to Spills to the MS4, as appropriate;
- ✓ Coordinate with other entities for the proper disposal of used oil and toxic materials;
- ✓ Ensure the appropriate Permittee staff is trained to conduct these activities.

### *Illicit Discharge Policies*

The Highway District will monitor MS4 areas for illicit discharges in accordance with the Illicit Discharge and Spill Response Plan (see attached). Examples of illicit discharges that the District will be looking for include:

- Sanitary sewage or drainfield effluent running over the surface into a ditch,
- Paint or oil dumped into a ditch or storm drain,
- A shop floor drain discharging to a ditch,
- Turbid construction site runoff,
- Other harmful pollutants (use common sense).

The Highway Districts have also developed a Spill Response Procedure detailing the actions to be taken when an illicit discharge is detected by a District employee:

1. Be Safe: Identify the pollutant and determine if it is safe to remain in the area and if safety equipment is needed
2. Stop the Source: If the source is readily identifiable and can be stopped quickly and safely, do so.
3. Notify: Dial 911 if you deem it an emergency.
4. Report the spill to your supervisor.
5. Notify the following agencies:
  - Northern Lakes Fire District: (208) 772-3044
  - Kootenai County Sheriff's Office: (208) 446-1850 for chemical spills
  - Idaho Department of Environmental Quality: (208) 769-1422 for wastewater discharges
  - Kootenai County Building and Planning Department: (208) 446-1070 for minor sediment discharges and code violations.
6. Protect Stormwater: If it can be safely done, while help is on the way, confine the spill with sandbags, berms, diversion ditches, etc.

7. Assist with Clean Up: Remain on site and assist by providing materials, labor and equipment as directed by the authority agency. Examples include sand, gravel, the District’s Spill Kit, etc. Communicate with the authority agency and make sure that they are aware of concerns for protecting downstream surface water.
8. Notify EPA within 24 hours at (206) 553-1846.
9. Report: Supervisor to write a summary report of the incident and file it with SWMP monitoring records. Submit a copy of the report to EPA and IDEQ within 30 days.

The Dry Weather Outfall Screening procedures are as follows:

Task	Description
Dry Weather Field Inspections	Outfall Reconnaissance Inventory (ORI) – MS4’s shall be visited at a minimum of one time during the months of July through October.
Dry Weather Quality Testing	At a minimum, if the inspector observes actual flow from an MS4 outfall, during dry weather, he/she should specifically note any observed color, odor, clarity, floating solids, foam, sheen, suspended or settled solids or other indicators of pollution. Additional water quality testing may also be warranted. If deemed necessary by the permit coordinator, obtain a sample kit from Accurate Testing Labs in Hayden or other approved source and sample for parameters identified.
Analysis of Water Quality Data	Compare background tests to dry weather sampling results, if water present during dry weather inspections.
Reporting	Prepare a technical memo identifying the following: <ul style="list-style-type: none"> <li>• Work performed,</li> <li>• Results from Water Quality Testing,</li> <li>• Illicit Discharge Detected, Reported and Results,</li> <li>• Inclusion of SWMP email tracking log.</li> </ul>

*Illicit Discharge Policies*

The Post Falls Highway District is not able to adopt an illicit discharge ordinance because it does not have authority to do so, but will work with Kootenai County, EPA, and IDEQ for correction of observed illicit discharges.

The Post Falls Highway District has a MS4 Outfall Map identifying outfalls that are point source discharges to waters of the US (see attached). The Post Falls Highway District also follows the Illicit Detection and Spill Response Plan as part of this SWMP (see attached). An EPA flier regarding illicit discharge has been made available to the public at the District office. Post Falls Highway District maintenance staff attends annual training that includes illicit discharge detection and best management practice education. This year’s training was performed on September 30, 2021. The training session included a presentation by the District’s consulting engineer, Laura Winter, regarding MS4 areas, BMPs, good housekeeping and Illicit Discharge Detection and Elimination. This included an interactive Power Point presentation on outfall protection, maintenance, and good housekeeping (see attached sign in sheet and presentation).

No illicit discharges were detected in 2021. In addition, the Director of Highways and staff continue to monitor the MS4 for illicit discharge during their routine maintenance rounds.

### *Conditional Allowance of Non-Stormwater Discharges*

The District does not have ordinance authority and it is not aware of any existing local conditions on non-storm water discharges. If the District observes what it deems to be violations of state surface water quality standards (IDAPA 58.01.02.200), it will notify EPA and IDEQ for enforcement assistance.

Some examples of allowable non-storm water discharges that may not need to be addressed include:

- Water line flushing,
- Irrigation water,
- Discharges from potable water sources,
- Foundation drains,
- Air-conditioning condensate,
- Individual residence car wash water,
- Dechlorinated swimming pool discharges,
- Street wash water,
- Groundwater.

### *Outfall Screening During Dry Weather*

The Post Falls Highway District conducts annual dry weather screening of all outfalls within the District.

Dry weather screening was conducted on July 20, 2021 on all the District's outfalls. The following was noted as provided in the "2021 Dry Weather Monitoring Report" (see attached).

- A "New Found" Outfall Numbered 8 had a flow of less than 1 gallons per minute without any unusual deposits, vegetation, or conditions. A sample could not be taken as the outfall is on private property and locked behind a chain link fence.
- A sample was taken by mistake from the Cedar Creek flows instead of Outfall #11. This sample had an e.coli bacteria marker greater than 2400 mg/L, over the established Ada County, Idaho thresholds. At this time, water quality standards for Kootenai County, Idaho have not been published. This location was revisited for a second sample and was observed dry on October 4, 2021.

Photos were taken of all outfalls, either at their inlets or their outlets, depending on accessibility or clarity of field conditions.

### *Response to Illicit Discharges, Typical Complaints, and Other Findings*

Responsibilities for illicit discharge detection and typical illicit discharge inspection type are as follows:

<b>Tasks</b>	<b>Jurisdictional Authority</b>	<b>Responsible Parties</b>
Inspection of Potential Illicit Discharge within Public Road Right-of-Way	PFHD	PFHD
Inspection of Potential Illicit Discharge from a Private Property	County	County
Repair/Cleanup of Illicit Discharge within Public Right-of-Way	PFHD / County HazMat / Sewer District	PFHD / County HazMat
Enforcement	County	County

All actions relating to illicit discharge detection will be recorded in a database administered by Post Falls Highway District. The database will be organized by MS4 outfall and will contain information such as: the outfalls inspected, any complaints received, and tests conducted. Illicit discharge detection activities will also be documented on the storm sewer system map.

If an illicit discharge is identified, Post Falls Highway District will notify EPA within 24 hours by phone at (206) 553-1846, and provide a written report within 5 days.

*Most Successful Illicit Discharge Response*

Not applicable.

*Planned Activities for 2022*

The Post Falls Highway District will do the following during the 2022 calendar year:

- Visually monitor the MS4 area during routine maintenance rounds.
- Screen all outfalls during July-October in accordance with the Dry Weather Screening Plan.
- Conduct additional screening in spring and fall during maintenance and monitoring.
- Document and report detected illicit discharges to Kootenai County, EPA and IDEQ in accordance with the Spill Response Plan.

*Significant Findings or Changes of the MS4*

The Post Falls Highway District Outfall Map was revised from the previous permit term to remove outfalls that were not point source discharges to the Spokane River (see attached 2021 Post Falls Highway District Outfall Map in Section 2 - Attachments).

## 5.4 Attachments



ILLICIT DISCHARGE AND SPILL RESPONSE PLAN  
for  
LAKES HIGHWAY DISTRICT  
POST FALLS HIGHWAY DISTRICT  
AND  
EAST SIDE HIGHWAY DISTRICT



**Address:**  
11341 N. Ramsey Road  
Hayden, ID 83835

**Phone:**  
208.772.7527



**Address:**  
5629 E. Seltice Way  
Post Falls, ID 83854

**Phone:**  
208.765.3717



**Address:**  
6095 E. Mullan Trail Road  
Coeur d'Alene, ID 83814

**Phone:**  
208.765.4714

**PURPOSE**

The purpose of the Illicit Discharge and Spill response plan is to provide guidance for:

- Responding to and investigating discharge complaints
- Who to notify in the event of a discharge
- Corrective action needed
- Documentation

This plan is not intended to replace any existing plans that were designed to address cleanup of hazardous material (HAZMAT) or sanitary sewer overflows. This plan will serve as a supplement to those plans and provide guidance for spills that are not included in plans already set in place.

## **ILLICIT DISCHARGE**

### ***DEFINED***

40 CFR 122.26(b)(2) defines an illicit discharge as any discharge to an MS4 that is not composed entirely of storm water, except allowable discharges pursuant to an NPDES permit, including those resulting from firefighting activities.

### **COMMON ILLICIT DISCHARGES**

- Sewage and septage flows
- Chemical/Oil
- Car wash wastewaters (non-residential)
- Laundry wastewater (grey water)
- Irrigation water

## **COMMON CAUSES OF ILLICIT DISCHARGE**

- Improper sewer line connections
- Sanitary sewer overflows
- Failing septic systems
- Industrial/Commercial waste discharge
- Accidental spills
- Excess landscaping irrigation water
- Leaking underground storage tanks

## **HIGHWAY DISTRICT ROLES AND RESPONSIBILITIES**

In the event of an illicit discharge, it will be the responsibility of the Highway District with jurisdiction to:

- Investigate the complaint no later than two (2) working days.
- If the investigation confirms an illicit discharge, the Highway District will begin the process of eliminating the discharge. Water sampling shall be performed if there is reason to believe the discharge is considered a public health threat.
- Any discharge that is identified as an immediate threat to public health and safety will be reported to local emergency responders (911). If the investigation determines the discharge falls under another agency's jurisdiction, the Highway District will notify that entity (see Contact List below). Once the investigation confirms an illicit discharge, the Highway District will begin the abatement process. The party responsible for the discharge, once identified, will be notified immediately and will be required to eliminate the illicit discharge. The Highway District will attempt to educate the responsible party to prevent any future discharge. If the responsible party cannot be identified, the Highway District will contact residents and/or businesses near the discharge, in an effort to further educate and prevent future discharges.
- Provide Corrective Action if spill is within Highway District Right-of-Way, use a hazardous spill kit to prevent further discharge
- If the investigation finds no illicit discharge, the investigation results will be documented. In addition, the party that notified the Highway District of a possible discharge will be notified of the investigation results.

It is important to document each discharge response, regardless of whether an actual discharge was determined. At a minimum, an illicit discharge report shall contain the following:

- Time and date of discharge notification
- Time and date that the investigation began/ended
- Time and date the discharge was eliminated (if discovered)
- The responsible party (if discovered)
- Steps taken to eliminate the discharge
- Any environmental impacts

If the discharge was deemed an immediate public threat, document the responding agency and type of discharge (hazardous material, sewage, etc.). Reports shall be obtained from the responding agency.

Illicit Discharges must be reported to EPA by telephone at (206)553-1846 within 24-hours from the time the Permittee becomes aware of the noncompliance (see Permit Section 7.9).

All investigations shall be filed with the Highway District’s Annual Stormwater Report, or equivalent.

**LOCAL AGENCY CONTACT LIST**

<b>AGENCY</b>	<b>OFFICE</b>
LAKES HIGHWAY DISTRICT	(208) 772-7527
POST FALLS HIGHWAY DISTRICT	(208) 765-3717
EAST SIDE HIGHWAY DISTRICT	(208) 765-4714
IDAHO STATE POLICE	(208) 772-6055
KOOTENAI COUNTY SHERRIFF	(208) 446-1300
KOOTENAI COUNTY CODE ENFORCEMENT	(208) 446-1075
IDAHO DEP. OF ENVIRONMENTAL QUALITY	(208)769-1422
PANHANDLE HEALTH	(208) 415-5100
COEUR D’ALENE POLICE DEPARTMENT	(208) 769-2320
HAYDEN LAKE POLICE DEPARTMENT	(208) 772-2161
POST FALLS POLICE DEPARTMENT	(208) 773-3517
SPIRIT LAKE POLICE DEPARTMENT	(208) 623-2701



**RUEN-YEAGER & ASSOCIATES, INC.**  
ENGINEERS ♦ PLANNERS ♦ SURVEYORS

October 5, 2021

Michael Lenz  
Director of Highways  
Post Falls Highway District  
5629 E. Seltice Way  
Post Falls, Idaho 83854

**Re: 2021 Dry Weather Monitoring Report - Post Falls Highway District NPDES MS4  
Project No.: P090104**

Dear Mr. Lenz:

RYA performed dry weather monitoring for 17 outfalls in Post Falls Highway District jurisdiction on July 20, 2021. At that time, field personnel misidentified Outlet #11 and obtained water samples from the intermittent Cedar Creek flow at the inlet to the cross-culvert in the SE corner of the Greensferry / Riverview intersection. The subsequent water analysis report can be used as base line analysis for the District as a marker for private property discharges to the Spokane River. Of note, the E. Coli Bacteria marker was greater than 2400 mg/L. This location was revisited for a second resample and was observed dry on October 4, 2021.

The District recorded MS4 Outfalls were revisited on August 10, 2021, to determine if any outfalls were incorrectly listed as point source discharges and could be removed from the District MS4 Map. During this site visit, it was observed that an additional Outfall must be added to the MS4 Map between the property lines of 11917 & 11879 W Riverview Drive (lower loop). Discharge was observed; however, the pipe culvert outlet is surrounded by a chain link fence, and we have not been successful in contacting the property owner for access. It was also observed and determined that previously recorded Outfalls 14, 15, and 17 should be removed from the District MS4, as there is no point discharge to the Spokane River. The District Map will be revised to reflect the new outfall numbering.

Photos were taken of all outfalls, either at their inlets or their outlets, depending on accessibility or clarity of field conditions.

Sincerely,

**RUEN-YEAGER & ASSOCIATES, INC.**

*Laura Winter, P.E.*

Laura Winter, P.E.



**Outfall #1**



**Outfall #2RT**



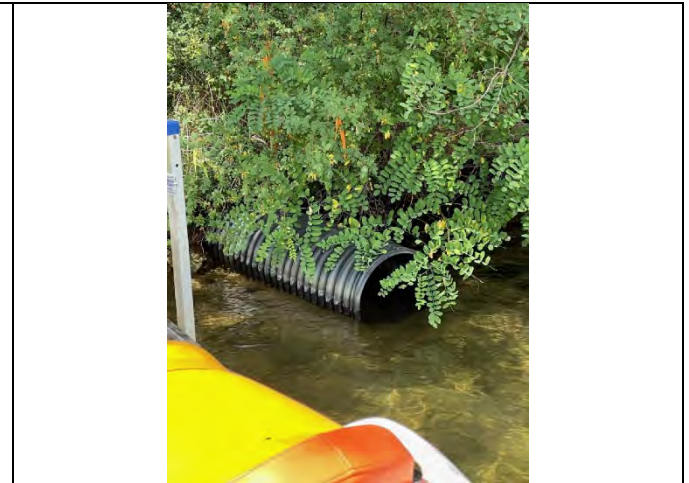
**Inlet to Outfall #3LT**



**Outfall #4**



**Inlet to Outfall #5**



**Outfall #6**



**Inlet to Outfall #7**



**Inlet to Outfall #8**



**Inlet to Outfall #9**



**Inlet to Outfall #10**



**Inlet to Outfall #11**



**Outfall #12**



**Outfall #13**



**Outfall #14**



**Outfall #15**





## **Dry Weather Monitoring Field Report**

2021 Post Falls Highway District MS4 Outfalls

EPA NPDES Permit No. IDS-028207

**Name: Matt Harwood**

**Date: July 20, 2021 & August 10, 2021 & October 4, 2021**

**Temperature (°F) & Weather: 60 AM, 90 PM, Overcast, Wildfire Smoke. 40 AM 70 PM 10/4/21**

**Date of Last Rainfall: Unknown (several weeks) prior to July 20<sup>th</sup> / August 8<sup>th</sup> / September 28<sup>th</sup>**

### **Instructions:**

1. Ensure that it has not rained within 72 hours.
2. Fill out the top portion of this page.
3. Bring the Dry Weather Monitoring Report along with a copy of the MS4 map and a GPS device in case outfall locations are not obvious and need to be located by latitude and longitude.
4. Visit each outfall location shown on the map and make an entry on the Outfall Observations Page of the Dry Weather Monitoring Report.
  - a. If an outfall is not accessible (some may be under water), the outfall should be checked at the first point of accessibility upstream of the outfall location. Note this location in the notes section of the report.
  - b. Take a digital photo of the outfall at the location of monitoring and log the photo number.
  - c. If there is flow present at the outfall, estimate the flow rate and record it on the entry.
  - d. If there is flow present, take a sample of the flow in a sample container obtained from Accurate Testing Labs, LLC. Label the container with the date, time, temperature of the sample, and Outfall Number.
  - e. If there are any unusual deposits (i.e., oily or sediment) or vegetation conditions (i.e., inhibited growth), note it on the entry.
5. Use the notes section to record specific observations and details for any flow observed.
6. Attach any test results and follow up reports to the Dry Weather Monitoring Report.
7. Dry Weather Monitoring Reports will be filed with the Annual Report and posted on the District's web site along with the digital photos of the outfalls.

### Outfall Observations

<b>MAP NO.</b>	<b>PHOTO NO.</b>	<b>EST. FLOW IN GAL/MIN</b>	<b>ODOR, COLOR, OIL SHEEN, TURBIDITY, OR FLOATABLES IN DISCHARGE? (Y/N)</b>	<b>UNUSUAL DEPOSITS OR VEGETATION CONDITIONS? (Y/N)</b>
1	1	0	NA	NO
2	2	0	NA	NO
3	2	0	NA	NO
4	3	0	NA	NO
5	4	0	NA	NO
6	5	0	NA	NO
7	6	0	NA	NO
New 8	7	1 GAL/MIN	NO	Pipe Outlet enclosed in private chain link fence
9 (8)	8	0	NA	NO
10 (9)	9	0	NA	NO
11 (10)	10	0	NA	NO
12 (11)	11	0	NA	NO
13 (12)	12	0	NA	NO
14 (13)	13	0	NA	NO
Old 14	Removed			
Old 15	Removed			
15 (16)	14	0	NA	NO
Old 17	Removed			

## NOTES

Outfall #2: Picture RT. No discharge.

Outfall #3: Picture LT. No discharge.

Outfall #5: Outfall appears to be at the RW line but then extended to the Spokane River by a property owner (?). Unable to gain access to observe pipe outlet on this date but the outlet has been observed submerged in the river in the past. Picture of dry inlet.

Outfall #6: Outfall not accessible on private property on July 20<sup>th</sup>. Able to access partially submerged pipe outlet in the Spokane River on August 10, 2021. There did not appear to be any discharge. Of note, the inlet to this pipe has never been located.

Outfall #7: Outfall not located on private property July 20<sup>th</sup>. Picture taken of dry pipe inlet. Attempt to access outfall on August 10, 2021, unsuccessful. Kootenai County Web Map aerial shows pipe outlet in the Spokane River beside dock at 11917 W Riverview Drive.

New Outfall #8: Outfall not located July 20<sup>th</sup>. Outfall located on August 10, 2021, with observed discharge but within a 72-hour window of a rain event. Pipe outlet discharges into a drainage structure with an unknown outlet. Kootenai County Web Map aerial appears to show possible discharge point in the Spokane River at 11879 W Riverview Drive. Outfall revisited on August 17<sup>th</sup> but Outfall is surrounded by a chain link fence and contact with the property owner has not been established.

Outfall #9 (Previously #8): Could not locate or access outfall on private property on July 20<sup>th</sup>. Picture of dry inlet. Gained access on August 10, 2021 and observed pipe outlet submerged in Spokane River at 11555 W. Riverview Drive. Impossible to tell if there was discharge. Inlet was dry this date.

Outfall #10 (Previously #9): Outfall submerged in Spokane River at boat launch (11253 W. Riverview Drive). Impossible to tell if there was discharge. Picture of dry inlet.

Outfall #11 (Previously #10): Outfall known to be submerged in Spokane River on private property. This Outfall has been observed previously at 11075 W. Riverview. Could not gain access this date. Picture of dry inlet.

Outfall #12 (Previously #11): Incorrect cross-culvert thought to be Outfall. Flow sampled in intermittent Cedar Creek at SE W. Riverview/Greensferry intersection. Estimated 1 Gallon/Minute flow with temperature of samples taken at 10:30AM at 60.5 F. Samples delivered to Accurate Testing Labs at 11:45 AM July 20, 2021. This location observed dry on October 4, 2021.

Actual Outfall #12 (Previously #11) observed dry on August 10, 2021. This pipe outlet crosses Greensferry Road diagonally just south of the W. Riverview intersection.

Previous Outfall #14: Discussion with Engineer and site visit August 10, 2021, determined that the existing cross culvert is a conveyance of a natural ravine, not an Outfall. This pipe inlet will be removed from the PFHD MS4 Outfall Map.

Previous Outfall #15: Same pipe as #14. This pipe outlet will be removed from the PFHD MS4 Outfall Map.

Outfall #15 (Previously #16): Incorrect pipe outlet observed on July 20<sup>th</sup>. Correct pipe outlet observed August 10, 2021. No discharge observed.

Previous Outfall #17: Discussion with Engineer and site visit August 10, 2021, determined that the existing ditch line ends well in advance of any possible discharge into the Spokane River. This location will be removed from the PFHD MS4 Outfall Map.



**Outfall #1**



**Outfall #2RT**



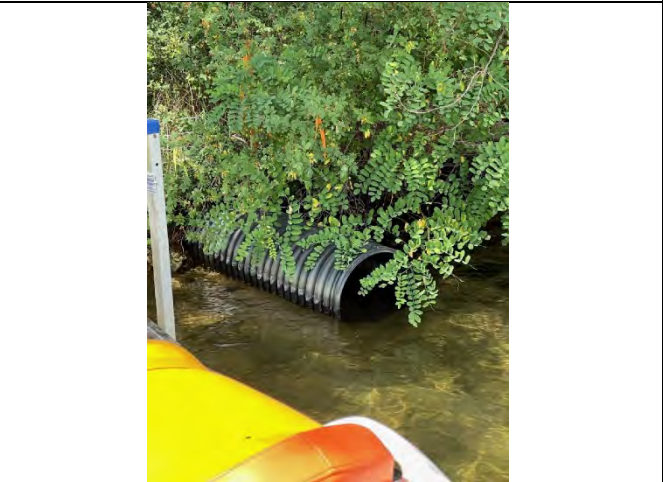
**Outfall #3LT**



**Outfall #4**



**Inlet to Outfall #5**



**Outfall #6**



**Inlet to Outfall #7**



**Inlet to Outfall #8**



**Inlet to Outfall #9**



**Outfall #10**



**Inlet to Outfall #11**



**Outfall #12**



Jul 20, 2021 11:23:46 AM  
3055 East Rivercrest Drive  
Post Falls  
Kootenai County  
Idaho

**Outfall #13**



Jul 20, 2021 11:23:59 AM  
3055 East Rivercrest Drive  
Post Falls  
Kootenai County  
Idaho

**Outfall #14**



Aug 10, 2021 3:14:11 PM

**Outfall #15**

## **5.5 Education, Outreach, Public Involvement**



## 5.5 Education, Outreach, and Public Involvement

To educate and involve members of the public to learn about pollutants in storm water and similarly significant issues Post Falls Highway District must conduct, or contract with other entities to conduct, an ongoing education, outreach, and public involvement program. The Highway Districts must also comply with applicable State and local public notice requirements when implementing any public involvement activities.

Within one year of the Permit effective date, LHD, PFHD, and ESHD must, at a minimum:

- ✓ Select at least one audience and focus its efforts on conveying relevant messages
  - Distribute and/or offer at least eight (8) educational messages or activities over the permit term to selected audience(s)
  - Begin to assess, and track, activities to gauge the audience's understanding of the relevant messages and adoption of appropriate behaviors.
- ✓ Target specific educational material to the construction/engineering/design community regarding construction site runoff control and permanent storm water controls.
- ✓ Maintain and advertise a publicly accessible website to provide all relevant SWMP materials.

Post Falls Highway District will track the Public Education and Outreach efforts during the permit term and provide reports in the Annual Reports. The permit requires at least 8 educational messages or activities during the permit term. The permit requires an effort to assess the understanding of the relevant messages and adoption of appropriate behaviors by the target audience.

The North Idaho Highway Districts have already established a public education and outreach program during the last permit term, and they will continue to build upon through this permit term, depending on available opportunities that have been unpredictable in the last two years due to Covid restrictions. The target audiences have been children and families with the following outreach efforts:

- Earth Day – We present Stormwater Pollution and Solution to families who attend the Earth Day event (last one held was in 2019). We have developed a stormwater questionnaire for attendees to our booth to fill out, with their name then entered for a drawing for a large flower basket. This incentive encouraged attendees to fill out the questionnaire, in which we will track the answers to see if our public education efforts are creating greater understanding. We anticipate the next Earth Day event to occur in April of 2022. (See attachment for our previous efforts, questionnaire, and results, which will be the base to assess future events).
- Silverwood Physics & Science Day – Public Education and Outreach to this event is typically to middle school and high school students. We provide a stormwater runoff demonstration and discuss with students of the things they can do to reduce stormwater. The last Silverwood Physics and Science Day was in 2019 and we anticipate the next event to be in May 2022.
- Ramsey Elementary Field Trip – We make presentations to eight classes over two days to Ramsey Elementary fifth grade students during their field trip to the City of Coeur d'Alene Water Treatment Plant. We have tried several presentation techniques, both inside a classroom with a presentation and questionnaire, and outside with actual demonstrations, to provide a public education about stormwater pollution prevention and things they can do to help. The questionnaire from 2019 will provide a base to see if students in general are picking up on the message. (See attachment for our previous efforts, questionnaire, and results which will be the

base to assess future events. As well as information concerning the 2021 event).

- Post Falls Highway District mails out a brochure to residents who live in the MS4 boundary. The brochure displays stormwater pollution prevention best management practices that can be implemented by all homeowners. (See brochure mailer in attachments).
- In 2015, Post Falls Highway District along with Lakes Highway District and East Side Highway District, wrote a letter of support and agreed to co-fund a “Learning Station” for the University of Idaho grant application to develop the “Cleaner. Water. Faster: Bi-State Interpretive Clean Water Trail” Interpretive Trail for the four corners area in Coeur d’Alene. The University of Idaho was successful in securing the grant. The design of the “Learning Station” was completed in 2018 and was installed by the City of Coeur d’Alene in the spring of 2019. The “Learning Station” for the Storm Water Pollution Prevention Interpretive Trail Project will be maintained as a cooperative effort with Lakes Highway District, Post Falls Highway District, and East Side Highway District (see picture of Learning Station in attached).
- The Highway Districts were approached with an opportunity to develop a PSA through the University of Idaho’s “Cleaner. Water. Faster.” grant. On September 19, 2017, the video was filmed and in October of 2018 the video was completed and published on YouTube and linked by the University of Idaho website. The video has also been posted to the Lakes Highway District and Post Falls Highway District website.
- To supplement our Public Outreach Stormwater Demonstrations, the three Highway Districts along with the City of Coeur d’Alene designed and produced two large banner displays for stormwater and pollution prevention education purposes (see banners in attachment).

#### *Planned Activities for 2022*

The North Idaho Highway Districts plan to perform the following Public Outreach and Education during the 2022 calendar year:

- Earth Day Stormwater Pollution Prevention Presentation and questionnaire
- Ramsey Elementary Field Trip Stormwater Pollution Prevention Presentation
- Silverwood Physics and Science Day Stormwater Pollution Prevention Presentation
- Stormwater Pollution Prevention Brochure Mailout
- Seep Field Guides distributed to all Contractors and Permit Applicants
- Continued PSA’s on their website
- Continued support of the Cleaner.Water.Faster. Interpretive Sign
- Banner display in various public locations (City of Coeur d’Alene Library and City Hall).

## 5.5 Attachments

# Earth Day Celebration 2019

April 28, 2019



Earth Day Presentation with New Banners “The Pollution” and “The Solution”,  
The Stormwater Runoff Demonstration, and Stormwater Plinko Game.



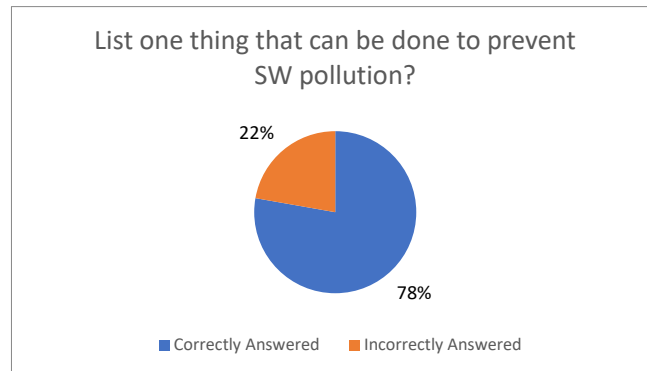
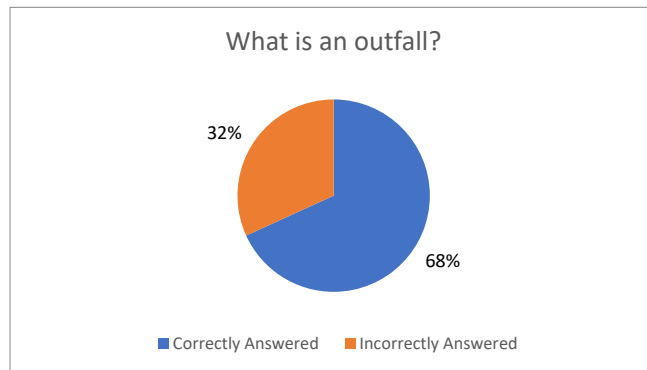
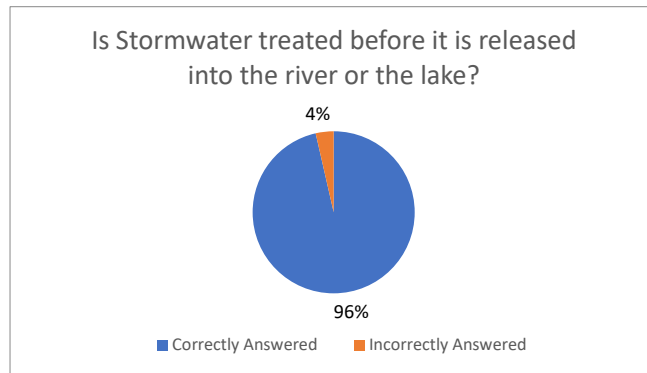
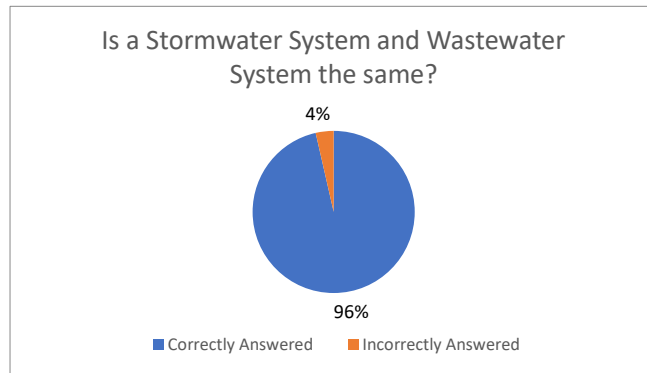
Earth Day Questionnaire with Flower Drawing



Winner of Flower Basket Drawing

### Earth Day 2019 Questionnaire Results

The goal with this survey was to determine the current public understanding of storm water (SW) and then use this information to compare to future years.





**Tell Us.....  
What do YOU know  
about Storm Water  
to enter the Drawing !!**

Is a storm water system and a wastewater system the same?  Yes  No

Is storm water treated before it is released into the river or the lake?  Yes  No

What is an outfall?

?

List one thing you can do to help prevent storm water pollution?

Do not let oil spills leak into the storm system. Use Kitty litter to absorb the oil

Name: MARY ANN Landers

Phone: 208-661-4113

(need not be present to win)



**Tell Us.....**  
**What do YOU know**  
**about Storm Water**  
**to enter the Drawing !!**

Is a storm water system and a wastewater system the same? **Yes or No**

Yes or No

Is storm water treated before it is released into the river or the lake? **Yes or No**

Yes or No

What is an outfall?

where garbage etc. discharges into lake through a drain/tube

List one thing you can do to help prevent storm water pollution?

plant more grass

Name: Zosha

Phone: 6994411

(need not be present to win)



**Tell Us.....  
 What do YOU know  
 about Storm Water  
 to enter the Drawing !!**

Is a storm water system and a wastewater system the same?  Yes or  No

Is storm water treated before it is released into the river or the lake?  Yes or  No

What is an outfall?

water dumps out of  
 Culvert

List one thing you can do to help prevent storm water pollution?

Don't wash your car

Name: Misha Seguin

Phone: 510 520 9787

(need not be present to win)





**Tell Us.....  
What do YOU know  
about Storm Water  
to enter the Drawing !!**

Is a storm water system and a wastewater system the same?  Yes or  No

Is storm water treated before it is released into the river or the lake?  Yes or  No

What is an outfall?

The point where water discharges before it goes into the river or lake

List one thing you can do to help prevent storm water pollution?

Plant grass

Name: Melissa Henbest

Phone: 208-660-8257

(need not be present to win)



**Tell Us.....**  
**What do YOU know**  
**about Storm Water**  
**to enter the Drawing !!**

Is a storm water system and a wastewater system the same? **Yes or No**

Yes or **No**

Is storm water treated before it is released into the river or the lake? **Yes or No**

Yes or **No**

What is an outfall?

[Empty text box for answer]

List one thing you can do to help prevent storm water pollution?

Clean up oil spills

Name: Abby Fremoux

Phone: 425-770-2682

(need not be present to win)



**Tell Us.....**  
**What do YOU know**  
**about Storm Water**  
**to enter the Drawing !!**

Is a storm water system and a wastewater system the same? **Yes or No**

**No**

Is storm water treated before it is released into the river or the lake? **Yes or No**

**No**

What is an outfall?

Water treatment overflows

List one thing you can do to help prevent storm water pollution?

Do not wash car and let soap etc flow into drains

Name: Barbara Fillmore

Phone: 208 964-0088

(need not be present to win)



**Tell Us.....  
What do YOU know  
about Storm Water  
to enter the Drawing !!**

Is a storm water system and a wastewater system the same?  Yes or No

Is storm water treated before it is released into the river or the lake?  Yes or No

What is an outfall?

The point where water from gutters enters the stream

List one thing you can do to help prevent storm water pollution?

Don't put trash in the gutter

Name: Fawn

Phone: 208 704-1995

(need not be present to win)



**Tell Us.....**  
**What do YOU know**  
**about Storm Water**  
**to enter the Drawing !!**

Is a storm water system and a wastewater system the same?  Yes  No

Is storm water treated before it is released into the river or the lake?  Yes  No

What is an outfall?

*Point where water enters river etc from storm drainage*

List one thing you can do to help prevent storm water pollution?

*Do not Sanitize lawn*

Name: *Russ Starnel*  
 Phone: *208 771 2422*  
 (need not be present to win)



**Tell Us.....  
 What do YOU know  
 about Storm Water  
 to enter the Drawing !!**

Is a storm water system and a wastewater system the same? **Yes or No**

Is storm water treated before it is released into the river or the lake? **Yes or No**

What is an outfall?

[Empty text box for answer]

List one thing you can do to help prevent storm water pollution?

*Pick up PET WASTE*

Name: *Annalise Turner*  
 Phone: *(208) 619-9392*

(need not be present to win)



**Tell Us.....**  
**What do YOU know**  
**about Storm Water**  
**to enter the Drawing !!**

Is a storm water system and a wastewater system the same?  Yes  No

Is storm water treated before it is released into the river or the lake?  Yes  No

What is an outfall?

? An area to store snow or other debris?

List one thing you can do to help prevent storm water pollution?

Don't use fertilizers.

Name: Lisa Schaff

Phone: 208 610 7123

(need not be present to win)



**Tell Us.....**  
**What do YOU know**  
**about Storm Water**  
**to enter the Drawing !!**

Is a storm water system and a wastewater system the same?  Yes or  No

Is storm water treated before it is released into the river or the lake?  Yes or  No

What is an outfall?

[Empty text box for answer]

List one thing you can do to help prevent storm water pollution?

*don't flush old prescriptions*

Name: Kalco Brockhoff

Phone: 208 755-7786

(need not be present to win)





**Tell Us.....**  
**What do YOU know**  
**about Storm Water**  
**to enter the Drawing !!**

Is a storm water system and a wastewater system the same?

Yes or No

Is storm water treated before it is released into the river or the lake?

Yes or No

What is an outfall?

Where the storm water drains out

List one thing you can do to help prevent storm water pollution?

Clean your household waste properly.

Name: Roamer Waters

Phone: 208 215 8148

(need not be present to win)



**Tell Us.....**  
**What do YOU know**  
**about Storm Water**  
**to enter the Drawing !!**

Is a storm water system and a wastewater system the same?  Yes or  No

Is storm water treated before it is released into the river or the lake?  Yes or  No

What is an outfall?

Gross stuff  
to River

List one thing you can do to help prevent storm water pollution?

Garbage placed  
appropriately

Name: Michael + Winona

Phone: 208-699-7106

(need not be present to win)



**Tell Us.....**  
**What do YOU know**  
**about Storm Water**  
**to enter the Drawing !!**

Is a storm water system and a wastewater system the same? **Yes or No**

No

Is storm water treated before it is released into the river or the lake? **Yes or No**

No

What is an outfall?

Where stormwater is ~~is~~ flows into the lake

List one thing you can do to help prevent storm water pollution?

Use environmentally friendly fertilizer

Name: Sadie Sundahl

Phone: 208-625-7135

(need not be present to win)



**Tell Us.....  
 What do YOU know  
 about Storm Water  
 to enter the Drawing !!**

Is a storm water system and a wastewater system the same? **Yes or No**

Is storm water treated before it is released into the river or the lake? **Yes or No**

What is an outfall?

output into the US waterways

List one thing you can do to help prevent storm water pollution?

Wash car on a lawn not in the driveway

Name: Joan Atkins

Phone: 208-340-8586

(need not be present to win)



**Tell Us.....**  
**What do YOU know**  
**about Storm Water**  
**to enter the Drawing !!**

Is a storm water system and a wastewater system the same? **Yes or No**

Yes or **No**

Is storm water treated before it is released into the river or the lake? **Yes or No**

Yes or **No**

What is an outfall?

AN AREA WHERE STORMWATER NATURALLY DRAINS

List one thing you can do to help prevent storm water pollution?

DONT POUR CHEMICALS DOWN THE DRAIN!

Name: NASH

Phone: 208 416 9266

(need not be present to win)



**Tell Us.....**  
**What do YOU know**  
**about Storm Water**  
**to enter the Drawing !!**

Is a storm water system and a wastewater system the same? **Yes or No**

No

Is storm water treated before it is released into the river or the lake? **Yes or No**

No

What is an outfall?

over flow

List one thing you can do to help prevent storm water pollution?

Keep storm drains open

Name:

Kathy

Phone:

208 627 3523

(need not be present to win)



**Tell Us.....**  
**What do YOU know**  
**about Storm Water**  
**to enter the Drawing !!**

Is a storm water system and a wastewater system the same?  Yes or  No

Is storm water treated before it is released into the river or the lake?  Yes or  No

What is an outfall?

*The end of  
 a pipe that discharges liquid.*

List one thing you can do to help prevent storm water pollution?

*Repair oil leaks on car.*

Name: *Elaine Morpen*

Phone: *(208) 664-2538*

(need not be present to win)



**Tell Us.....**  
**What do YOU know**  
**about Storm Water**  
**to enter the Drawing !!**

Is a storm water system and a wastewater system the same?  Yes  No

Is storm water treated before it is released into the river or the lake?  Yes  No

What is an outfall?

Where the stormwater enters the lake, river

List one thing you can do to help prevent storm water pollution?

Don't discharge chemicals in to the street.

Name: Robert Nelson

Phone: 208 772-1868

(need not be present to win)





**Tell Us.....  
 What do YOU know  
 about Storm Water  
 to enter the Drawing !!**

Is a storm water system and a wastewater system the same?

Yes or No

Is storm water treated before it is released into the river or the lake?

Yes or No

What is an outfall?

??  
--

List one thing you can do to help prevent storm water pollution?

No dumpily trash  
 storm drain

Name: Molly Jacobs

Phone: 208-699-3632

(need not be present to win)



**Tell Us.....**  
**What do YOU know**  
**about Storm Water**  
**to enter the Drawing !!**

Is a storm water system and a wastewater system the same?  Yes or  No

Is storm water treated before it is released into the river or the lake?  Yes or  No

What is an outfall?

*Flooding?*

List one thing you can do to help prevent storm water pollution?

*Not wash cars on the road or pour pollutants on road or driveways*

Name: Merritt Mitchell

Phone: 208-661-0964

(need not be present to win)



**Tell Us.....**  
**What do YOU know**  
**about Storm Water**  
**to enter the Drawing !!**

Is a storm water system and a wastewater system the same? **Yes or No**

Yes or No

Is storm water treated before it is released into the river or the lake? **Yes or No**

Yes or No

What is an outfall?

collects water from storms

List one thing you can do to help prevent storm water pollution?

[Empty text box for answer]

Name: Jacey Brockhoff

Phone: 208 661 5514

(need not be present to win)



**Tell Us.....  
What do YOU know  
about Storm Water  
to enter the Drawing !!**

Is a storm water system and a wastewater system the same? **Yes or No**

No

Is storm water treated before it is released into the river or the lake? **Yes or No**

No

What is an outfall?

DRAIN INTO LAKE OR STREAM

List one thing you can do to help prevent storm water pollution?

Don't wash your car in the driveway!

Name:

Vickie Locken

Phone:

208 660 0699

(need not be present to win)



**Tell Us.....  
What do YOU know  
about Storm Water  
to enter the Drawing !!**

Is a storm water system and a wastewater system the same? **Yes or No**

No

Is storm water treated before it is released into the river or the lake? **Yes or No**

No

What is an outfall?

When the stormwater meets the freshwater.

List one thing you can do to help prevent storm water pollution?

Pick up trash

Name: Iran

Phone: 208-755-3653

(need not be present to win)



**Tell Us.....**  
**What do YOU know**  
**about Storm Water**  
**to enter the Drawing !!**

Is a storm water system and a wastewater system the same? **Yes or No**

No

Is storm water treated before it is released into the river or the lake? **Yes or No**

No

What is an outfall?

runoff from storms

List one thing you can do to help prevent storm water pollution?

~~reduce~~ pick up pet waste

Name: Megan Loomis

Phone: (208) 755-3653

(need not be present to win)



**Tell Us.....  
 What do YOU know  
 about Storm Water  
 to enter the Drawing !!**

Is a storm water system and a wastewater system  
 the same? **Yes or No**

Is storm water treated before it is released into  
 the river or the lake? **Yes or No**

What is an outfall?

The large pipe(s) where  
 storm water reaches our  
 lake/river.

List one thing you can do to help prevent storm  
 water pollution?

Wash my truck on  
 the lawn!

Name: Jamie Esler

Phone: 277-8432

(need not be present to win)



**Tell Us.....**

**What do YOU know  
about Storm Water  
to enter the Drawing !!**

Is a storm water system and a wastewater system  
the same?  Yes or  No

Is storm water treated before it is released into  
the river or the lake?  Yes or  No

What is an outfall?

Where water dumps  
into surface water (lake/  
river)

List one thing you can do to help prevent storm  
water pollution?

don't over-fertilize

Name: Sarah McCracken  
Phone: 208.651.3131  
(need not be present to win)





**Tell Us.....  
 What do YOU know  
 about Storm Water  
 to enter the Drawing !!**

Is a storm water system and a wastewater system the same? **Yes or No**

**No**

Is storm water treated before it is released into the river or the lake? **Yes or No**

**No**

What is an outfall?

[Empty text box for answer]

List one thing you can do to help prevent storm water pollution?

*Wash car on lawn*

Name: *Audra Holm*

Phone: *208 667 7306*

(need not be present to win)

*Winner*

## Silverwood Physics & Science Days 2019

May 22 & 23, 2019



Silverwood Physics & Science Day Presentations with New Banners “The Pollution” and “The Solution”,  
The Stormwater Runoff Demonstration, and Stormwater Plinko Game.







## 2021 Ramsey Elementary School Field Trip Storm Water Presentations

Lakes Highway District, Post Falls Highway District, and East Side Highway District meet their Public Education and Outreach requirements through a joint effort outreach. During the 2021 Permit year, the following Public Education and Outreach was performed:

On May 18 and May 20, 2021 Laura Winter from Ruen-Yeager & Associates took part in a Stormwater Pollution Prevention School Demonstration to Ramsey Elementary fifth-graders. There were eight rotating classes that took part in a demonstration that included a discussion about where stormwater goes after it enters a catch basin, the fact it is not treated, location of outfalls and drainage basins, and ways to prevent stormwater pollution. They were shown and discussed “The Pollution” and “The Solution” banners developed and funded for these learning opportunities. The students were then given a demonstration of a “vacuum truck” and a Pipe Camera demonstration. We handed out sunglasses to the students that had printed on the earpiece “Clean Water is Cool”. Approximately 160 students took part in this demonstration.

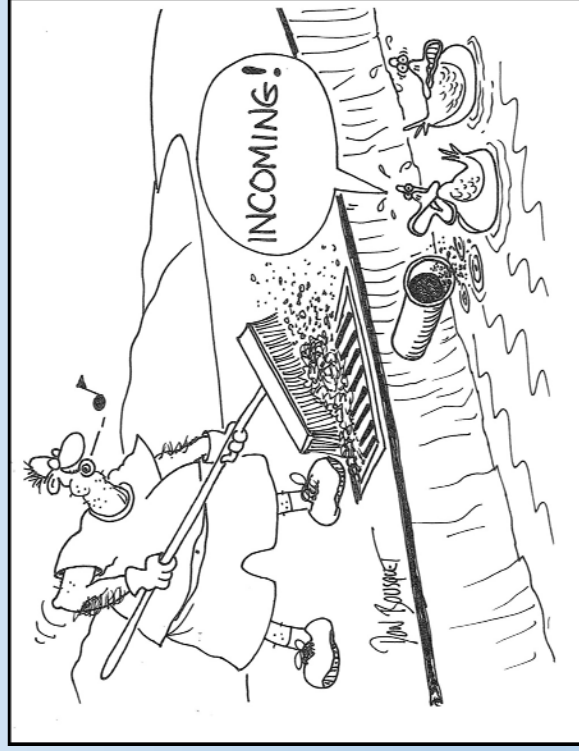


## *Did you know?*

The United States Environmental Protection Agency regulates the Post Falls Highway District's stormwater discharges through a permit.

The permit requires the District to inform the public about stormwater pollution and how to prevent it.

The Permit also requires the District to monitor discharges from roadside ditches and storm drains.



For more information, visit [www.postfallshd.com](http://www.postfallshd.com)



**Post Falls Highway District**  
5629 E. Seltice Way  
Post Falls, Idaho 83854

## HOW CAN YOU HELP PREVENT STORMWATER POLLUTION?

As stormwater flows over driveways, lawns, and roadways, it picks up debris, chemicals, dirt, and other pollutants. Polluted runoff is the nation's greatest threat to clean water.



***STORMWATER  
FROM YOUR AREA  
FLOWS INTO THE  
SPOKANE RIVER  
UNTREATED.***

By practicing healthy household habits, homeowners can keep common pollutants like pesticides, pet waste, grass clippings, and automotive fluids off the ground and out of stormwater.



## HEALTHY HOUSEHOLD HABITS FOR CLEAN WATER

### Vehicle and Garage

- Use a commercial car wash or wash your car on your lawn to minimize the amount of dirty, soapy water flowing into the river.
- Check your car, boat, and lawn equipment for leaks and spills. Clean up spilled fluids with an absorbent material like kitty litter or sand, and don't rinse the spills into a storm drain.
- Recycle used oil and other automotive fluids. Don't dump these chemicals down the storm drain or dispose of them in your trash. Visit [kcgov.us/departments/solid waste](http://kcgov.us/departments/solid%20waste) or call 208-446-1430 for disposal information.



### Lawn and Garden

- Use pesticides and fertilizers sparingly. Avoid application before rain.
- Sweep up yard debris, rather than hosing down areas.
- Don't overwater your lawn.

### Home Improvement

- Sweep up and properly dispose of construction debris such as concrete and mortar.
- Use hazardous substances like paints, solvents, and cautiously. Clean up spills immediately, and dispose of the waste safely.
- Clean paint brushes in a sink, not outdoors.



### Pet Care

- When walking your pet, remember to pick up the waste and dispose of it properly.

HUMPHREY, JEFFERY C  
OR CURRENT RESIDENT  
307 S LOWER CRYSTAL BAY RD  
POST FALLS ID 83854  
Undeliverable – No mail receptacle

CARLSON, NATALIE L  
OR CURRENT RESIDENT  
459 S LOWER CRYSTAL BAY RD  
POST FALLS ID 83854

MCKITTRICK, WALLIS  
OR CURRENT RESIDENT  
500 S LOWER CRYSTAL BAY RD  
POST FALLS, ID 83854  
Undeliverable as addressed, unable to forward

PALMER, ANN M  
OR CURRENT RESIDENT  
11381 W CRYSTAL BAY RD  
POST FALLS ID NI83854

BARDIN, DAVID  
OR CURRENT RESIDENT  
246 S LOWER CRYSTAL BAY RD  
POST FALLS ID 83854

STOHL, PETER  
OR CURRENT RESIDENT  
10982 W RIVERVIEW DR  
POST FALLS ID 83854

TOYNBEE, JAMES P  
OR CURRENT RESIDENT  
11024 W RIVERVIEW DR  
POST FALLS ID 83854

CRAIG PROPERTY MANAGEMENT  
LLC  
OR CURRENT RESIDENT  
12021 W RIVERVIEW DR  
POST FALLS ID 83854

DECKER FAMILY TRUST  
OR CURRENT RESIDENT  
11879 W RIVERVIEW DR  
POST FALLS ID 83854  
Undeliverable as addressed, unable to forward

JONES, CAMERON  
OR CURRENT RESIDENT  
11102 W RIVERVIEW DR  
POST FALLS, ID 83854

SCHAEFER, RICHARD JAMES  
OR CURRENT RESIDENT  
311 S LOWER CRYSTAL BAY RD  
POST FALLS ID 83854

CAYKO, ROD  
OR CURRENT RESIDENT  
475 S LOWER CRYSTAL BAY RD  
POST FALLS, ID 83854

GEORGE, JAMES C  
OR CURRENT RESIDENT  
11309 W CRYSTAL BAY RD  
POST FALLS ID 83854

SKIPPER, JOANN  
OR CURRENT RESIDENT  
11417 W CRYSTAL BAY RD  
POST FALLS ID 83854

WEST, LAURENCE J  
OR CURRENT RESIDENT  
547 S LOWER CRYSTAL BAY RD  
POST FALLS, ID 83854

ZHONG, RUINIAN  
OR CURRENT RESIDENT  
PO BOX 3115  
POST FALLS, ID 83877

DELAROSA, ALIUS  
OR CURRENT RESIDENT  
10967 W RIVERVIEW DR  
POST FALLS, ID 83854  
Undeliverable as addressed, unable to forward

GUGLIELMO, GARY  
OR CURRENT RESIDENT  
11947 W RIVERVIEW DR  
POST FALLS ID 83854

ROCCA, JAMES  
OR CURRENT RESIDENT  
11843 W RIVERVIEW DR  
POST FALLS ID 83854

NELSON, MICHAEL R  
OR CURRENT RESIDENT  
11755 W RIVERVIEW DR  
POST FALLS, ID 83854  
Undeliverable as addressed, unable to forward

SUSAN LONGDEN SURVIVORS  
TRUST  
OR CURRENT RESIDENT  
361 S LOWER CRYSTAL BAY RD  
POST FALLS, ID 83854

HOAG, CHARLES  
OR CURRENT RESIDENT  
527 S LOWER CRYSTAL BAY RD  
POST FALLS ID 83854

MORRIS, RICHARD B  
OR CURRENT RESIDENT  
11351 W CRYSTAL BAY RD  
POST FALLS ID 83854

LYON, JERRY C  
OR CURRENT RESIDENT  
11142 W RIVERVIEW DR  
POST FALLS ID 83854

BOWEN, AIMEE  
OR CURRENT RESIDENT  
11074 W RIVERVIEW DR  
POST FALLS ID 83854

LEWIS, J  
OR CURRENT RESIDENT  
11124 W RIVERVIEW DR  
POST FALLS ID 83854

HARMON FAMILY TRUST  
OR CURRENT RESIDENT  
11075 W RIVERVIEW DR  
POST FALLS ID 83854

METCALF, KEITH A  
OR CURRENT RESIDENT  
11917 W RIVERVIEW DR  
POST FALLS, ID 83854

STIGER, ROBERT R  
OR CURRENT RESIDENT  
11831 W RIVERVIEW DR  
POST FALLS ID 83854

RIVERVIEW GROUP LLC  
OR CURRENT RESIDENT  
11745 W RIVERVIEW DR  
POST FALLS, ID 83854



FOWLER, GARRY  
OR CURRENT RESIDENT  
11717 W RIVERVIEW DR  
POST FALLS ID 83854

HILL, DEBBIE S  
OR CURRENT RESIDENT  
11663 W RIVERVIEW DR  
POST FALLS, ID 83854

JARA, FRANCISCO  
OR CURRENT RESIDENT  
11637 W RIVERVIEW DR  
POST FALLS, ID 83854

PHILMAR CORPORATION  
OR CURRENT RESIDENT  
11607 W RIVERVIEW DR  
POST FALLS ID 83854

DREVES, HEIDY L  
OR CURRENT RESIDENT  
11593 W RIVERVIEW DR  
POST FALLS ID 83854

GALLAGHER, KIMBERLI C  
OR CURRENT RESIDENT  
11573 N RIVERVIEW DR  
POST FALLS ID 83854

SJF SPRING CREEK INVESTMENTS  
LLC  
OR CURRENT RESIDENT  
11555 W RIVERVIEW DR  
POST FALLS, ID 83854

PAULL, SHARON  
OR CURRENT RESIDENT  
11523 W RIVERVIEW DR  
POST FALLS, ID 83854

ROBERTSON, MARK S  
OR CURRENT RESIDENT  
11483 W RIVERVIEW DR  
POST FALLS ID 83854

CJKS & CJ TRUST  
OR CURRENT RESIDENT  
11463 W RIVERVIEW DR  
POST FALLS ID 83854

WILLIAMS, MICHAEL PAUL  
OR CURRENT RESIDENT  
11437 W RIVERVIEW DR  
POST FALLS, ID 83854

ROSTIE, CHRISTOPHER  
OR CURRENT RESIDENT  
11385 W RIVERVIEW DR  
POST FALLS ID 83854

MELTON, JUDSON  
OR CURRENT RESIDENT  
11361 W RIVERVIEW DR  
POST FALLS ID 83854

TEFFT, LURENE M  
OR CURRENT RESIDENT  
11309 W RIVERVIEW DR  
POST FALLS ID 83854

SUE KINCHEN FAMILY TRUST  
OR CURRENT RESIDENT  
11255 W RIVERVIEW DR  
POST FALLS, ID 83854  
Undeliverable as addressed, unable to  
forward

OTTO, MERRILL L  
OR CURRENT RESIDENT  
11251 W RIVERVIEW DR  
POST FALLS, ID 83854  
Undeliverable – No mail receptacle

BARTON, TIMOTHY W  
OR CURRENT RESIDENT  
11013 W RIVERVIEW DR  
POST FALLS ID 83854

RON AND KATHY ANDERSON  
FAMILY TRUST  
OR CURRENT RESIDENT  
11189 W RIVERVIEW DR  
POST FALLS ID 83854

SILBERBERGER, CHARLES  
OR CURRENT RESIDENT  
11171 W RIVERVIEW DR  
POST FALLS ID 83854

DE LA ROSA, ABEL  
OR CURRENT RESIDENT  
11151 W RIVERVIEW DR  
POST FALLS ID 83854  
Undeliverable as addressed, unable to  
forward

NECHANICKY, ROBERT  
OR CURRENT RESIDENT  
11113 W RIVERVIEW DR  
POST FALLS ID 83854

MYER, DON  
OR CURRENT RESIDENT  
638 S MINNALOOSA LN  
POST FALLS, ID 83854

NAGRONE, DONNA  
OR CURRENT RESIDENT  
788 S MINNALOOSA LN  
POST FALLS, ID 83854

BROOKS, FRANK D  
OR CURRENT RESIDENT  
13624 W RIVERVIEW DR  
POST FALLS, ID 83854

NEWMAN, LISA L  
OR CURRENT RESIDENT  
365 S SIMONSEN RD  
POST FALLS, ID 83854

GUNNING, JOYCE N  
OR CURRENT RESIDENT  
12059 W RIVERVIEW DR  
POST FALLS, ID 83854  
Undeliverable – No mail receptacle

BIG LAKE VENTURES LLC  
OR CURRENT RESIDENT  
12053 W RIVERVIEW DR  
POST FALLS, ID 83854

VIETZKE, AMBER L  
OR CURRENT RESIDENT  
255 S LOWER CRYSTAL BAY RD  
POST FALLS, ID 83854  
Undeliverable – No mail receptacle

WIKOFF, ROBERT L  
OR CURRENT RESIDENT  
229 S LOWER CRYSTAL BAY RD  
POST FALLS, ID 83854

MCQUINNEY-VOIGT, DEIDRE  
OR CURRENT RESIDENT  
225 S LOWER CRYSTAL BAY RD  
POST FALLS, ID 83854

NICHOLS, ZACHARIAH H  
OR CURRENT RESIDENT  
11448 W CRYSTAL BAY RD  
POST FALLS, ID 83854

WEMHOFF, JASON  
OR CURRENT RESIDENT  
1288 S GREENSFERRY RD  
COEUR D ALENE, ID 83814

BOWER, CLINTON  
OR CURRENT RESIDENT  
3019 E RIVERCREST DR  
POST FALLS, ID 83854

CARLSON, WILLIAM C  
OR CURRENT RESIDENT  
3055 E RIVERCREST DR  
POST FALLS, ID 83854

DMSV RIVERCREST LLC  
OR CURRENT RESIDENT  
3010 E RIVERCREST DR  
POST FALLS, ID 83854

CHESNUT, TANYA  
OR CURRENT RESIDENT  
3204 E RIVERCREST DR  
POST FALLS, ID 83854

CAMERON, MICHAEL  
OR CURRENT RESIDENT  
3176 E RIVERCREST DR  
POST FALLS, ID 83854

ELOE, DANIEL O  
OR CURRENT RESIDENT  
3217 E RIVERCREST DR  
POST FALLS, ID 83854

CLARK, DAVID  
OR CURRENT RESIDENT  
3153 E RIVERCREST DR  
POST FALLS, ID 83854

SHAHSVARI, SHAHLA  
OR CURRENT RESIDENT  
3120 E PONDEROSA BLVD  
POST FALLS, ID 83854

GILBERT, GARY G  
OR CURRENT RESIDENT  
3080 E PONDEROSA BLVD  
POST FALLS, ID 83854

FULTON, AUDREY D  
OR CURRENT RESIDENT  
3072 E RIVERCREST DR  
POST FALLS, ID 83854

COOMES, TIMOTHY J  
OR CURRENT RESIDENT  
8813 W RIVERVIEW DR  
COEUR D ALENE, ID 83814  
Undeliverable – No mail receptacle

HOLLENBACK, CHERYL L  
OR CURRENT RESIDENT  
8811 W RIVERVIEW DR  
COEUR D ALENE, ID 83814

THORPE, JAMES  
OR CURRENT RESIDENT  
7399 W OTTER BAY RD  
COEUR D ALENE, ID 83814  
Undeliverable – No mail receptacle

BLAKE, CHRISTOPHER M.  
OR CURRENT RESIDENT  
7043 W HARBOR DR  
COEUR D ALENE, ID 83814  
Undeliverable – Vacant, Unable to  
Forward

# Stormwater Runoff

## DECREASING POLLUTION THROUGH ROAD MAINTENANCE

### EFFORTS TO KEEP STORMWATER CLEAN

#### ENVIRONMENTAL IMPACTS

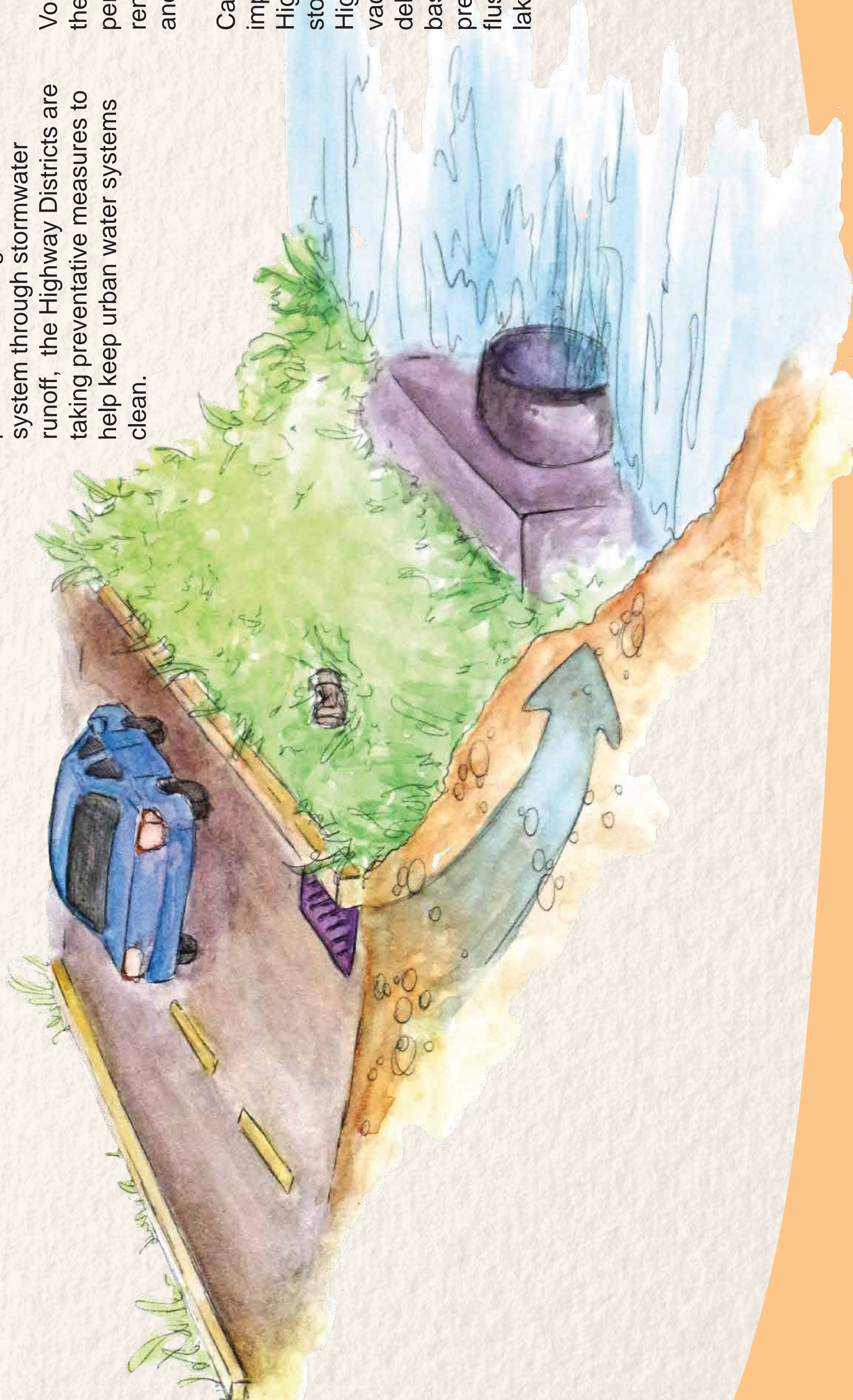
The Highway Districts work year round using multiple methods to keep roadways, storm systems, and ditches clean from pollutants. By decreasing the amount of pollution entering the water system through stormwater runoff, the Highway Districts are taking preventative measures to help keep urban water systems clean.

#### MINIMIZING POLLUTION

The Highway Districts street sweep their jurisdictions several times a year to remove road surface debris and other pollutants that could end up in stormwater runoff.

Volunteers and staff members of the Highway Districts regularly perform litter control pick up to remove debris from the roads and surrounding areas.

Catch basin cleaning is another important component of the Highway Districts efforts to keep stormwater runoff clean. The Highway Districts regularly vacuum out accumulated silt, debris, and pollutants from catch basins, manholes, and inlets, to prevent stormwater runoff from flushing these pollutants into local lakes and rivers.



### Did You Know?

Lakes are full of tiny creatures called zooplankton. They eat algae before fish eat them. Plankton easily mistake micro-plastics for algae. Plastics continually break down into smaller pieces, becoming microscopic beads or filaments. Micro-plastics act like sponges to absorb toxic chemicals. Once ingested, plastic moves up in the food web, increasing exposure to PCBs and toxins.

### You Can Help!

Don't throw litter on roadways.  
Make sure litter ends up in a trash can. Volunteer for local litter pick up events. Maintain vehicles to prevent leaking. Never place pollutant into a catch basin or inlet, including leaves and grass clippings

Learn More!



## “The Pollution” & “The Solution” Banners for Public Outreach & Education



## STORMWATER RUNOFF DEMONSTRATION



## 6 Unique Provisions

## 6 UNIQUE PROVISIONS SPECIFIC TO LAKES, POST FALLS, AND EAST SIDE HIGHWAY DISTRICTS

---

### 6.1 Annual Compliance Evaluation

The Annual Report that is required by Part 6.4.2 of the NPDES Permit is accessible on the following websites:

Post Falls Highway District: [www.postfallshd.com](http://www.postfallshd.com)

### 6.2 Alternative Control Measure Requests

Requests must be made before October 2022.

### 6.3 Adaptive Management Actions

There are no Adaptive Management actions to date.