

**POST FALLS HIGHWAY DISTRICT
STORM WATER MANAGEMENT PROGRAM**



2015 ANNUAL REPORT

Storm Water Discharges from Small Municipal Separate Storm Sewer Systems

Permit Effective Dates: January 1, 2009-December 31, 2013
Currently Operating Under an Administrative Extension

Prepared by:

**Ruen-Yeager & Associates, Inc.
3201 N. Huetter Road, Suite 102
Coeur d'Alene, Idaho 83814**

A. PERMITTEE INFORMATION

Permit Number: IDS-028193

Permittee: Post Falls Highway District (PFHD)

Mailing Address: East 5629 Seltice Way

City, State and Zip Code: Post Falls, Idaho 83854

Phone Number: (208) 765-3717

Have any areas been added to the MS4 due to annexation or other legal means? YES **NO**
(If yes, include updated map.)

B. REPORTING PERIOD: January 1, 2015 to December 31, 2015

C. STATUS OF STORM WATER MANAGEMENT PROGRAM

1. **Public Education and Outreach:**

a. *General summary of accomplishments to date:*

A mail out was distributed in 2015 to residents who front District rights-of-way where the MS4 is present. A revised mail out was developed this year to attract new interest from the recipients. The mail out still contains information about Healthy Household Habits for Clean Water and was produced specifically for the District's MS4. In all 115 flyers were mailed. A copy of the flyer and the mailing list are attached in Appendix A.

PFHD has a partnership with the Panhandle Stormwater & Erosion Education Program (SEEP). PFHD has contributed \$1900 to SEEP to date. PFHD displays SEEP brochures at its office and the SEEP trailer is periodically located at its office to serve as advertisement for the program. SEEP field manuals are distributed with utility permits. PFHD maintenance staff members maintain SEEP certification. PFHD has 12 maintenance staff that are SEEP certified. See Appendix A for PFHD Staff Seep Certification List.

PFHD's website received 891 total hits in December of 2015. Twenty-six (26) of those hits were for the 2015 Annual Report.

PFHD joined the City of Coeur d'Alene, Lakes Highway District, and East Side Highway District in supporting "Green Up CDA Earth Day Celebrations" on April 18, 2015. This open to the public forum provided exhibits in a fun, educational, and informational setting to educate local residents and visitors how to protect and preserve the environment 365 days per year. This included storm water demonstrations, "Get Involved Booths", crafts and egg hunts, and outreach events for adults and children. See Appendix A for event advertisement and photos of the event.

PFHD also supported the multi-jurisdictional Silverwood Science and Physics Days at Silverwood Theme Park in Chilco, Idaho. This is an event focused on middle school students and incorporates educational competitions including learning about the aquifer,

storm water to ground water connections, and environmental science, engineering, and construction skills. This event included IDEQ, the City of Coeur d'Alene, Lakes Highway District and East Side Highway District. See Appendix A for advertisement of this event.

The PFHD also supported the City of Coeur d'Alene's efforts to distribute the "Storm Drain Dan" coloring book to children to foster an awareness of the connection between storm water and waters of the US.

The PFHD in cooperation with the City of Coeur d'Alene, Lakes Highway District, and East Side Highway District participated in a daylong storm water presentation on May 7, 2015 during "Idaho Water Awareness Week" to Ramsey Elementary Students at the City of Coeur d'Alene Wastewater Treatment Plant. This team also presented a daylong presentation to Ramsey Elementary third graders at their Science Day Event on December 11th.

PFHD, along with Lakes Highway District and East Side Highway District are actively involved in the Regional Water Quality Public Educators Work Group whose goal is to develop a community wide collaborative efforts for public education shared opportunities, access to shared resource materials, collaboration on a regional branding, and a better public education accomplishment for all agencies involved.

b. An evaluation of compliance with the requirements of this permit, the appropriateness of identified BMPs, and progress toward achieving identified measurable goals of the SWMP:

Prior to receiving Notice of Violation from EPA sent March 14, 2012, PFHD believed its partnership with SEEP was the most efficient and effective way of implementing a public education and outreach program. The Notice recommended "a more targeted outreach to specific audiences (e.g. residences along PFHD's storm sewer system)". THE PFHD participated in the local storm water coalition meeting and sent engineering representatives to work on joint alternative storm water treatment demonstration project concepts. PFHD believes the "Healthy Household Habits for Clean Water" mail out completes our requirements and brings us into compliance.

c. Results of information collected and analyzed during the previous 12-month reporting period, including storm water discharge data, surface water monitoring data, and any other information used to assess the success of the program at reducing the discharge of pollutants to the maximum extent practicable:

Six (6) pieces of storm water related literature were distributed to the general public at the District's office in 2011.

Fifteen (15) pieces of storm water related literature were distributed to the general public at the District's office in 2012.

Ten (10) pieces of storm water related literature were distributed to the general public at the District's office in 2013.

Ten (15) pieces of storm water related literature were distributed to the general public at the District's office in 2014.

Six (6) pieces of storm water related literature were distributed to the general public at the District's office in 2015.

A summary of the number and nature of inspections and formal enforcement actions performed:

Not applicable for this control measure.

d. A general summary of the activities the permittee will undertake during the next reporting cycle (including an implementation schedule) for each minimum control measure:

PFHD will do the following during the 2016 calendar year:

- Continue staff training for illicit discharge detection and reporting, and prepare maintenance procedures.
- Approve Associated Highway District Standard changes to support working with partners to jointly address MS4/NPDES issues through implementation of District Standard policies.
- Mail another storm water-related flyer or provide similar information to residences along the MS4.
- Make additional contributions to SEEP if needed and continue to participate in SEEP sponsored events.
- Continue involvement in the Regional Water Quality Public Educators Work Group.
- Development of an Interpretive Sign that was co-sponsored by Post Falls Highway District, Lakes Highway District, and East Side Highway District as part of the Cleaner. Water. Faster. Grant won by the University of Idaho to develop an Interpretive Trail for public education.
- Continue to participate in additional educational open houses or presentations regarding storm water pollution prevention and other related topics with local agencies and the general public.
- Continue to distribute SEEP BMP field manuals with utility permits.
- Maintain and continue to update the display of relevant storm water literature at its office and keep track of how many of each piece of literature is distributed. Include educational information regarding illicit discharge.
- Update links to its SWMP information and other sources of storm water related information on its web site.
- Develop either a video or audio PSA for public airing.

e. Proposed changes to the SWMP, including changes to any BMPs or any identified measurable goals for any minimum control measures since previous report or permit application:

The SWMP was reviewed and no changes were proposed or implemented in 2015.

f. Notice if the permittee is relying on another entity to satisfy some of the permit obligations, if applicable.

Not applicable.

2. Public Involvement/Participation:

a. General summary of accomplishments to date:

PFHD has not held any meetings for the specific purpose of discussing storm water management but continues to hold its regular public meetings. PFHD has attended MS4 coordination meetings for the Coeur d'Alene Urbanized Area on the following dates:

- 2/9/11
- 3/29/11
- 3/29/12

Attendees for these meeting have included representatives from Lakes Highway District, City of Coeur d'Alene, City of Post Falls, ITD, and EPA.

PFHD's website has been updated to include all relevant SWMP documents and the 2015 Annual Reports.

b. An evaluation of compliance with the requirements of this permit, the appropriateness of identified BMPs, and progress toward achieving identified measurable goals of the SWMP:

PFHD believes it has complied with applicable public notice requirements and with its web site update is in compliance with permit requirement II.B.2.b.

c. Results of information collected and analyzed during the previous 12-month reporting period, including storm water discharge data, surface water monitoring data, and any other information used to assess the success of the program at reducing the discharge of pollutants to the maximum extent practicable:

No information collected.

d. A summary of the number and nature of inspections and formal enforcement actions performed:

Not applicable for this control measure.

e. A general summary of the activities the permittee will undertake during the next reporting cycle (including an implementation schedule) for each minimum control measure:

PFHD will do the following during the 2016 calendar year:

- Continue to attend any MS4 coordination meeting.
- Participate in the SEEP Partnership with the University of Idaho.

- Update its website with information relevant to the SWMP as it becomes available.
- Participate in and/or sponsor one multi-jurisdictional Environmental Open House, Earth Day Celebration and/or Science and Physics Fair...

f. Proposed changes to the SWMP, including changes to any BMPs or any identified measurable goals for any minimum control measures since previous report or permit application:

None.

g. Notice if the permittee is relying on another entity to satisfy some of the permit obligations, if applicable.

Not applicable.

3. Illicit Discharge Detection and Elimination:

a. General summary of accomplishments to date:

The PFHD has completed its MS4 map. The map was updated to reflect new culverts observed along Schilling Loop during dry weather screening. It has also completed a Spill Response Plan as part of its SWMP. An EPA flier regarding illicit discharge has been made available to the public at the District office. PFHD maintenance staff attended a SWMP, a joint training session including illicit discharge education with Lakes Highway District and East Side Highway District on December 11, 2015. The training session included a presentation by the District's consulting engineer, Laura Winter, regarding MS4 areas and Illicit Discharge Detection and Elimination. This included a question and answer session, an interactive Power Point presentation on outfall protection, maintenance, and good housekeeping.

No illicit discharge was detected. In addition, the Road Supervisor and his assistant continue to monitor the MS4 for illicit discharge during their routine maintenance rounds.

2015 Dry Weather Screening Activities

Dry weather screening was conducted by Ruen-Yeager Engineering Staff on August 3, 2015 on all of the District's outfalls. We noted the following as provided in the "Preliminary Dry Weather Monitoring Report" Field Report in Appendix B:

1. One (1) Outfall had minimal flow
 - Outfall Number 27 had a flow described as less than 1 gallon per minute without any unusual deposits, vegetation, or conditions.
2. Outfall Number 13 was noted as being ½ filled with pine needles.
3. Outfall Number 10, 13, 14, and 15 were not observed due to their presence on private property.
4. No samples were collected.

5. No observations of illicit discharges were noted.
6. Photos were taken of all outfalls except Outfalls Number 10, 13, 14, and 15.

It has been determined that there are no industrial facilities that discharge into the District's MS4.

No updates to the PFHD MS4 Map were performed in 2015.

- b. An evaluation of compliance with the requirements of this permit, the appropriateness of identified BMPs, and progress toward achieving identified measurable goals of the SWMP:*

PFHD believes that it is in compliance to the best of its ability. PFHD is not able to adopt an illicit discharge ordinance because it does not have authority but will work with Kootenai County, EPA, and IDEQ for correction of observed illicit discharges.

- c. Results of information collected and analyzed during the previous 12-month reporting period, including storm water discharge data, surface water monitoring data, and any other information used to assess the success of the program at reducing the discharge of pollutants to the maximum extent practicable:*

See "Preliminary Dry Weather Monitoring Report" in Appendix B.

- d. A summary of the number and nature of inspections and formal enforcement actions performed:*

Nothing to report.

- e. A general summary of the activities the permittee will undertake during the next reporting cycle (including an implementation schedule) for each minimum control measure:*

PFHD will do the following during the 2016 calendar year:

- Visually monitor the MS4 area during routine maintenance rounds.
- Screen all outfalls during July-October in accordance with the Dry Weather Screening Plan. Conduct additional screening in spring and fall during maintenance and monitoring.
- Document and report detected illicit discharges to Kootenai County, EPA and IDEQ in accordance with the Spill Response Plan.

- f. Proposed changes to the SWMP, including changes to any BMPs or any identified measurable goals for any minimum control measures since previous report or permit application:*

No changes.

- g. Notice if the permittee is relying on another entity to satisfy some of the permit obligations, if applicable.*

Not applicable.

4. Construction Site Storm Water Runoff Control:

a. General summary of accomplishments to date:

The PFHD is aware of the NPDES Construction General Permit and complies with permit requirements for its own projects. PFHD will also assist with review & monitoring of private construction projects that discharge to its MS4. PFHD continues its public education and outreach program through a partnership with SEEP in order to meet its requirements for distributing information to local construction site operators.

b. An evaluation of compliance with the requirements of this permit, the appropriateness of identified BMPs, and progress toward achieving identified measurable goals of the SWMP:

PFHD believes it is in compliance to the best of the District's ability. PFHD does not have ordinance authority but will notify Kootenai County and EPA if it becomes aware of potential violations of the Construction General Permit and/or the Kootenai County Site Disturbance Ordinance.

c. Results of information collected and analyzed during the previous 12-month reporting period, including storm water discharge data, surface water monitoring data, and any other information used to assess the success of the program at reducing the discharge of pollutants to the maximum extent practicable:

Nothing to report.

d. A summary of the number and nature of inspections and formal enforcement actions performed:

Nothing to report.

e. A general summary of the activities the permittee will undertake during the next reporting cycle (including an implementation schedule) for each minimum control measure:

PFHD will do the following during the 2016 calendar year:

- Continue to develop, discuss with the Associated Highway District supervisors and commissioners, and adopt when finalized the NPDES related standards approved for inclusion in the next Associated Highway Districts of Kootenai County Highway Standards
- Comply with CGP requirements for PFHD constructed projects.
- Review erosion control plans as part of its review process for private projects under PFHD jurisdiction.
- As part of the road inspection process for new private projects, ensure that the appropriate level of erosion control is in place during construction.
- Educate staff on construction storm water discharges and direct staff to keep an eye on construction storm water discharges from private projects during road maintenance activities and maintenance rounds.

- Document and report detected illegal construction storm water discharges to EPA and Kootenai County.
- The District will track approach and utility permits within the MS4 and at the time of permit issuance will distribute information regarding storm water BMPs to those projects located in the MS4.

f. Proposed changes to the SWMP, including changes to any BMPs or any identified measurable goals for any minimum control measures since previous report or permit application:

No changes to the SWMP are anticipated.

Notice if the permittee is relying on another entity to satisfy some of the permit obligations, if applicable.

Not applicable.

5. Post-Construction Storm Water Management in New Development and Redevelopment:

a. General summary of accomplishments to date:

Ordinances are already in place through Kootenai County, the City of Post Falls and the City of Coeur d'Alene that require post-construction storm water controls for significant private construction projects in PFHD's jurisdiction. PFHD design and construction practices have historically followed the principals of the ordinances. PFHD maintains all drainage facilities within its right-of-way and provides plan review of post-construction storm water designs for projects within its jurisdiction.

The District constructed improvements to the intersection of Riverview Drive and Greensferry Road, adjacent to Outfall #16. The improvements included removal of asphalt and improvement to swales and ditches to the northeast and southwest corners.

b. An evaluation of compliance with the requirements of this permit, the appropriateness of identified BMPs, and progress toward achieving identified measurable goals of the SWMP:

The PFHD developed and implemented storm water erosion control Best Management Practices and scheduling in the execution of PFHD projects in the area. The placement, planning, and maintenance of these BMPs and the resulting no erosion, no sedimentation and no impact conditions verify that the PFHD efforts keep them in compliance.

c. Results of information collected and analyzed during the previous 12-month reporting period, including storm water discharge data, surface water monitoring data, and any other information used to assess the success of the program at reducing the discharge of pollutants to the maximum extent practicable:

Nothing to report.

d. A summary of the number and nature of inspections and formal enforcement actions performed:

Nothing to report.

e. A general summary of the activities the permittee will undertake during the next reporting cycle (including an implementation schedule) for each minimum control measure:

PFHD will do the following during the 2016 calendar year:

- Continue efforts to advocate NPDES standards to be included in the Associated Highway Districts Highway Standards.
- Continue to follow local storm water management design principles for PFHD constructed projects.
- Provide installation inspection of storm water controls for private projects within the right-of-way and those facilities off the right-of-way that discharge to the MS4.
- Continue maintaining all drainage facilities within the right-of-way.
- Monitor private storm water facilities off the right-of-way that discharge to the MS4. Notify the owner and/or appropriate regulatory entity if the facility is not being maintained or is not functioning properly.

f. Proposed changes to the SWMP, including changes to any BMPs or any identified measurable goals for any minimum control measures since previous report or permit application:

None.

g. Notice if the permittee is relying on another entity to satisfy some of the permit obligations, if applicable.

Not applicable.

6. Pollution Prevention and Good Housekeeping for Municipal Operations:

a. General summary of accomplishments to date:

Operation and Maintenance procedures to protect storm water runoff have been formalized into a text document as part of the SWMP. PFHD maintenance staff attended a training session on February 1, 2012, December 4, 2013, December 22, 2014, and December 11, 2015. Included in Appendix C are the sign-in sheets for the training and a copy of the presentation. Attendance records are attached to this Annual Report.

O&M has been improved through constant training on the Highway District's winter maintenance and snow removal policy. The District will continue to sweep the gutters in the MS4 area this winter as weather permits.

b. An evaluation of compliance with the requirements of this permit, the appropriateness of identified BMPs, and progress toward achieving identified measurable goals of the SWMP:

The O&M procedures have been developed and the District believes this is adequate to cover the requirement for a Stormwater Pollution Prevention Plan for its maintenance facility. The training session fulfills requirement II.B.6.b.

c. Results of information collected and analyzed during the previous 12-month reporting period, including storm water discharge data, surface water monitoring data, and any other information used to assess the success of the program at reducing the discharge of pollutants to the maximum extent practicable:

Nothing to report.

d. A summary of the number and nature of inspections and formal enforcement actions performed:

Nothing to report.

e. A general summary of the activities the permittee will undertake during the next reporting cycle (including an implementation schedule) for each minimum control measure:

PFHD will do the following during the 2016 calendar year:

- Conduct another training session for PFHD employees in the spring or early summer of 2016 to avoid the potential for weather related conflicts.
- Send additional staff members to SEEP certification classes.

f. Proposed changes to the SWMP, including changes to any BMPs or any identified measurable goals for any minimum control measures since previous report or permit application:

None.

g. Notice if the permittee is relying on another entity to satisfy some of the permit obligations, if applicable.

Not applicable.

D. REQUIRED DOCUMENTS AND REPORTS

1. Storm Water Management Plan is posted on the website.
2. MS4 Map is posted on the website.
3. Public Education & Outreach Documents are attached in Appendix A.
4. 2015 Dry Weather Screening Report is attached in Appendix B.
5. Record of attendance and copy of presentation for PFHD Staff Training is included in Appendix C.

E. CERTIFICATION

“I certify under penalty of law that this document and all attachments were prepared under my direction or supervision in accordance with a system designed to assure that qualified personnel properly gathered and evaluated the information submitted. Based on my inquiry of the person or persons who manage the system, or those persons directly responsible for gathering the information, the information submitted is, to the best of my knowledge and belief, true, accurate, and complete. I am aware that there are significant penalties for submitting false information, including the possibility of fine and imprisonment for knowing violations.”



Signature of Permittee (legally responsible person)

2-10-2016

Date Signed

Kelvin Brownsberger, Road Supervisor

Name & Title (printed)

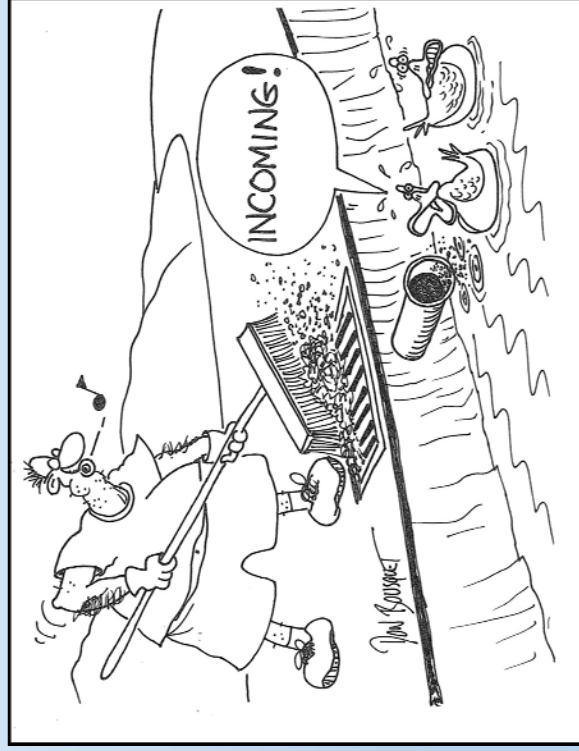
Appendix A

Did you know?

The United States Environmental Protection Agency regulates the Post Falls Highway District's stormwater discharges through a permit.

The permit requires the District to inform the public about stormwater pollution and how to prevent it.

The Permit also requires the District to monitor discharges from roadside ditches and storm drains.



For more information, visit www.postfallshd.com



Post Falls Highway District
5629 E. Seltice Way
Post Falls, Idaho 83854

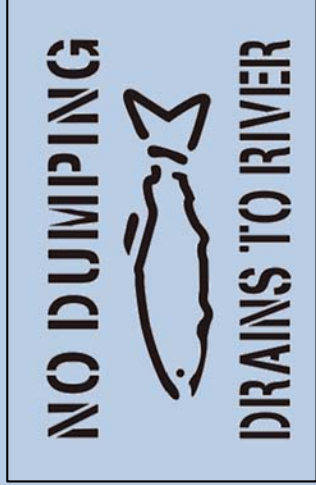
HOW CAN YOU HELP PREVENT STORMWATER POLLUTION?

As stormwater flows over driveways, lawns, and roadways, it picks up debris, chemicals, dirt, and other pollutants. Polluted runoff is the nation's greatest threat to clean water.



STORMWATER FROM YOUR AREA FLOWS INTO THE SPOKANE RIVER UNTREATED.

By practicing healthy household habits, homeowners can keep common pollutants like pesticides, pet waste, grass clippings, and automotive fluids off the ground and out of stormwater.



HEALTHY HOUSEHOLD HABITS FOR CLEAN WATER

Vehicle and Garage

- Use a commercial car wash or wash your car on your lawn to minimize the amount of dirty, soapy water flowing into the river.
- Check your car, boat, and lawn equipment for leaks and spills. Clean up spilled fluids with an absorbent material like kitty litter or sand, and don't rinse the spills into a storm drain.
- Recycle used oil and other automotive fluids. Don't dump these chemicals down the storm drain or dispose of them in your trash. Visit kgov.us/departments/solid-waste or call 208-446-1430 for disposal information.



Lawn and Garden

- Use pesticides and fertilizers sparingly. Avoid application before rain.
- Sweep up yard debris, rather than hosing down areas.
- Don't overwater your lawn.

Home Improvement

- Sweep up and properly dispose of construction debris such as concrete and mortar.
- Use hazardous substances like paints, solvents, and caulk cautiously. Clean up spills immediately, and dispose of the waste safely.
- Clean paint brushes in a sink, not outdoors.



Pet Care

- When walking your pet, remember to pick up the waste and dispose of it properly.

HUMPHREY, JEFFERY C
3839 E 17TH AVENUE
SPOKANE, WA 99223

SCHAEFER, RICHARD JAMES
311 S LOWER CRYSTAL BAY RD
POST FALLS ID 83854

SUSAN LONGDEN SURVIVORS
TRUST
361 S LOWER CRYSTAL BAY RD
POST FALLS, ID 83854

CARLSON, NATALIE L
459 S LOWER CRYSTAL BAY RD
POST FALLS ID 83854

CAYKO, ROD
475 S LOWER CRYSTAL BAY RD
POST FALLS, ID 83854

HOAG, CHARLES
527 S LOWER CRYSTAL BAY RD
POST FALLS ID 83854

MCKITTRICK, WALLIS
500 S LOWER CRYSTAL BAY RD
POST FALLS, ID 83854

JAMES C GEORGE AND VALERIE J
GEORGE
11309 W CRYSTAL BAY RD
POST FALLS ID 83854

LITSCHESKI, MICHAEL
11351 W CRYSTAL BAY RD
POST FALLS ID 83854

PALMER, ANN M
11381 W CRYSTAL BAY RD
POST FALLS ID 83854

BOURASSA, CRAIG A
11417 W CRYSTAL BAY RD
POST FALLS ID 83854

SPRUTE, GAYLE M
246 S LOWER CRYSTAL BAY RD
POST FALLS ID 83854

CMF 323 NORTH OAK FAMILY
PTSHP
547 S LOWER CRYSTAL BAY RD
POST FALLS, ID 83854

WILKINSON, KENNETH A
3680 W SELTICE WAY # B
POST FALLS, ID 83854

DETAR, THOMAS
3135 S SCHILLING LOOP
POST FALLS ID 83854

DETAR, THOMAS
994 S PENNY LN
POST FALLS, ID 83854

BASSLER, RAYMOND
1031 S PENNY LN
POST FALLS ID 83854

PROCK, ARTHUR
1079 S PENNY LN
POST FALLS ID 83854

HANKES, MATTHEW BEIER
4273 S SCHILLING LOOP
POST FALLS ID 83854

EVANS, STEPHEN
943 S PENNY LN
POST FALLS ID 83854

SNIDER, LYLE
962 S PENNY LN
POST FALLS ID 83854

COLLINS, TRACY
887 S PENNY LN
POST FALLS ID 83854

WHEELER DENNIS E
4289 S SCHILLING LOOP
POST FALLS ID 83854

SULLIVAN ERRIN M
4375 S SCHILLING LOOP
POST FALLS ID 83854

KLEMO, KEITH
927 S PENNY LN
POST FALLS ID 83854

STEINER MICHAEL D
847 S PENNY LN
POST FALLS ID 83854

MAYO, R
825 S PENNY LN
POST FALLS ID 83854

BRONSTEIN, CHERIE
4419 S SCHILLING LOOP
POST FALLS ID 83854

COHEN, CODY
787 S PENNY LN
POST FALLS ID 83854

MATTHEW AND ANDREA SMITH
LIVING TRUST
2346 S COMET TRL
POST FALLS ID 83854

TOWNE, ROBIN
767 S PENNY LN
POST FALLS ID 83854

SLCK COMMERCIAL PROPERTIES
LLC
737 S PENNY LN
POST FALLS ID 83854

WALSH, JASON D
2322 S COMET TRL
POST FALLS ID 83854

GRANT, PAMELA
691 S PENNY LN
POST FALLS ID 83854

RICHARDS, DONALD E
2253 S COMET TRL
POST FALLS ID 83854

READ, LEONARD W
525 S PENNY LN
POST FALLS ID 83854

PAULITZ, GREGORY
547 S PENNY LN
POST FALLS ID 83854

HAWLEY, STACY L
567 S PENNY LN
POST FALLS ID 83854

MONTY R AND DEANNA L MURPHY
655 S PENNY LN
POST FALLS ID 83854

GOECKNER, CHRIS
808 S PENNY LN
POST FALLS ID 83854

CONRAD, GEORGE
752 S PENNY LN
POST FALLS ID 83854

DALE THOMAS AND GAIL M
WORDEN LIVING TRUST
706 S PENNY LN
POST FALLS ID 83854

MUSCH, BRAD
678 S PENNY LN
POST FALLS ID 83854

LEWIS, JAMES
652 S PENNY LN
POST FALLS, ID 83854

HUNDRUP, JARED C
622 S PENNY LN
POST FALLS, ID 83854

IRELAT LLC
608 S PENNY LN
POST FALLS ID 83854

COLEMAN, PENELOPE
594 S PENNY LN
POST FALLS ID 83854

QUINCY, GARY J
572 S PENNY LN
POST FALLS ID 83854

LYBARGER, JUANITA
562 S PENNY LN
POST FALLS ID 83854

STAPLETON, RICHARD E
14332 W RIVERVIEW DR
POST FALLS ID 83854

JACOBS, CYNTHIA
14104 W RIVERVIEW DR
POST FALLS ID 83854

HINTHORNE, DEBORAH L
12465 W RIO VISTA PL
POST FALLS ID 83854

KARWOSKI, TIMOTHY
12456 W RIO VISTA PL
POST FALLS ID 83854

ROBERT AND GALENDA FRANKLIN
LIVING TRUST
12413 W RIO VISTA PL
POST FALLS ID 83854

GALE, KEVIN L
12383 W RIO VISTA PL
POST FALLS ID 83854

GRACE INVESTMENTS LLC
12355 W RIO VISTA PL
POST FALLS, ID 83854

ELTON AND PATRICIA WEEKS
LIVING TRUST
14195 W RIVERVIEW DR
POST FALLS ID 83854

RINKAVAGE, THOMAS
14155 W RIVERVIEW DR
POST FALLS, ID 83854

LEBO, MICHAELE
PO BOX 2494
POST FALLS, ID 83877

HYATT, REX A
1099 S SPOKANE ST
POST FALLS ID 83854

BROWNLEE, VICKIE
1063 S SPOKANE ST
POST FALLS ID 83854

ELLISON, WILLIAM J
11992 W SPAN WAY
POST FALLS ID 83854

JOHNSON, RICHARD
PO BOX 2288
POST FALLS, ID 83877

BOOKAMER, KENNETH
12524 W HUGHES LN
POST FALLS ID 83854

GINGRICH, HEATHER L
12174 W HUGHES LN
POST FALLS, ID 83854

BARNETT, JEFFREY
12173 W HUGHES LN
POST FALLS ID 83854

SEVERANCE, MARK
12190 W PARKVIEW DR
POST FALLS ID 83854

GETCHIUS, THOMAS H
12191 W PARKVIEW DR
POST FALLS ID 83854

HUNTER, RONALD
12190 W PARK LN
POST FALLS ID 83854

DENNIS 2004 TRUST
740 S SPOKANE ST
POST FALLS, ID 83854

DILLON, MARGIE L
12189 W PARK LN
POST FALLS ID 83854

HOFFMAN, ROBERT C
12259 W SPAN WAY
POST FALLS ID 83854

WILHELM FAMILY TRUST
12021 W RIVERVIEW DR
POST FALLS ID 83854

FISHER, JAMES
11947 W RIVERVIEW DR
POST FALLS ID 83854

METCALF, KEITH A
11917 W RIVERVIEW DR
POST FALLS, ID 83854

DECKER FAMILY TRUST
PO BOX 2127
SPOKANE, WA 99210

ROCCA, JAMES
11843 W RIVERVIEW DR
POST FALLS ID 83854

STIGER, ROBERT
11831 W RIVERVIEW DR
POST FALLS ID 83854

FOWLER, CECIL
PO BOX 2127
POST FALLS, ID 83877

NELSON, EARL
11755 W RIVERVIEW DR
POST FALLS, ID 83854

RIVERVIEW GROUP LLC
11745 W RIVERVIEW DR
POST FALLS, ID 83854

FOWLER, GARRY
11717 W RIVERVIEW DR
POST FALLS ID 83854

HILL, DEBBIE S
11663 W RIVERVIEW DR
POST FALLS, ID 83854

JARA, FRANCISCO
11637 W RIVERVIEW DR
POST FALLS, ID 83854

PHILMAR CORPORATION
11607 W RIVERVIEW DR
POST FALLS ID 83854

GROLLMUS, JOHN
11593 W RIVERVIEW DR
POST FALLS ID 83854

SAMMY AND RAMONA STEPHENS
LIVING TRUST
11573 N RIVERVIEW DR
POST FALLS ID 83854

WILLAMETTE VALLEY REAL
PROPERTY LLC
11555 W RIVERVIEW DR
POST FALLS, ID 83854

PAULL, SHARON
11523 W RIVERVIEW DR
POST FALLS, ID 83854

BINGHAM, DWIGHT
11483 W RIVERVIEW DR
POST FALLS ID 83854

WALTER AND GRACE SINGER
TRUST
11463 W RIVERVIEW DR
POST FALLS ID 83854

WILLIAMS, MICHAEL PAUL
11437 W RIVERVIEW DR
POST FALLS, ID 83854

ROSTIE, CHRISTOPHER
11385 W RIVERVIEW DR
POST FALLS ID 83854

MELTON, JUDSON
11361 W RIVERVIEW DR
POST FALLS ID 83854

TEFFT, LURENE M
11309 W RIVERVIEW DR
POST FALLS ID 83854

MATTIODA, SUZANNE
PO BOX 361
POST FALLS, ID 83877

VAN DYKE, STEVEN E
11251 W RIVERVIEW DR
POST FALLS, ID 83854
PO BOX 315
ROSALIA, WA 99170

RON AND KATHY ANDERSON
FAMILY TRUST
11189 W RIVERVIEW DR
POST FALLS ID 83854

SILBERBERGER, CHARLES
11171 W RIVERVIEW DR
POST FALLS ID 83854

MAYFIELD, KENNETH G
11151 W RIVERVIEW DR
POST FALLS ID 83854

NECHANICKY, ROBERT
11113 W RIVERVIEW DR
POST FALLS ID 83854

HARMON FAMILY TRUST
11075 W RIVERVIEW DR
POST FALLS ID 83854

ZHONG, RUINIAN
PO BOX 3115
POST FALLS, ID 83877

BARTON, TIMOTHY W
11013 W RIVERVIEW DR
POST FALLS ID 83854

PATTERSON, JEAN
10967 W RIVERVIEW DR
POST FALLS, ID 83854

PETER AND VALERIE STOHL
10982 W RIVERVIEW DR
POST FALLS ID 83854

SCOGGIN, JEFF D
11024 W RIVERVIEW DR
POST FALLS ID 83854

BOWEN, AIMEE
11074 W RIVERVIEW DR
POST FALLS ID 83854

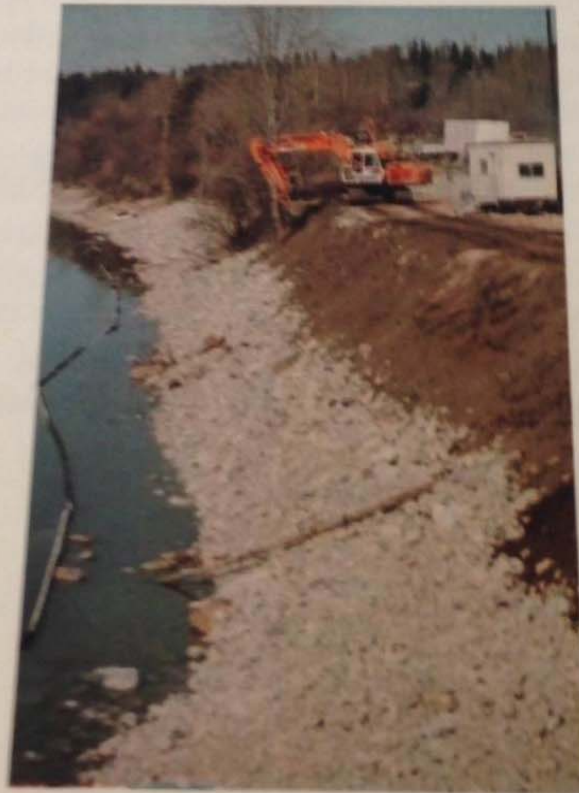
CUSACK, RUTH A
11102 W RIVERVIEW DR
POST FALLS, ID 83854

LEWIS, J
11124 W RIVERVIEW DR
POST FALLS ID 83854

LYON, JERRY C
11142 W RIVERVIEW DR
POST FALLS ID 83854



North Idaho
**Stormwater
Erosion &
Sediment Control
Field Guide**



www.PanhandleSEEP.org



Last Name	First Name	Expires	Dates of Last Certifications
Crumb	Brian	12/31/2017	2007, 2010, 2014
Paulson	Brian	12/31/2016	2013
Peterson	Dan	12/31/2018	March 2015; May 2011
Yerian	Dave	12/31/2017	2014
Mael	Ed	12/31/2017	2012, 2014
Prestegaard	Eric	12/31/2017	2008, 2014
Wines	James	12/31/2018	March 2015; 2007, 2010
Lupton	Joshua	12/31/2016	2013
Brownsberger	Kelly	Expired	
Howell	Larry	12/31/2016	2013
Likes	Les	Expired	
Roberts	Mark	12/31/2018	March 2015; May 2012
Monette	Mike	Expired	2007, 2012
Neal	Randy	Expired	Apr, 2008
Shaffer	Steve	12/31/2018	March 2015; May 2011
Mitley	Travis	12/31/2018	March 2015; 2007, 2012

**PROTECT
OUR**

GEM



**EARTH DAY CELEBRATION
2015**

**FUN RUN AT NOON
FLASH MOB YOGA
LIVE MUSIC
RECYCLED ART SHOW
DRUMMING
CRAFTS
INFORMATION**

**FREE
FUN FOR
ALL AGES**

**SATURDAY, APRIL 18TH • NOON-3PM
CDA PUBLIC LIBRARY • 702 E. FRONT AVE • DOWNTOWN CDA**



**Tubbs Hill
Foundation**



Earth Day – April 18, 2015 Coeur d'Alene





[Rides & Attractions](#) [Park Info](#) [Admission](#) [Groups](#) [Contests & Fun](#) [Events & Deals](#) [Lodging](#)



GROUP TICKETS
GROUP PICNICS
CONSIGNMENT TICKETS
COMPANY OUTINGS
SCHOOL OUTINGS
FAMILY REUNIONS
BIRTHDAY PARTIES
GROUP FAQs

[Park Tickets](#) [Season Passes](#) [Cabana Rentals](#) [Group Discounts](#) [Buy Tickets Now & Save!](#)



School Outings

Earn an A+ from your students

There's no doubt your students will love a trip to Silverwood. But as a parent or teacher, you'll enjoy it quite a bit too, because we make it easy and affordable to bring your school group for a fun, memorable, and educational trip. Just call one of our sales executives and let them help plan your outing for any regular season day, group only and Marketing, Business Day - May 20th - or Physics and Science Days, see below for detailed information.

Advance Reservation Required



Physics, DECA and Science Days: May 20 & 21, 2015

During Silverwood's 17th Annual Physics and Science Days, we turn our theme park into one of the world's most unique classrooms.

We've created an event where students can test the principles of physics and science for themselves using rides, games, and other attractions. They'll participate in educational competitions like the Amazing Egg Drop or the Coaster Building Contest, watch science themed Discovery Channel movies, learn about the Aquifer at the DEQ Educational booth or at the new KSPS Public Television booth, and a whole lot more.

Each participating class receives a curriculum to use that includes instructions for contests and an engineering and construction skills test. Trophies and ribbons are awarded to the top 3 schools. The best overall school will win \$100 in cash. Book your trip now and give your students a day they'll never forget.

We've cooked up a lunch special just for students

Starting at only \$5.99 per person, kids and teachers can receive a School Value Meal or upgrade for a very low cost per meal to our amazing Conductor meals.

School Value Meal \$5.99 (Single Serving)

Pepsi Beverages
 Tender Pulled BBQ Pork
 Buns
 Hot Dogs
 Potato Chips
 Macaroni & Cheese
 Watermelon

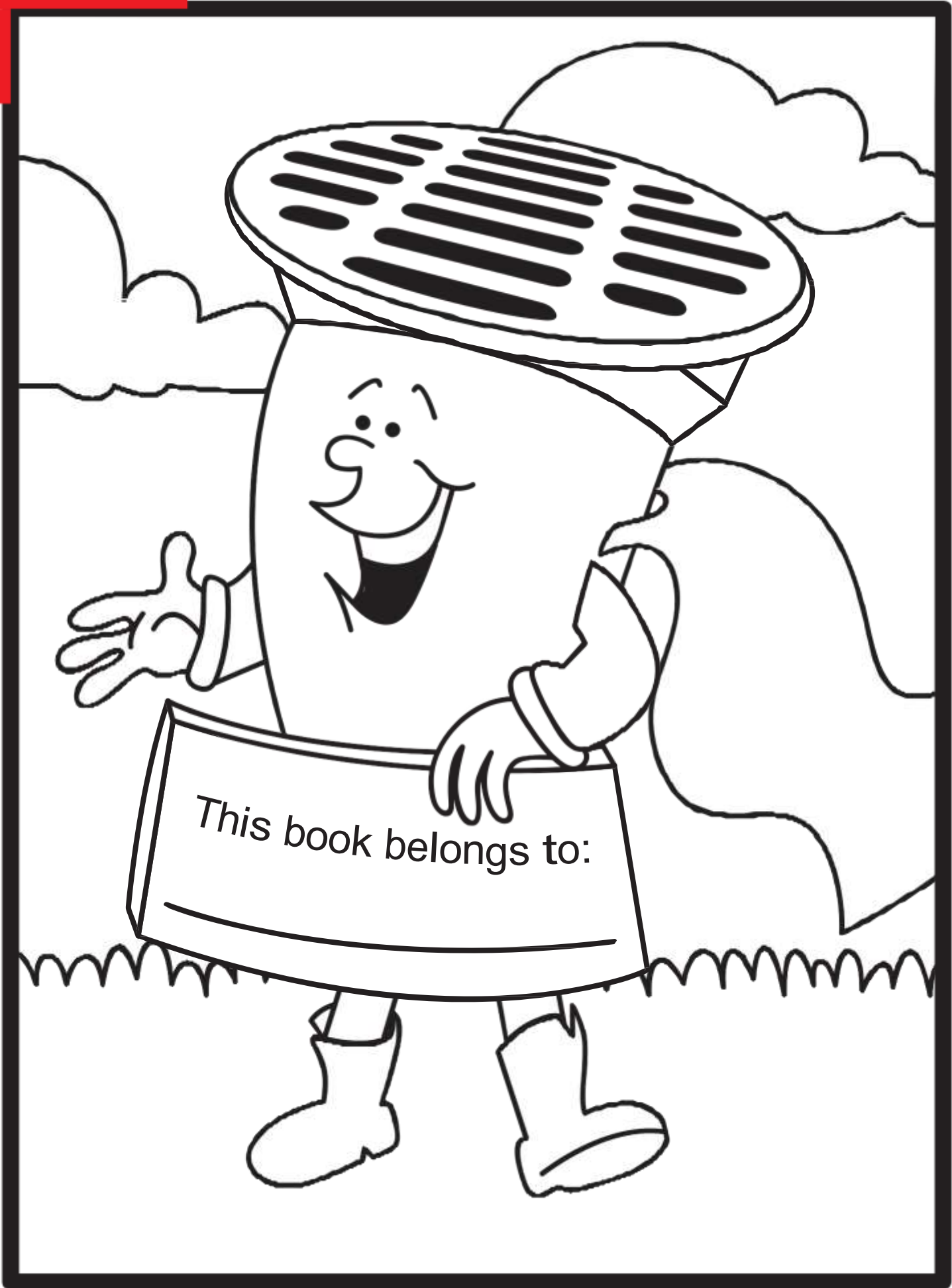
Conductor \$9.99 (All-You-Can-Eat)

Pepsi Beverages
 Grilled Chicken Quarters
 Tender Pulled BBQ Pork
 Buns
 Hot Dogs
 Mac n Cheese
 Coleslaw
 Pasta Salad
 Baked Beans
 Corn Bread
 Country Green Beans

STORM DRAIN DAN



Adventures in Water Pollution Prevention!



This book belongs to:

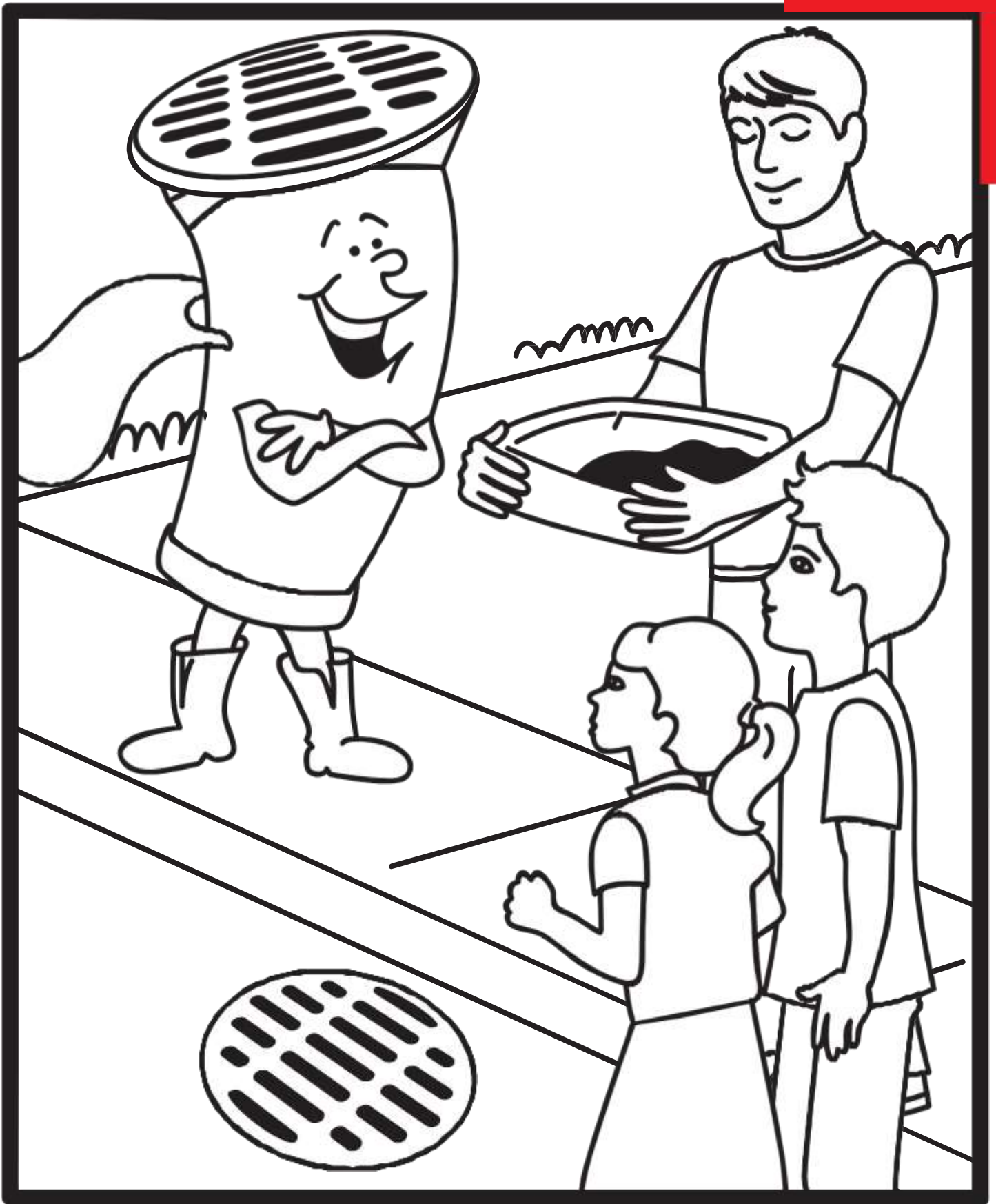


As Storm Drain Dan flies over a neighborhood, he spots a man changing the oil in his car.

“Boy, I sure hope he knows what to do with the used oil!” says Dan.

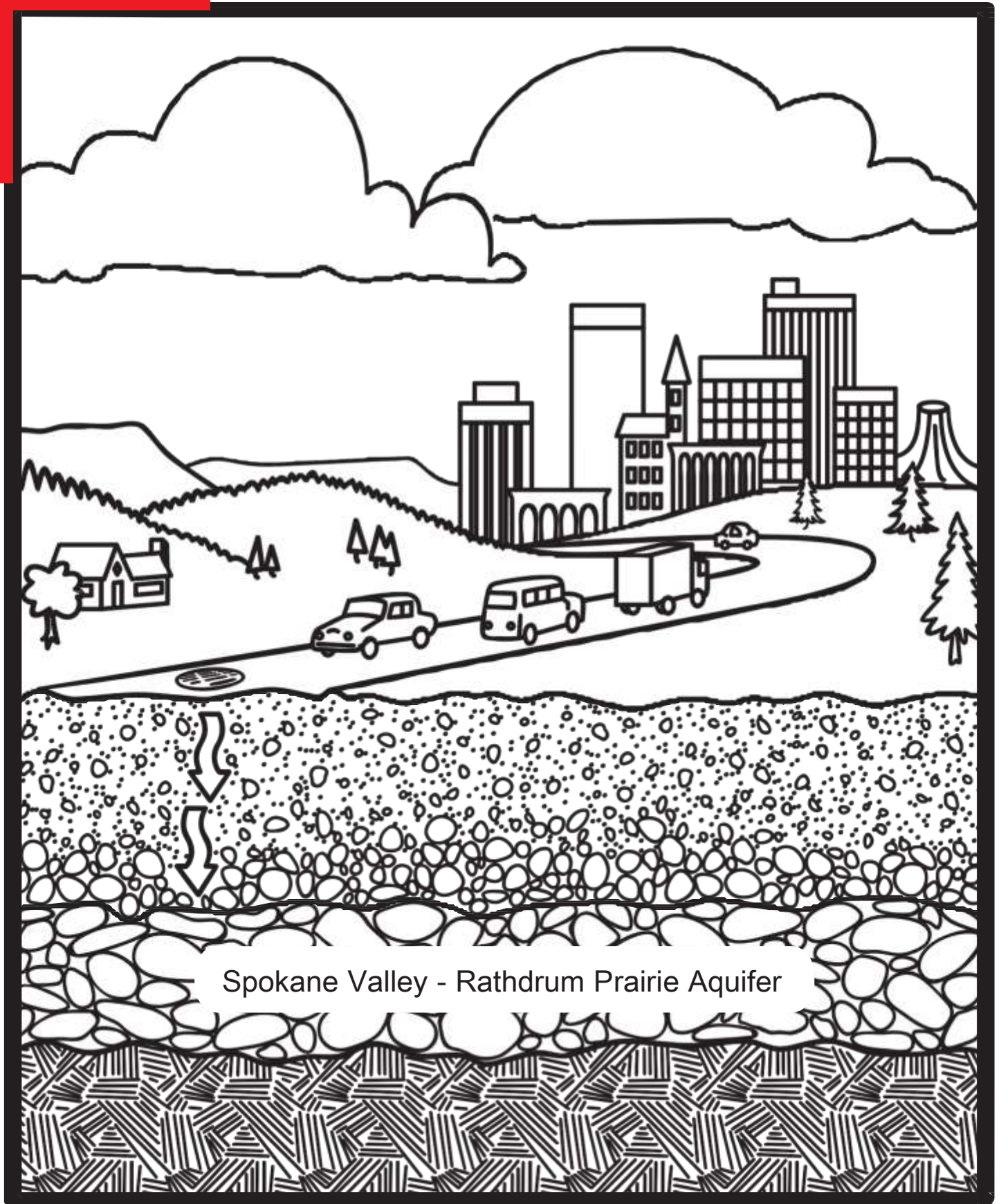


Cruising in for a landing, Storm Drain Dan says,
“Excuse me, Sir. Please don’t pour that used oil into the storm drain.”



“Hi, Jody and Johnny!” says Dan.

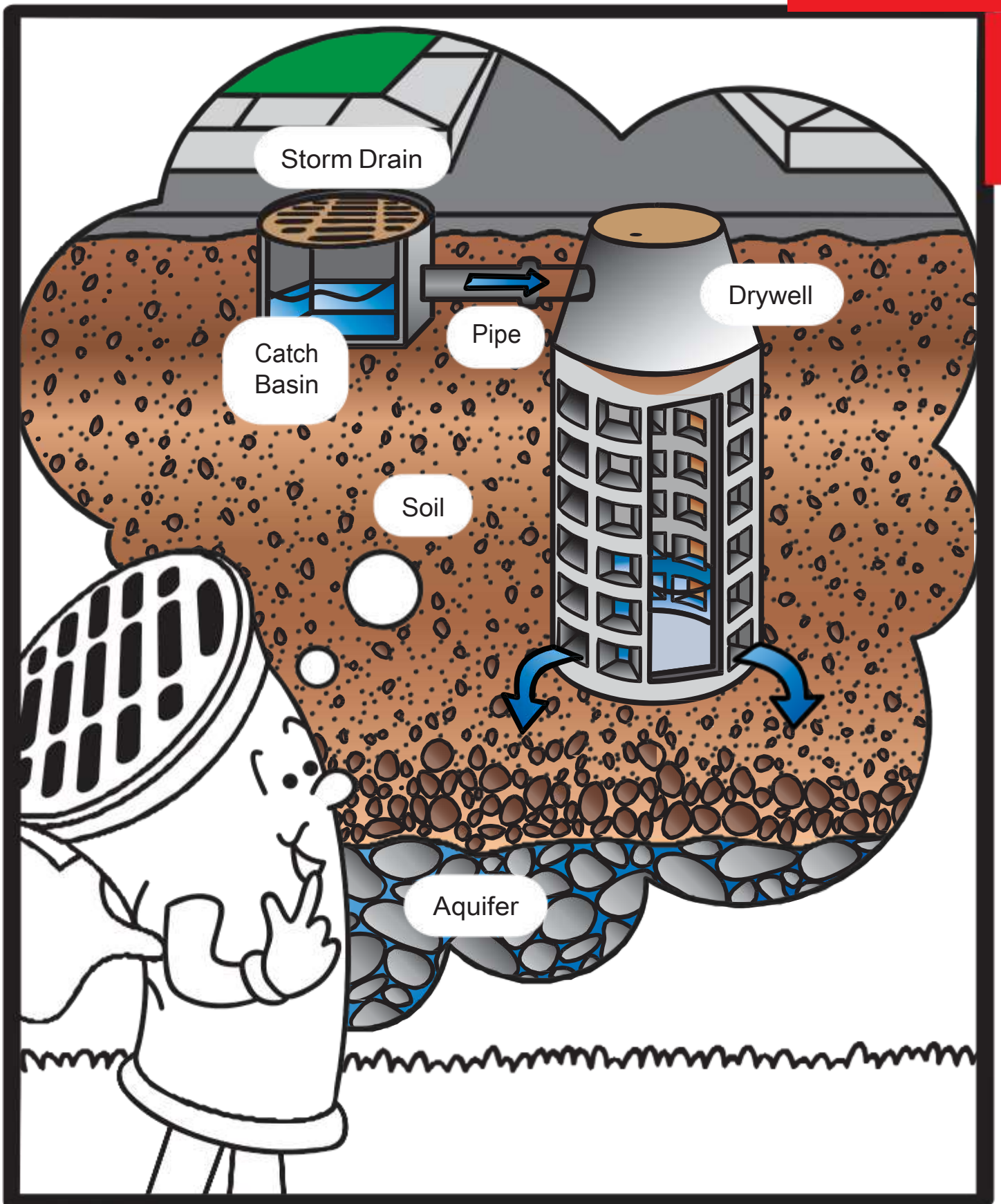
“I was just going to tell your Dad about recycling that motor oil. Do either of you know what happens when things like used oil are dumped into a storm drain?”



Spokane Valley - Rathdrum Prairie Aquifer

“Sure,” says Jody.

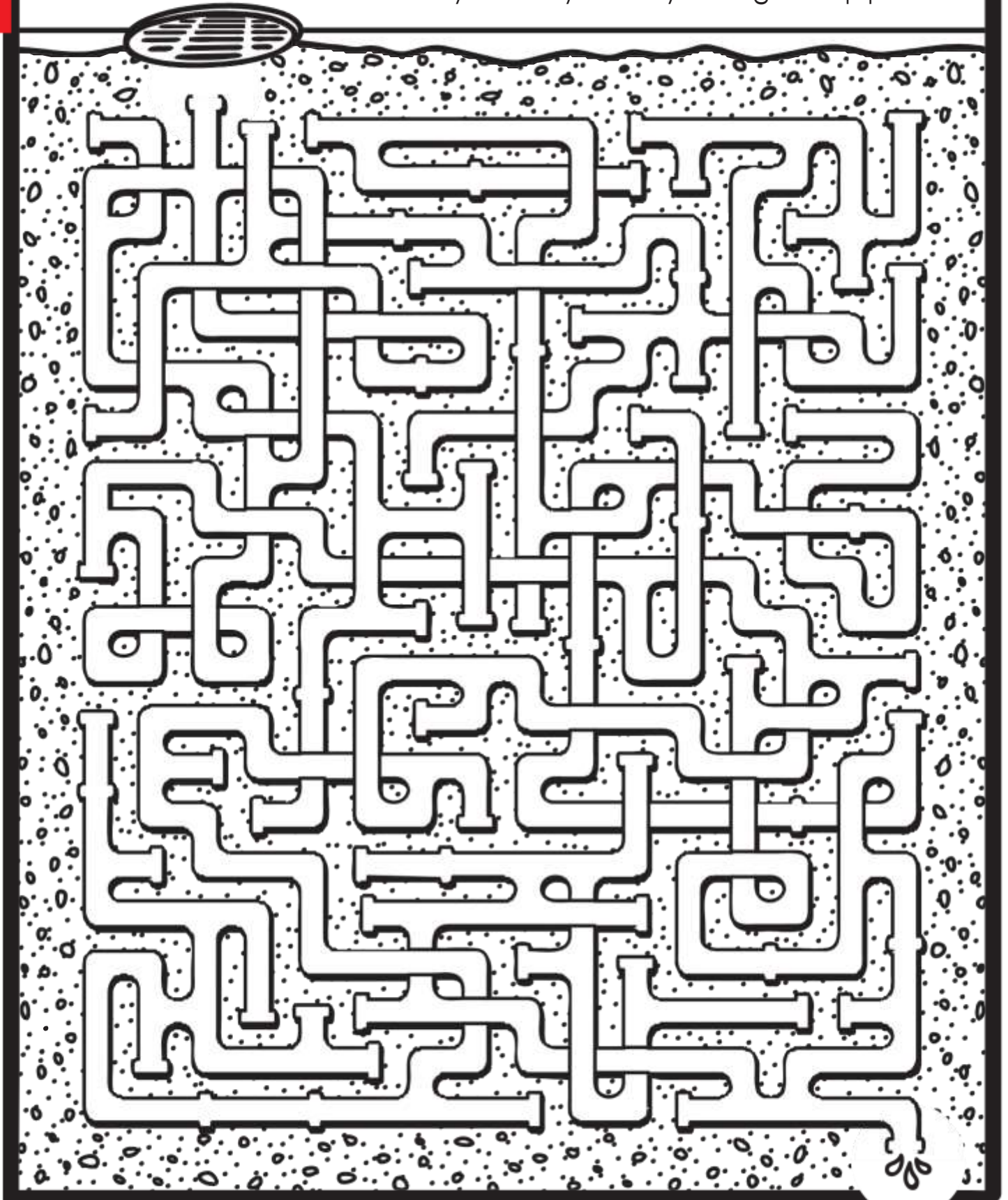
“Most storm drains infiltrate stormwater right into the ground to recharge the aquifer, and some drain right to our lakes and rivers.”



“Jody, you are absolutely right,” says Storm Drain Dan.

“This storm drain definitely isn’t connected to the sewer. Instead, the stormwater travels through pipes, drywells, and the soil before reaching the aquifer or a waterbody.”

Storm Drain Dan's
A-maze-ing Stormwater Maze
Can you find your way through the pipes?





“The pollution can infiltrate along with the stormwater to the aquifer and contaminate our drinking water,” Dan continues.

“Did you know it only takes 4 quarts of motor oil to pollute 1 MILLION gallons of water?”

Storm Drains are for Rainwater Only - Pure and Simple.

Hidden in the puzzle below are words having to do with water or common types of water pollution, including motor oil. Remember to look up, down, across, backwards, and diagonally!

H	S	A	R	T	S	I	B	I	M	S	E	U	P	J
T	S	T	O	R	M	W	A	T	E	R	L	A	E	V
M	U	N	O	I	T	U	L	L	O	P	P	V	T	T
E	Z	E	E	R	F	I	T	N	A	U	M	L	W	C
H	T	U	W	E	M	O	T	O	R	O	I	L	A	F
Y	H	N	F	U	O	D	N	E	P	L	S	E	S	F
R	E	Z	I	L	I	T	R	E	F	G	P	W	T	O
C	A	R	W	A	S	H	W	A	T	E	R	Y	E	N
S	E	C	Y	P	P	A	Q	U	I	F	E	R	C	U
	T	Q	N	V	A	G	R	U	N	F	D	Q	R	



WORD LIST

Storm Drain

Drywell

Aquifer

Stormwater

Runoff

Pollution

Motor Oil

Antifreeze

Car Wash Water

Trash

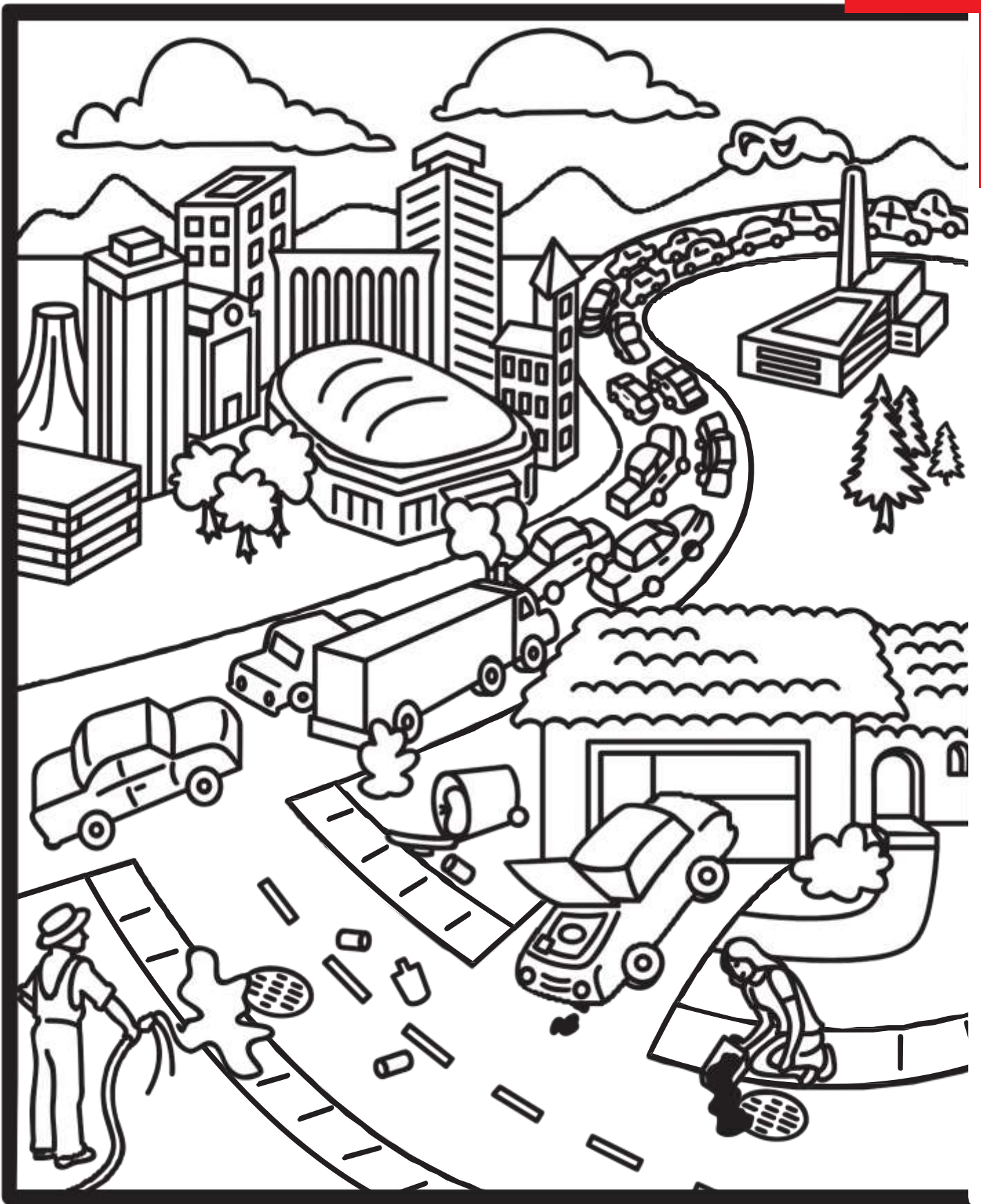
Pet Waste

Paint

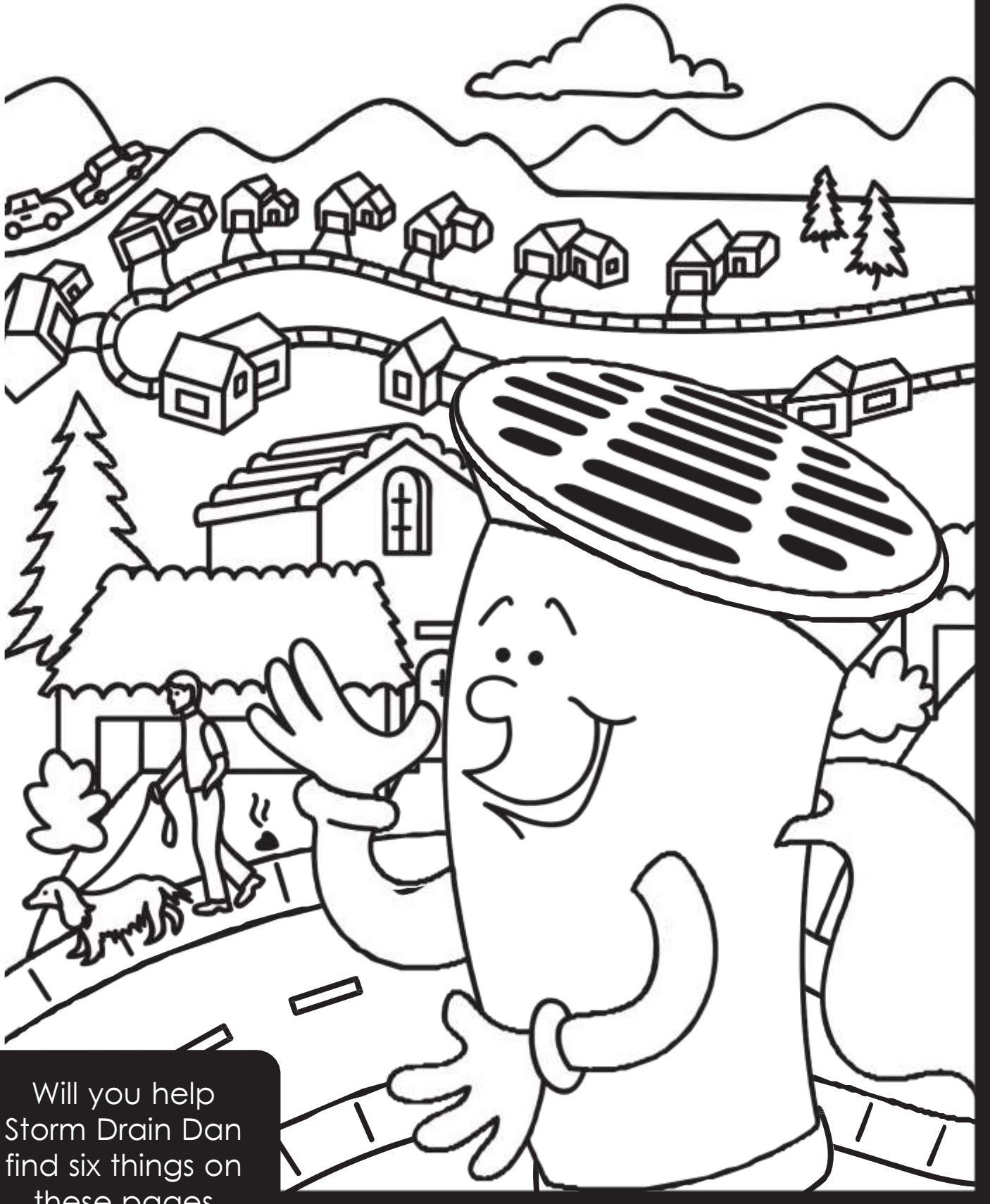
Fertilizer

Pure

Simple



“It’s very important that we remember to keep our city clean!” Johnny says.



Will you help Storm Drain Dan find six things on these pages that can pollute water or air?

- 1. _____
- 2. _____
- 3. _____
- 4. _____
- 5. _____
- 6. _____



“Now I know that recycling our used motor oil, antifreeze, and other chemicals will help keep them from polluting the environment and our aquifer,” says Dad.



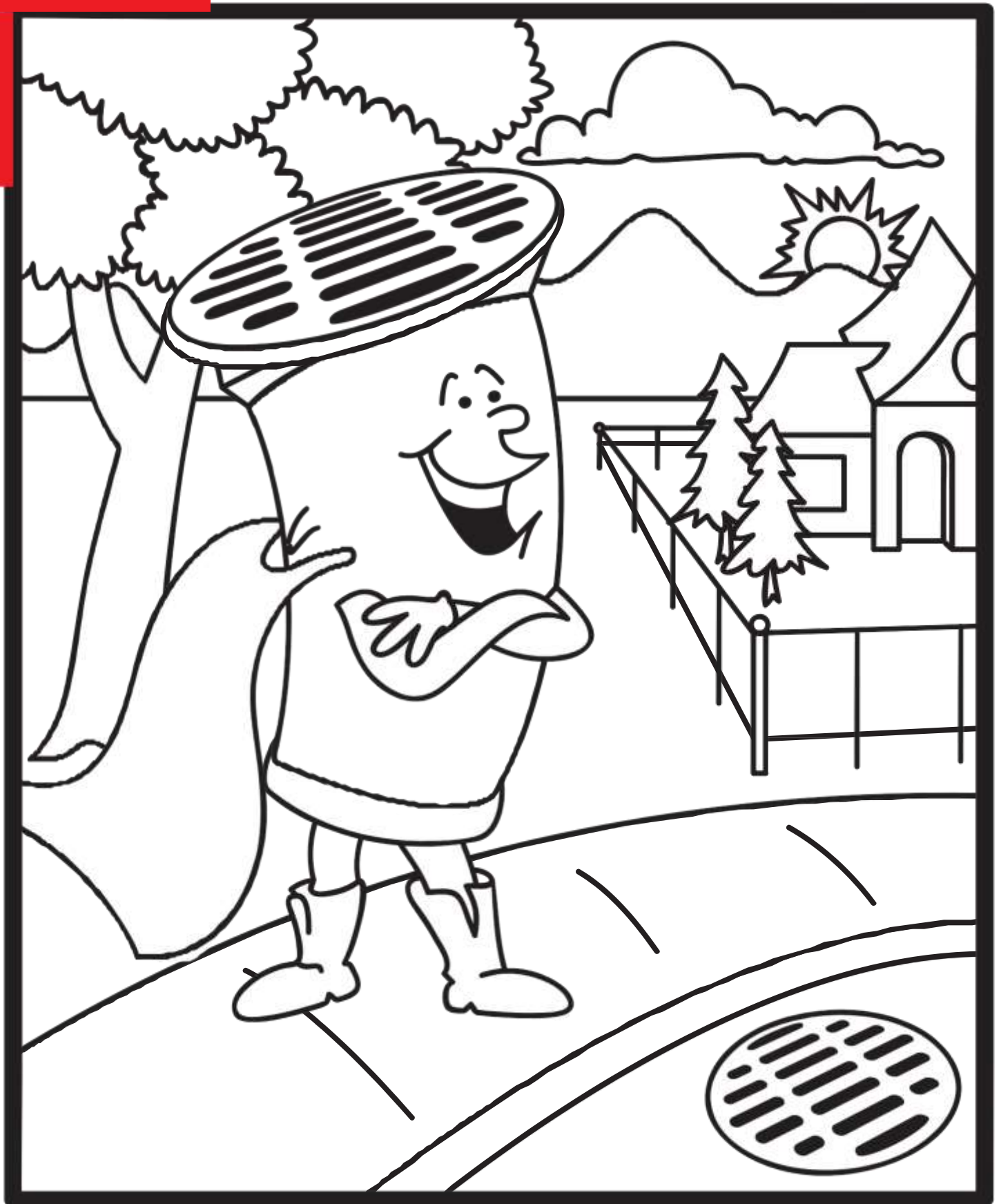
“Hey, kids, let’s take the used oil to the auto parts store to be recycled!”

“After that, I’ll treat you both to some ice cream. Storm Drain Dan is right, we can make a difference just by changing simple behaviors at our own home.”



"Thanks for the ice cream, Dad!" says Jody.

"Storm Drain Dan is the protector of our storm drain system, and he sure is great."

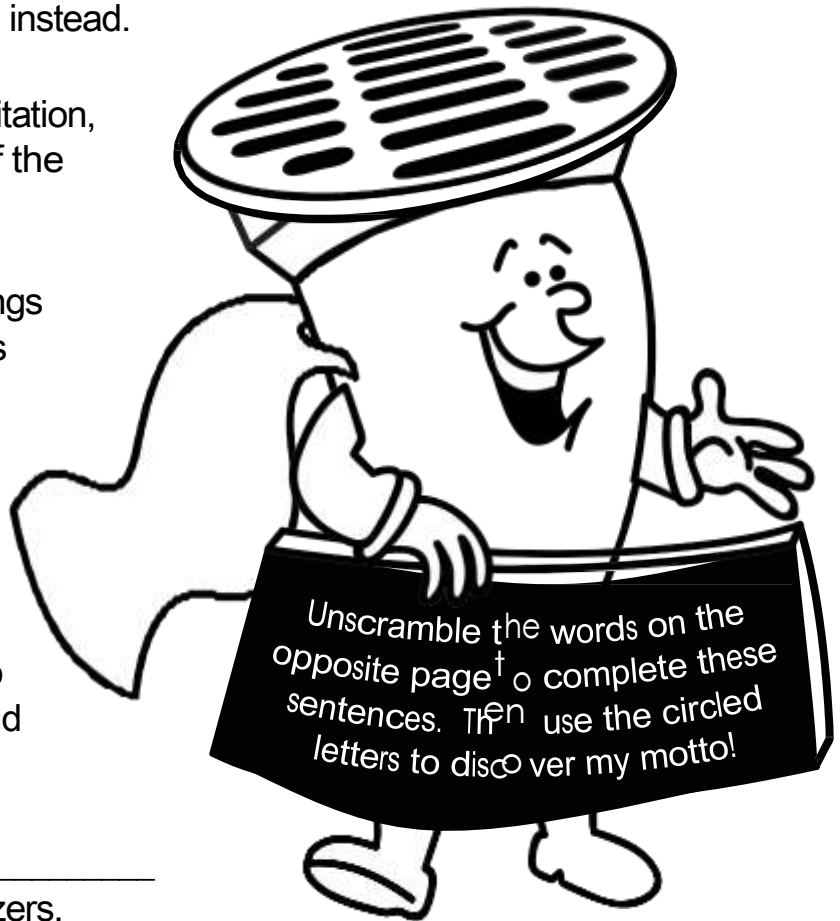


“Even one person can make a difference,” says Storm Drain Dan.
“Remember, every living thing needs clean water. So, let’s all work together
to keep the environment clean, especially stormwater, the aquifer and our
lakes and rivers !

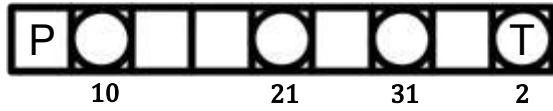
Storm Drain Dan's

WORD JUMBLE

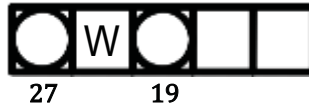
1. A substance that contaminates water is called a _____.
2. Instead of hosing down the driveway when it gets dirty, we should _____ instead.
3. Evaporation, condensation, precipitation, runoff, and infiltration are all parts of the water _____.
4. It's important to _____ things like motor oil, paint, and car batteries rather than throwing them away.
5. A natural fertilizer made up of decaying leaves, grass, and food scraps is called _____.
6. Stormwater that does not soak into the ground, but instead flows over land and roads is called _____.
7. Leaving grass clippings on the _____ reduces the need for chemical fertilizers.
8. An underground layer of rock, sand, or gravel that holds water.
9. Only rain should go down the storm _____.
10. Rainwater, snowmelt, or runoff from sprinklers that flows to a storm drain system.
11. "Even one person can make a _____."
12. Water that falls from the sky to the earth is called _____.
13. Drinking water is pumped up from our aquifer through one of these.



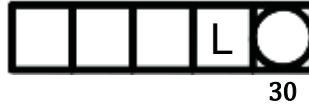
1. ANUTTLLLOP



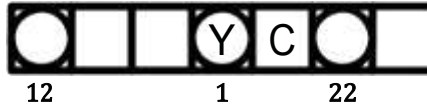
2. EPSEW



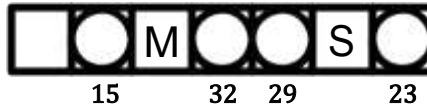
3. LCEYC



4. CCELERY



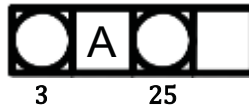
5. MTCOOSP



6. NFFUOR



7. WNLA



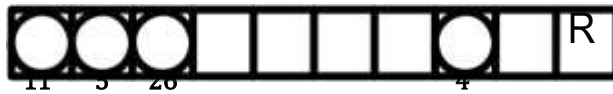
8. QFIUARE



9. INRAD



10. TOSRWTREMA



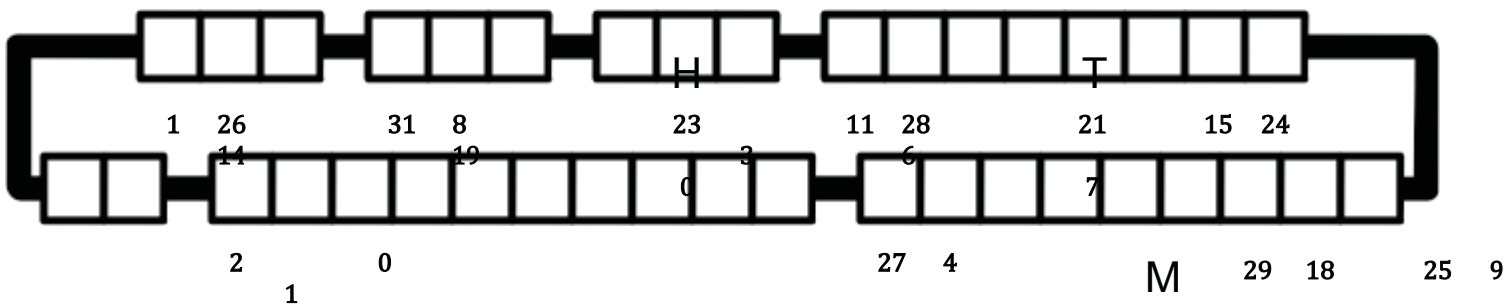
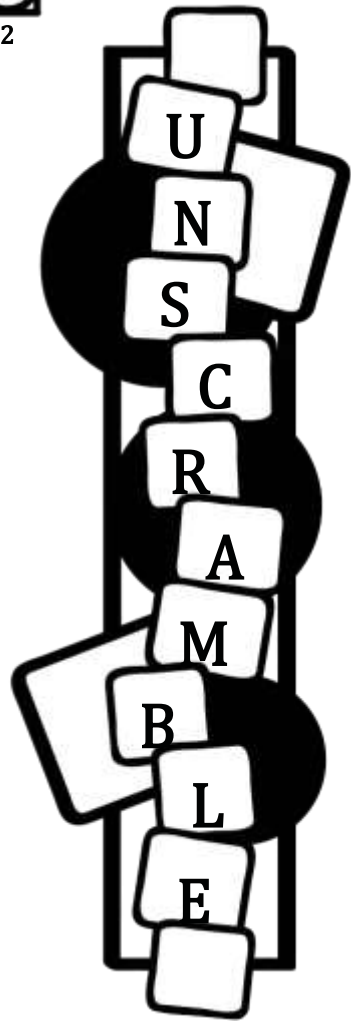
11. DEFEENRFIC



12. ARNI



13. LELW





“Storm Drain Dan, I know how I can make a difference!” says Johnny.
“I’m going to stencil this storm drain to remind our neighbors that anything dumped in the street can end up polluting the aquifer.”

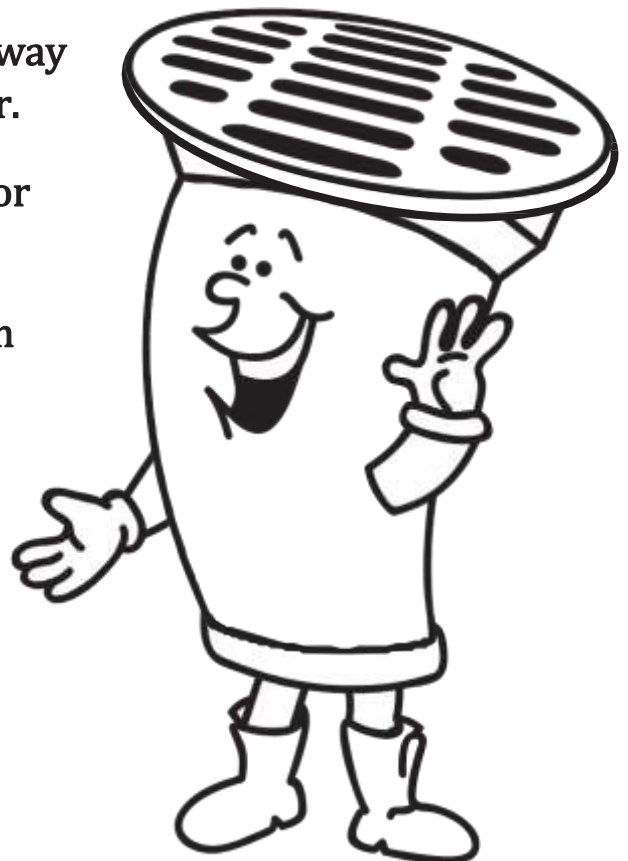
Think You Can't Make a Difference Like Johnny? You Can!

Just Take the Storm Drain Dan Clean Water Pledge.



Check at least one of the boxes that you will pledge to do in the next month that will help protect the environment and aquifer. When you've decided, sign and date the pledge at the bottom.

- I will not litter. I will put paper cups, cans, bottles, food wrappers, papers and all other trash into garbage cans or recycling bins.
- I will always carry a bag to clean up my dog's waste when I take him/her for walks at the park or around the neighborhood.
- When I help wash the family car at home, I will make sure the soapy water flows to my yard and not down the driveway into the street.
- I will pick up any grass clippings or leaves that fall into the street when I'm helping with yard work.
- I will use a broom to clean my driveway instead of hosing it down with water.
- I will use a refillable bottle or cup for my drinks whenever I can.
- I will turn off the faucet while I'm brushing my teeth.
- I will remember that only rain should go down storm drains.



My Signature

Date



Storm Drain Dan is a concrete storm drain pipe who magically came to life one day. He wants to help everyone in Spokane County understand how important it is to keep our storm drains, aquifer, and environment clean.

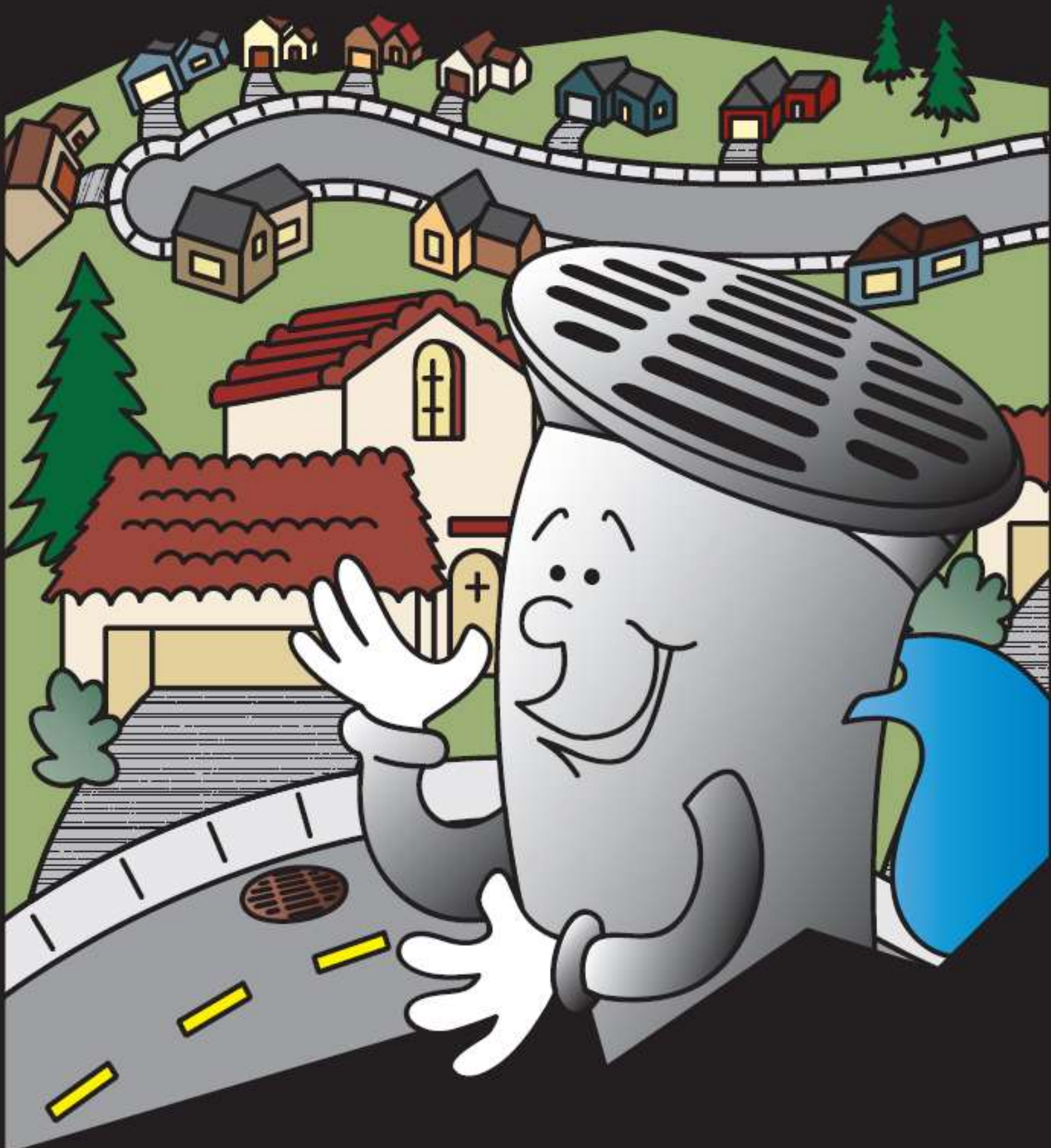
As Storm Drain Dan flies overhead, his telescopic vision (binoculars) allows him to keep an eye on the things you and I do every day. He looks for people who dump trash or oil into the street, don't clean up after their pets, don't use fertilizer or weed killers the proper way, and lots more!

Please help Storm Drain Dan plug up polluters by doing your part to keep trash and chemicals out of streets and storm drains.

Remember, Storm Drain Dan says...

“You are the solution to stormwater pollution!”

Visit our website for more information! www.cdavid.org
To report someone dumping trash or chemicals into a storm drain,
street, or swale, contact the City of Coeur d'Alene at:
769-2300 or City Hotline 676-7405.



Appendix B



August 13, 2015

Kelly Brownsberger
Road Supervisor
Post Falls Highway District
5629 E. Seltice Way
Post Falls, Idaho 83854

**Re: Preliminary Dry Weather Monitoring Report Post Falls Highway District NPDES
MS4
Project No.: 090104**

Dear Kelly:

RYA staff provided dry weather monitoring for 28 outfalls in the Spokane River Basin on August 3, 2015. We noted the following as provided on the attached "Field Report Outfall Observations" sheets (3 pages total).

1. 1 Outfall had minimal flow
 - Outfall Number 27 had a flow described as less than 1 gallon per minute without any unusual deposits, vegetation, or conditions.
2. Outfall Number 10, 13, 14 and 15 were not observed due to their presence on private property.
3. No samples were collected.
4. No observations of illicit discharges were noted.
5. Photos were taken of all outfalls except Outfalls Number 10, 13, 14, and 15.

The above information together with the Field Report Outfall Observation sheets and photos taken of the outfalls will be compiled with the other required information for inclusion in the 2015 Annual Report.

Sincerely,
RUEN-YEAGER & ASSOCIATES, INC.

Laura Winter, P.E.

Laura Winter, P.E.

Dry Weather Screening Report

Post Falls Highway District MS4 Outfalls

EPA NPDES Permit No.

Name: Matt Harwood

Date: 8/3/2015

Temperature (°F) & Weather: 90° Sunny

Date of Last Rainfall: 0.02" 7/27/15

Instructions:

1. Ensure that it has not rained within 72 hours.
2. Fill out the top portion of this page.
3. Bring the Dry Weather Screening Report along with a copy of the MS4 map and a GPS device in case outfall locations are not obvious and need to be located by latitude and longitude.
4. Visit each outfall location shown on the map and make an entry on the Outfall Observations Page of the Dry Weather Screening Report.
 - a. If an outfall is not accessible (some may be under water), the outfall should be checked at the first point of accessibility upstream of the outfall location. Note this location in the notes section of the report.
 - b. Take a digital photo of the outfall at the location of screening and log the photo number.
 - c. If there is flow present at the outfall, estimate the flow rate and record it on the entry.
 - d. If there is flow present, note any unusual odor, color, oil sheen, turbidity or floatables in the discharge. If there is none, write "none".
 - e. If there are any unusual deposits (i.e. oily or sediment) or vegetation conditions (i.e. inhibited growth), note it on the entry.
 - f. If flow is present, make an attempt to trace it upstream to determine its source. Take one of the following actions:
 - If the discharge does not exhibit any unusual characteristics and appears to be from groundwater or another allowable non-storm water discharge, note this in the notes section of the report and take no further action.
 - If unusual odor, color, oil sheen, turbidity, floatables or deposits are present or if there is any other reason that testing is warranted, contact Accurate Testing Laboratories at (208) 762-8378 and arrange for a sample kit to test for conductivity, pH, ammonia, chlorine, nitrate and phosphorus. Coordinate with the District Engineer to review the test results and determine if further investigation is needed.
5. Use the notes section to record specific observations and details for any flow observed.
6. Attach any test results and follow up reports to the Dry Weather Screening Report.
7. Dry Weather Screening Reports will be filed with the Annual Report and posted on the District's web site along with the digital photos of the outfalls.

Outfall Observations

MAP NO.	PHOTO NO.	EST. FLOW IN GAL/MIN	ODOR, COLOR, OIL SHEEN, TURBIDITY, OR FLOATABLES IN DISCHARGE? (Y/N)	UNUSUAL DEPOSITS OR VEGETATION CONDITIONS? (Y/N)
1	001	NONE	N	N
2	002		N	N
3	003		N	N
4	004		N	FLOW LINE @ OUTLET 1/3 FULL OF PINE NEEDLES
5	005		N	N
6	006		N	N
7	008/009		N	N
8	008/010		N	N
9	011		N	
10	—		—	—
11	012		N	FLOW LINE @ OUTLET 1/4 FULL OF LEAVES
12	013		N	N
13	—		—	—
14	—		—	—
15	—		—	—
16	014		N	N
17	015		N	N
18	016		N	N
19	017		N	N
20	018		N	N
21	019		N	N
22	020		N	N
23	021		N	N
24	022		N	N
25	023		N	N
26	026		∇	N
27	024	<1	N	N
28	025	NONE	N	N

Notes:

8/3/2015

#10 PIPED ON PRIVATE PROPERTY. OUTLET BELOW HIGH WATER MARK @ SPOKANE RIVER. NO PICTURE.

#13 OUTLET NOT FOUND DUE TO PRIVATE PROPERTY. INLET OBSERVED DRY NO PICTURE.

#14 OUTLET EXTENDS BELOW HIGH WATER MARK @ SPOKANE RIVER. EXTENDING DOWN BOAT RAMP. INLET OBSERVED DRY. NO PICTURE.

#15 OUTLET NOT ^{OBSERVED} FOUND DUE TO PRIVATE PROPERTY. OUTLET BELOW HIGH WATER MARK @ SPOKANE RIVER. NO PICTURE.

AUGUST 3, 2015



#1



#2

AUGUST 3, 2015



#3



#4

AUGUST 3, 2015



#5



#5

AUGUST 3, 2015



#8

SPRING CREEK

#7



#7

AUGUST 3, 2015



#8



#9

AUGUST 3, 2015



#11



#12

AUGUST 3, 2015



#16



#17

AUGUST 3, 2015



#18



#19

AUGUST 3, 2015



#20



#21

AUGUST 3, 2015



#22



#23

AUGUST 3, 2015



#24



#25

AUGUST 3, 2015



#26

AUGUST 3, 2015



#27



#28

Appendix C



RUEN-YEAGER & ASSOCIATES, INC.
ENGINEERS ♦ PLANNERS ♦ SURVEYORS

SIGN-IN SHEET

2015 MS4 ANNUAL TRAINING
Friday, December 4, 2015 8:00-9:00AM

Print Name:	Signature:	Highway District:
John Ankertz		ESH D
Kevin Renner		ESH D
CHAD THOMSON		ESH D
ANDY PARRIS		ESH D
Weldon Shannon		LHD
DAN PETERSON		PFHD
Ed MacI		PFHD
Brian Crumb		PFHD
JOSH LAYTON		PFHD
Brian Paulson		PFHD
Rex Lutes		LHD
Dylan Jensen		LHD
PAT ANNOTTI		LHD
MARK SHAW		LAKE3
Paul Cooper		LHD
Steve Williams		LHD



RUEN-YEAGER & ASSOCIATES, INC.
ENGINEERS ♦ PLANNERS ♦ SURVEYORS

SIGN-IN SHEET

2015 MS4 ANNUAL TRAINING
Friday, December 4, 2015 8:00-9:00AM

Print Name:	Signature:	Highway District:
MIKE HORTON	<i>Mike Horton</i>	LHD
MARU EGGER	<i>maru eggser</i>	LHD
DAVID CARPENTER	<i>David Carpenter</i>	LHD
PETER WESKE	<i>Pete Weska</i>	ESHHD
TIM DAY	<i>Tim Day</i>	ESHHD
SCOTT GLADIST	<i>Scott Gladist</i>	ESHHD
JEREMY HORN	<i>Jeremy A Horn</i>	ESHHD
WILSON BENING	<i>Wilson Bening</i>	ESHHD
BILL McCORKLE	<i>Bill McCorkle</i>	ESHHD
LOREW HORNING	<i>Lorew Horning</i>	ESHHD
MIKE GABOURY	<i>Michael Gaboury</i>	ESHHD.
AARON C SYTH	<i>A C Syth</i>	LHD
TED BALDWIN	<i>Ted Baldwin</i>	LHD
KENNY DOMODAIL	<i>Kenny Domodail</i>	LHD
TRAVIS M. LAY	<i>Travis M. Lay</i>	PFHD
DAVE YERGIN	<i>Dave Yergin</i>	PFHD



RUEN-YEAGER & ASSOCIATES, INC.
ENGINEERS ♦ PLANNERS ♦ SURVEYORS

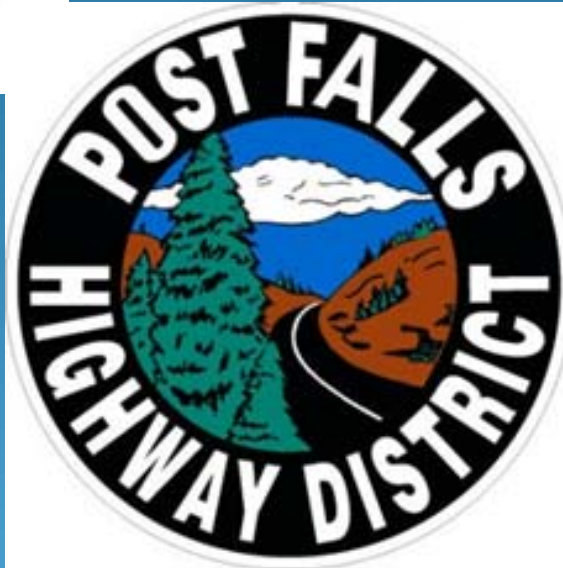
SIGN-IN SHEET

2015 MS4 ANNUAL TRAINING
Friday, December 4, 2015 8:00-9:00AM

Print Name:	Signature:	Highway District:
Eric Probstward	<i>Eric Probstward</i>	PFHD
Mark Roberts	<i>Mark Roberts</i>	PFHD
Larry Howell	<i>Larry Howell</i>	PFHD
Leslie Likes	<i>Leslie Likes</i>	PFHD
Steve Shottel	<i>Steve Shottel</i>	PFHD
Todd Zimmermann	<i>Todd Zimmermann</i>	LHD
Jim Wines	<i>Jim Wines</i>	PFHD
RANDY NEAL	<i>Randy Neal</i>	PFHD
MIKE MONETTE	<i>Mike Monette</i>	PFHD
Kelly Drowsberger	<i>Kelly Drowsberger</i>	PFHD

2015

MS4 Permit Annual Training



Why are we here?

- An MS4 Permit allows Highway Districts to discharge stormwater to waters of the US *with conditions*
- It's required by the District's MS4 permit:
"...the permittee must develop and conduct appropriate training for municipal personnel related to optimum maintenance practices for the protection of water quality. This training must be conducted at least once annually..."



So, This is our Annual Training

- We will talk about what an MS4 Permit is.
- We will go over some Pollution Prevention and Good Housekeeping Practices.



What is a MS4?

A municipal separate storm sewer system (MS4) is:

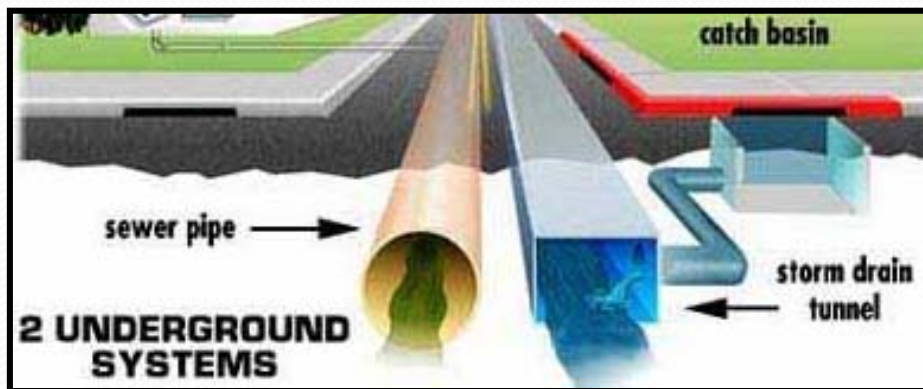
A conveyance or system of conveyances...

owned by a State, city, town, or other public entity, ...

which discharges to waters of the U.S., and is:

- designed or used for collecting or conveying storm water
- not a combined sewer; and
- not part of a Publicly Owned Treatment Works (POTW).

[See: 40 CFR 122.26(b)(4), (b)(7),(b)(8) and (b)(16)]



A MS4 is regulated under NPDES (*needs a permit*) if it meets the definition of a “large-, “medium-, or “small MS4” – and/or, if it is designated by the Permit Authority as needing a permit.

MS4s include Roads with Drainage Systems, Municipal Streets, Catch Basins....



Including curbs, gutters, ditches, manmade channels, or storm drains.....





And what is a MS4 Permit?

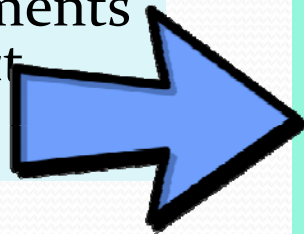
- Issued by the EPA
- Allows MS4's to discharge stormwater to water of the US
- It was developed as a result of the Clean Water Act
- Must be clear, specific, measurable, enforceable

- Helps keep our waters clean

What does a MS4 Permit Require?

All Operators of Regulated MS4s must implement a **Storm Water Management Program (SWMP)** designed to:

- Reduce pollutants to the *maximum extent practicable*;
- Protect water quality; and
- Satisfy the appropriate water quality requirements of the Clean Water Act



The SWMP addresses each of the “Six Minimum Measures:”

- Public Education and Outreach
- Public Participation/Involvement
- Illicit Discharge Detection and Elimination
- Construction Site Runoff Control
- Post-Construction Runoff Control
- Pollution Prevention/Good Housekeeping

So What Are Some Good Pollution Prevention Good Housekeeping Practices?



Snow Removal & Snow Disposal



Snow Removal & Snow Disposal

Use Upland Areas for Storage and Disposal of Snow

Choose flat pervious areas where melting snow can infiltrate

Keep snow storage at least 100 feet away from water bodies, wetlands, and public or private drinking water wells

Remove sediment and debris from dumping areas each spring



Sand and Snow Deicers





Sand and Snow Deicers

- Storage

- Should be covered
- Have a impervious bottom (concrete slab, asphalt parking lot (not a tarp))
- Must be stored away from storm drain inlets and any runoff controlled

- Use

- Calibrate equipment for proper application rate
- Use lowest application rate for effective treatment
- When loading, do not overfill trucks or tanks

- Clean Up

- Sweep loading areas frequently to prevent build-up and run-off
- Sweep the streets in the spring to remove build up
- Wash deicing vehicles in a contained area

Fleet Vehicle Washing and Maintenance



Fleet Vehicle Washing and Maintenance

Washing Fleet Vehicles generates oil, grease, sediment and metals, as well as cleaning solvents into the wash water.



Perform a dry debris removal, collect and dispose as solid waste.

Wash vehicles in a designated area.

Collect wash water if possible.

Use a power washer avoiding detergents.

Proper Material Storage

Maintaining Order in your Shop



The Best Spill Protection is Proper Containment.



Materials Storage

- Store oil, grease, chemicals and other hazardous materials in containers on spill pallets
- Do not stockpile sediment, aggregate, sand, or asphalt near drainage systems
- Store materials in covered areas where possible
- Make sure that storage areas for chemicals and fuels have double containment

Your shop should look like this..



Not This!



Street Maintenance



Street Maintenance

Certain Streets that discharge to receiving waters should have priority in street sweeping and debris removal.

Connected Streets with a higher pollution loading should be prioritized and cleaned more frequently.

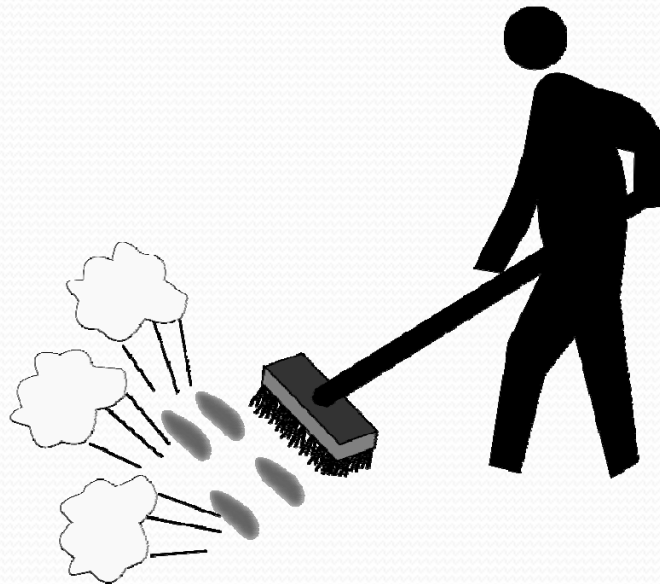


Building and Grounds Maintenance



Building and Grounds Maintenance

- Clean up after yourself
- Keep solid waste in containers away from drainage systems
- Periodic brooming of the maintenance yard



The Bottom Line.....



Is Keeping our Waters Clean!

Any Questions?

Laura Winter, P.E.

lwinter@ruenyeager.com

(208) 292-0820



ENGINEERS ♦ PLANNERS ♦ SURVEYORS